



St. Louis Symphony  
Orchestra

stéphane denève : music director

21 / 22

142nd season

# *Welcoming All Through Music*

Annual Report







Music Director Stéphane Denève and the St. Louis Symphony Orchestra.

2021/2022 St. Louis Symphony Orchestra Board

<b>Officers*</b> Steven L. Finerty <i>Chair</i>  Marie-Hélène Bernard <i>President and CEO</i>  Nancy Galvin <i>Vice Chair</i>  Noémi Neidorff <i>Vice Chair</i>  Kathleen T. Osborn <i>Vice Chair</i>  David Steward <i>Vice Chair</i>  Emily Rauh Pulitzer <i>Secretary</i>  Dr. Donald M. Suggs <i>Assistant Secretary</i>  Lawrence P. Katzenstein <i>General Counsel</i>  John Tvrdik <i>Treasurer</i>  <b>Trustees</b> Bhavani Amirthalingam Dr. Steven Baldwin Cally Banham* Cynthia A. Baxter Barry H. Beracha Elizabeth Mannen Berges Spencer Burke John Doyle Susan Eickhoff Carolyn Graham Farrell James G. Forsyth, III Molly Hyland* Marjorie M. Ivey Dr. Gayle Jackson Dr. Nicholas Kouchoukos Ned O. Lemkemeier* Dr. Kenneth Ludmerer Steve Mackin	Kent McNeil* Jennifer Nitchman Andrew O'Brien Nick Ragone Kate Warne Riggs Stephen M. Savis* Rachel Seward Walter G. Shifrin* Rex A. Sinquefield* Sherry Sissac Thelma E. Steward Peter Van Cleve Susan M. Veidt Phoebe Dent Weil Daniel C. Wessel*  <b>Honorary Trustees</b> C. Robert Farwell* John R. Jordan, Jr. Jo Ann Taylor Kindle Dr. Mabel L. Purkerson Andrew C. Taylor Dr. Virginia V. Weldon  <b>Life Trustees</b> David C. Farrell Carolyn F. Henges Michael F. Neidorff*  <b>Advisory Council</b> Vicki Mayer Altvater Mark B. Andrews Alyson Appleton Maria Briggs Emily Burch William M. Carey Ann Cortinovis Jeffrey T. Demerath Ryan Easley Tim Eby Logan W. Finerty Alice Goodman Miran Halen Harvey A. Harris Jeannette Huey Susan Hutchinson Rush James	Jeff Kaplan Audrey Katcher Linda J. Lee Sally S. Levy* Dr. Frederick C. Lewis, Jr. Laurie Lock Sanford S. Neuman Anney Perrine Dr. David W. Piston Peggy Ritter Bruce D. Ryder Katie Schankman Janice Seele Steve Seele Ray M. Simon Danna Stone Mary Strauss Ann M. Sullins Kit Sundararaman Heather Butler Taylor Anne von der Heydt Laura Vowell Clive Waugh* Lee Wightman Robert L. Williams Jake Winegrad  <b>Symphony Volunteer Association Board</b> Kent McNeil* <i>President</i>  Elizabeth Hahn <i>Secretary</i>  Martha Duchild <i>Vice President, Philanthropy and Stewardship</i>  Debbie Dillon <i>Vice President, Education and Community Programs</i>  Suzanne Seibel <i>Vice President, Membership</i>
--	--	--

2021/2022 Annual Report  
Table of Contents

1	Message from the Music Director
2	Letters from the President & CEO and Board Chair
6	Milestone Moments
8	Music, Experience, and Excellence
12	Honoring Musical Legacies
14	Audience and Community
18	Renovation and Expansion of Powell Hall
20	Institutional Culture and Capacity
26	Financial Summary
28	Honor Roll
39	St. Louis Symphony Orchestra Family

Message from the Music Director

Mes Chers Amis,

It has been quite a year! Being back at Powell Hall and making music for you again with our orchestra and our two choruses reunited in full force was incredible.

**The wonderful musical spirit of our city, which I admired already during our exciting concert in Forest Park, brought our entire SLSO family and our St. Louis community together anew.** Playing large and powerful symphonies by Shostakovich, Vaughan Williams, Mendelssohn, and Beethoven again felt just like a miracle!

Thanks to your generous support, your SLSO was able to offer a remarkable variety of performances in the 2021/2022 season. I am so grateful to the overwhelming talent of our musicians to provide you so many different styles, from early Baroque music to world premieres like Stacy Garrop's *Goddess Triptych*, plus many films, dance collaborations, and choral projects, all performed with a flair, a depth, and a passion, which I treasure deeply. These diverse programs offered an impressive education platform for teachers too!


There are many highlights to this past season, but one I will remember vividly is Amy Kaiser's final concert as Director of the St. Louis Symphony Chorus. Working with a friend like Amy is what makes the SLSO so special. The love she received from her singers, from our orchestra, from the whole community was a testimony to her numerous achievements over a stunning 27 years of service!

I also adored being on the road with our musicians at nearby universities, playing for and teaching many young musicians during fruitful residencies.

Finally, it was a pure joy for me to get to know you more, to meet you at social events or special occasions like the New Year's Eve concert, which was so much fun.

These musical adventures inspired me and sparked many new ideas for future programming... Stay tuned!

On behalf of the SLSO family, it is our great honor to share the power of music with you. Merci, de tout coeur.

Yours,  


Stéphane Denève  
Music Director

\*Executive Committee Member  
\*Deceased



## Letter from the President and CEO

Dear Friends,

We are grateful for your commitment to the St. Louis Symphony Orchestra during the 2021/2022 season, our 142nd continuous year. It was a joy to reconnect through the experience of live symphonic music. Thanks to your support, we served the St. Louis region and beyond through music, connecting with more than 174,000 audience members at 100+ performances.

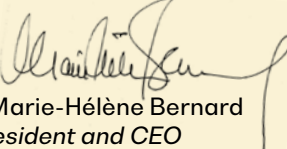
Our talented musicians and teams worked together with a wide range of our region's schools, businesses, social service agencies, and nonprofit organizations, advancing longtime collaborations and forging new partnerships. We welcomed dance to the Emerson Concert Stage with COCA Co-Artistic Director Kirven Douthit-Boyd and local dancers. We continued our ten-year+ broadcast partnership with St. Louis Public Radio, which now includes a simulcast on Classic 107.3FM. We joined Opera Theatre of Saint Louis for our 45th season together and continued partnerships with the International Institute, the Missouri History Museum, Ready Readers, and the Pulitzer Arts Foundation, among others. All of this was done with one goal in mind: **to make music accessible to all.**

Marking 100 years of our education programs reinforced our commitment to make education central to our mission. We provide teachers with the tools they need to ensure our region's preK-12 students receive sequential music education. In the 21/22 season, we expanded our reach, serving 250,000 students and 1,600+ teachers through both in-person programs and digital offerings.

Our mission—enriching lives through music—is made possible thanks to our audiences and donors, as well as the dedication of our extraordinary Board, talented musicians, hardworking staff, dedicated singers from our Symphony Chorus and IN UNISON Chorus, and our Symphony Volunteer Association. Their input was instrumental in shaping a new three-year strategic plan that integrates our first equity, diversity, and inclusion framework, intentionally setting the path to creating greater access to and representation in music today and for future generations. We are poised to enter the next exciting chapter of this remarkable institution as we work towards the renovation and expansion of Powell Hall by 2025.

For the fiscal year ending August 31, 2022, the SLSO remained financially stable despite the impact of the pandemic, reporting a small operating surplus due to federal assistance, strong charitable giving, and thoughtful expense management.

As we reflect on the accomplishments of our 21/22 season and look forward to an exciting future, we are moved and inspired by your continued generosity and active participation. From all of us at your St. Louis Symphony Orchestra, thank you.

  
Marie-Hélène Bernard  
President and CEO

## Letter from the Board Chair

Dear Friends,

This season, we were deeply grateful to have shared music with you. Whether you attended live concerts, watched our digital programs, listed to a radio broadcast, made a financial contribution, or volunteered your time, your engagement has supported our mission and community by enriching lives through the power of music.

Your philanthropic support made this season of music possible, allowing us to continue our work to make music accessible to all. It was a joy to experience a full season of concerts again. While COVID-19 continued to throw curveballs, we were able to host more than 90% of this season's scheduled events, inspiring more than 174,000 concertgoers at live concerts this season.

**I sincerely thank our musicians for their commitment to the SLSO and our community. Their dedication is incredibly meaningful, and we are immensely grateful for all their work.**

I'm honored to work with Marie-Hélène, Stéphane, and the entire SLSO team, and I commend them for their collaborative spirit and accomplishments. They are a remarkable group. Finally, we marked several important moments this year: Chorus Director Amy Kaiser's retirement, 100 years of Education concerts, and the announcement of the Powell Hall expansion and renovation project. I look forward to continuing this work as we plan the future for your St. Louis Symphony Orchestra.

Thank you again.

  
Steve Finerty  
Chair, Board of Trustees



Steve Finerty, Chair, Board of Trustees, Marie-Hélène Bernard, President and CEO, and Music Director Stéphane Denève



**174,633**  
people experienced  
the SLSO live at  
Powell Hall and  
across the region



**450,000+**  
reached through  
weekly radio broadcasts



**9.2 million**  
reached through  
social media and  
digital projects



**200+**  
concerts, free events,  
education programs,  
and video projects  
during the season



**250,000**  
students and 1,607  
teachers at 1,304 schools  
reached by our digital  
education programs



**SLSO education**  
programs reached  
students  
in 48 states and  
17 countries



**20 Video Projects**  
5 Digital Concerts  
8 Meet the Musician Videos  
7 Family and Education Videos  
(SLSO SoundLab, Peter and the  
Wolf, and Tiny Tunes)



**100+ Live Performances**  
including 47 Classical Concerts  
1 SLSO On the Go Performance  
27 Live at Powell Hall Performances  
4 Education and Family Concerts  
10 Holiday Concerts  
7 Pulitzer Series Concerts



**“The SLSO made a festive return to Forest Park with a lively, wide-ranging concert on Art Hill...after a year missed because of the COVID-19 pandemic, the atmosphere was festive, and the music was wonderful.”**

—Fred Blumenthal, *St. Louis Post-Dispatch*





# Milestone Moments of the SLSO's 142nd Season

# 21/22



## Kishi Bashi

Multi-instrumentalist Kishi Bashi opened the season, bringing upbeat indie-pop alongside his reflective *Improvisations on EO9066*, which paired music with archival images from the government-ordered relocation of Japanese Americans to work camps. The concert, presented in partnership with the Japanese American Citizens League, Japanese American Society of St. Louis, Asian-American Chamber of Commerce of St. Louis, and Soldiers Memorial, was made even more poignant by the attendance of survivors from the camps, along with their descendants.



## Education @ 100

The SLSO marked the 100th anniversary of its signature education programs by developing new ways to connect with students and teachers. This season, more than 250,000 students and teachers were impacted by SLSO digital education programs—more than three times the students reached in any previous season. This included students and teachers at 1,300+ schools in 48 states and 17 countries!

## Opera Theatre of Saint Louis

The SLSO joined longtime friends at Opera Theatre of Saint Louis for the 45th year of their partnership, also welcoming OTSL's new Principal Conductor, Daniela Candillari. Two world-premiere operas were produced this season—*Awakenings* and *Harvey Milk*—alongside new interpretations of classics *Carmen* and *The Magic Flute*.

PHOTO CREDIT: Eric Woolsey



## Welcome, NASCAR!

The orchestra, led by Conductor Laureate Leonard Slatkin, performed a special arrangement of the national anthem by Adam Maness with singer and St. Louis native Kennedy Holmes at World Wide Technology Raceway before the region's first NASCAR Cup race. The event hosted a sellout crowd of 57,000 with an estimated TV audience of 4 million.

PHOTO CREDIT: Jack Myer, St. Louis Post-Dispatch/Polaris



## Crafting New Audiences

The SLSO's Crafted concert series returned, including one performance at the University of Missouri-St. Louis' Touhill Performing Arts Center. Audiences enjoyed drink and food samples from local vendors prior to the concert. Stéphane served as host and guide to the hourlong concerts.



## Unique Family Concerts

February education and family concerts featured Sergei Prokofiev's *Peter and the Wolf*, providing an ideal program to partner with the Endangered Wolf Center. The retelling gave more context for how wolves interact with the ecosystem, offering a cross-curricular learning opportunity for children. The Endangered Wolf Center brought its ambassador maned wolf, Lucky, to Powell Hall to surprise audiences at the Family and Education concerts.

The SLSO also produced *Peter and the Wolf* into a digital education concert, offering a unique learning experience for students.



# *Music, Experience, and Excellence*

Sustain and enhance the excellence  
of our music, the concert experience,  
and the SLSO's reputation and brand.



# Music, Experience, and Excellence

For 142 years, the St. Louis Symphony Orchestra has been a treasured cultural institution, an education leader, and musical ambassador for the St. Louis region. During the 2021/2022 season, Stéphane Denève and the SLSO welcomed renowned guest artists and acclaimed composers to Powell Hall. Considered one of America's finest orchestras, the SLSO featured several musicians from within its talented ranks as soloists. The orchestra remains committed to championing music of today, as well as collaborating with local artists throughout St. Louis.



STACY GARROP AND STÉPHANE DENÈVE



## Music of our Time

The SLSO has long been a champion of contemporary music from living composers who represent a wide variety of voices and cultural experiences. In the 21/22 season, Stéphane Denève and the SLSO continued that tradition of advancing the repertoire of the future, performing three world premieres of pieces the SLSO commissioned/co-commissioned, along with 39 pieces by 31 different composers of today.

## Commissions

Premieres in the 21/22 season included Anna Clyne's *PIVOT* (SLSO co-commission and U.S. premiere); Stacy Garrop's *Goddess Triptych* (world premiere); and Jessie Montgomery's *Rounds* (SLSO co-commission), written for pianist Awadagin Pratt, which the *St. Louis Post-Dispatch's* Fred Blumenthal called "powerful."

## Dance

Opening weekend included the first choreographed performance of Anna Clyne's cello concerto, *DANCE*. Inbal Segev, the cellist who commissioned the concerto, performed as the guest soloist. Kirven Douthit-Boyd, COCA Co-Artistic Director of Dance, choreographed the work for area dancers, continuing the SLSO's tradition of collaborations with the region's premiere arts organizations and local artists.

## Live at the Pulitzer

In its 17th season, the *St. Louis Symphony: Live at the Pulitzer* series returned to the Pulitzer Arts Foundation for four sold-out concerts. An intimate experience of contemporary chamber music, the series featured a world premiere of St. Louis native Christopher Stark's *2nd Nature*, an immersive work for solo violin, electronics, and video he created in collaboration with SLSO violinist Shawn Weil and video artist Zlatko Ćosić. The series included the first SLSO performances of 11 works, introducing several composers to St. Louis audiences. "This collaboration stretches musical boundaries with programming that connects listeners to composers of today," said SLSO President and CEO Marie-Hélène Bernard, "and it remains a core part of the SLSO's musical portfolio and commitment to music of our time."

## Composer Workshop with John Adams

This year brought a new collaboration—connecting the SLSO's dedication to music of today and commitment to music education. The SLSO hosted its first annual Composer Workshop, welcoming four composers at the beginning of their careers—Aiyana Braun, Christian Quiñones, Peter Shin, and Nicky Sohn—to St. Louis. The four composers learned from guest conductor and composer John Adams, SLSO musicians, and staff members across the organization. The workshop culminated in a community concert of their works by the SLSO and Assistant Conductor Stephanie Childress.

## Honoring Musician Excellence

Kristin Ahlstrom, Associate Principal Second Violin and Virginia V. Weldon, M.D. Chair, was unanimously selected to receive the Mabel Dorn Reeder Honorary Chair. The chair is awarded every five years to an SLSO musician who demonstrates excellence in artistry and leadership in the orchestra and community. "I'm surrounded by talented, artistic, deserving colleagues," Ahlstrom said, "and I'm deeply honored to receive the award." A St. Louis native, Ahlstrom served as concertmaster of the St. Louis Symphony Youth Orchestra and has been a member of the SLSO for 25 years.

## Guest Artists

Stunning guest artists joined Stéphane and the SLSO throughout the 21/22 season. Renowned pianist Víkingur Ólafsson made his SLSO debut and inspired audiences with his interpretation of Grieg's Piano Concerto. Percussionist Martin Grubinger and conductor Elim Chan brought percussion instruments center stage for incredible performances of Tan Dun's percussion concerto *The Tears of Nature*, commissioned by Grubinger.

Many of the SLSO's own musicians stepped into the soloist's spotlight: Concertmaster David Halen and Principal Harpist Allegra Lilly performed 20th century concertos, while cellist Yin Xiong and violists Beth Guterman Chu and Andrew François collaborated in a concert of Baroque and Classical concertos. Cellist Elizabeth Chung performed as a soloist in Jake Heggie's *The Work at Hand*. A quartet of SLSO musicians—Assistant Principal Second Violin Eva Kozma, cellist Bjorn Ranheim, Principal Oboe Jelena Dirks, and Principal Bassoon Andrew Cuneo—performed as soloists in Haydn's *Sinfonia Concertante*.

Nikolaj Szeps-Znaider spent two weeks with the orchestra as a conductor, solo violinist, and chamber musician. In the spring, pianist Jean-Yves Thibaudet returned for two programs and joined the orchestra on its trip to Midwest universities.

## Live at Powell Hall

Live at Powell Hall concerts showcased midcentury hits to some of today's most inspiring names. Singer-songwriter Ben Folds made his fifth appearance with the orchestra, and compelling tributes to The Beatles, Queen, Pink Floyd, Nina Simone, and Whitney Houston filled the hall.



ELIM CHAN



ALLEGRA LILLY



DAVID HALEN



# Honoring Musical Legacies

One of the things that makes the SLSO special is the long tenure and personal dedication of its musicians. This season, several musicians retired after decades of service.

“We are so very grateful for all that these superb musicians have done for our wonderful orchestra and the St. Louis community through their extraordinary tenures. It has personally been a great joy to share the stage with them, admiring their meaningful and friendly musical dedication, their deeply poetic curiosity, and always well-prepared musicianship, grounded in remarkable personal integrity. They leave precious legacies with our orchestra, and they will serve as an inspiration to all with their commitment to education.” —Stéphane Denève



## Amy Kaiser

The SLSO family celebrated Amy Kaiser in the final season of her distinguished career as the second director in the St. Louis Symphony Chorus' 46-year history. Kaiser prepared the Chorus over the past 27 years for more than 260 concerts, including performances with the SLSO at Carnegie Hall and with the past four Music Directors: Leonard Slatkin, Hans Vonk, David Robertson, and Stéphane Denève.

After making her mark in New York, Amy Kaiser made her musical home in St. Louis as Director of the Chorus in 1995. Throughout her tenure, she took the Chorus to new heights and built a reputation for herself and the Chorus as artistically nimble and powerful. Kaiser strengthened the artistic excellence of the SLSO, inspired hundreds of thousands of musicians and audience members, and created a legacy of exacting musicianship paired with her signature joie de vivre.

“Being Chorus Director is an extremely difficult task,” says Stéphane, “requiring many different talents, but Amy masters all of them brilliantly. I admire her deep musical knowledge, her accurate multilingual pronunciation, her understanding of all the vocal possibilities, and her warm, natural leadership.”



FELICIA FOLAND



BECKY BOYER HALL



HEIDI HARRIS



DANA EDSON MYERS



TIMOTHY MYERS



GERARD PAGANO



WENDY PLANK ROSEN



HIROKO YOSHIDA

**Felicia Foland**, bassoonist, was appointed the SLSO's second bassoonist in 1990. Her history with the SLSO began in 1974 when she was a member of the St. Louis Symphony Youth Orchestra for three years. A fervent music educator, Foland has devoted countless hours to teaching and coaching students to be lifelong orchestral musicians.

**Becky Boyer Hall**, violinist, joined the SLSO in 1993. A St. Louis native, Hall was a member of the Youth Orchestra as a student at Kirkwood High School. Throughout her years with the SLSO, she was a featured musician in many community programs and chamber music performances.

**Heidi Harris**, Associate Concertmaster and Louis D. Beaumont Chair, won her first orchestra job with the St. Louis Symphony Orchestra during her senior year of college at the New England Conservatory. She was a member of the SLSO for more than 20 years. Harris was a featured soloist with the SLSO on several occasions. In 2010, Harris received the inaugural Mabel Dorn Reeder Award at the SLSO, which was created to recognize exceptional leadership and contributions in the community.

**Dana Edson Myers**, violinist and the Justice Joseph H. and Maxine Goldenhersh Chair, joined the SLSO's first violin section in 1980. Over the course of her tenure, Myers appeared with the orchestra as soloist on several occasions. Prior to her time with the SLSO, Myers performed with the Amsterdam Sinfonietta and was a member of The Hague Philharmonic and Ensemble “M.”

**Timothy Myers**, Principal Trombonist and the Mr. and Mrs. William R. Orthwein, Jr. Chair, held the Principal Trombone chair for 39 years. Myers has been a featured soloist on a number of occasions on both trombone and euphonium. Myers is also a founding member of the trombone quartet, Trombones of the St. Louis Symphony, with whom he performs and records. He is also the co-founder of the St. Louis Low Brass Collective, which provides educational and performance opportunities for low brass players in the St. Louis region, especially students and adult amateurs.

**Gerard Pagano**, trombonist, joined the SLSO in 1995. With undergraduate and graduate degrees from The Juilliard School, Pagano performed with the San Francisco Ballet Orchestra for eight seasons, as well as with the San Francisco Symphony, Metropolitan Opera of New York, San Francisco Opera, Tanglewood Fellowship Orchestra, and the Grand Teton Music Festival Orchestra. A dedicated teacher, Pagano has given masterclasses at universities across the country and is a founding member of the St. Louis Low Brass Collective, dedicated to support and promote education and performance for St. Louis area low brass musicians.

**Wendy Plank Rosen**, violinist, has been a member of the SLSO since 1980, after spending three seasons in the Kansas City Philharmonic. Originally from Bay Shore, Long Island, New York, she grew up in a musical family. Rosen has fostered a love and appreciation of classical music through performances and demonstrations across the region through the SLSO's education and community programs. She is certified in the Suzuki training method and has maintained a private violin studio for more than 35 years.

**Hiroko Yoshida**, violinist, was appointed to the SLSO in 1974 and has played under six music directors: Walter Susskind, Jerzy Semkow, Leonard Slatkin, Hans Vonk, David Robertson, and Stéphane Denève. An active chamber musician, she was featured in several SLSO series throughout the years. Yoshida has been teaching for more than 40 years, nurturing the talents of about 20 young violinists each year.



# *Audience and Community*

Celebrate St. Louis and its unique history, talent, and diversity. Make investments to attract, retain, and cultivate new and existing audiences, while elevating the SLSO as a community and education leader.





# Audience and Community

The SLSO connects the community through accessible, engaging, and innovative programming so all guests feel welcome. In the 21/22 season, 35 percent of single-ticket buyers attended an SLSO concert for the first time. The SLSO also collaborates with a variety of organizations from across the region—from universities throughout the Midwest to musicians from the armed forces in Missouri and Illinois, along with houses of worship, schools, social service agencies, nonprofit organizations, and cultural institutions. This musical versatility is designed to better serve the St. Louis community through music.



## St. Louis Area Schools

Education concerts returned to Powell Hall in the 21/22 season, inviting more than 2,600 students to experience the power of live music. SLSO musicians also visited Sumner High School to perform alongside students who told stories through song, dance, drama, and spoken word.

## University Residencies

The SLSO's commitment to music education includes ongoing collaborations with universities, starting with its regular visit to the University of Missouri in October. In March, the SLSO went on a road trip across the Midwest to the University of Nebraska-Lincoln, Indiana University Bloomington, and the University of Illinois Urbana-Champaign. In all, the SLSO performed 3 concerts, gave 24 masterclasses, visited 4 elementary school classes, participated in 4 panel discussions, and joined 2 student orchestra rehearsals. More than 4,000 people were engaged through these programs.



## The Year of the Tiger

For the first time, the SLSO celebrated Lunar New Year with concerts in early February, collaborating with the Asian American Chamber of Commerce St. Louis, OCA-STL, Chinese Education and Cultural Center in St. Louis, and Missouri Asian American Youth Foundation. Conductor Elim Chan's program included Tan Dun's percussion concerto, *The Tears of Nature*, with virtuoso percussionist Martin Grubinger. Concertgoers received traditional red envelopes from volunteers with information about the widely celebrated holiday and a ticket to a future SLSO concert, as well as traditional cookies from Wei Hong Bakery.

## Joining Forces

A week before Memorial Day, regional military musicians joined the SLSO for a concert of patriotic favorites including traditional medleys and a John Philip Sousa march alongside music from Stephen Sondheim and John Williams. IN UNISON Chorus Director Kevin McBeth conducted the combined forces of the 135th Army Band (Springfield, Mo.), 399th Army Band (Fort Leonard Wood, Mo.), and the United States Air Force Band of Mid-America (Scott Air Force Base, Ill.). It was the third Joining Forces concert—and third capacity audience for the free community concert.



## Honoring Juneteenth

The second annual SLSO Juneteenth concert took place at founding IN UNISON partner church Greater Mount Carmel Missionary Baptist. Reverend Earl Nance, Jr. welcomed the audience and reflected on the congregation's tradition of honoring the holiday. SLSO musicians and members of the IN UNISON Chorus performed beloved spirituals and pieces by celebrated Black composer Florence Price. IN UNISON Chorus Director Kevin McBeth and local composer/conductor Terrence Abernathy also shared reflections on the power of music to inspire and connect communities.



## Youth Orchestra

The St. Louis Symphony Youth Orchestra returned to Powell Hall for its 52nd season. YO Music Director Stephanie Childress led three programs, which included standards of the classical repertoire from Pyotr Ilyich Tchaikovsky, Johannes Brahms, a hidden gem from Bernhard Henrik Crusell—which featured YO clarinetist Katie Lee as soloist—and contemporary works from Kaija Saariaho and SLSO Conductor Laureate Leonard Slatkin. Slatkin returned to the Emerson Concert Stage to lead the YO in the world premiere of his piece, *Bachanalia*, commissioned by the SLSO in honor of the YO's 50th anniversary in 2020.



## On Air and Online

The SLSO continued its digital concert offerings with five new releases in the 21/22 season. They included three chamber music concerts performed in the previous season, as well as two full orchestra concerts from the 21/22 season.

New this season, the SLSO's live Saturday night broadcasts were simulcast on Classic 107.3FM in addition to St. Louis Public Radio. Combined, the radio broadcasts reached more than 450,000 listeners in St. Louis and beyond, increasing the SLSO's accessibility beyond the walls of Powell Hall.

## SLSO On the Go

For the first time in recent years, the SLSO performed in St. Charles on two occasions, sharing music with thousands. In December, the orchestra took the popular Mercy Holiday Celebration to Lindenwood University. In June, a string quartet performed a free SLSO On the Go concert at 370 Lakeside Park in partnership with St. Charles City-County Library and the City of St. Peters.



## Peer to Peer

This season's class of Peer to Peer students paired nine young musicians from Gateway Music Outreach with musicians from the Youth Orchestra and SLSO for mentorship and private lessons. The program culminated in an IN UNISON showcase concert at Friendly Temple with 450 people in attendance. "These families were so proud of their kids," SLSO Associate Vice President of Education and Community Partnerships Maureen Byrne said. "For some, it was the first time seeing their kids perform—and they got to share a stage with SLSO musicians!"



# *The Renovation and Expansion of Historic Powell Hall*

The SLSO announced plans to renovate and expand its home at Powell Hall—the first major renovation of the building since becoming the SLSO’s permanent home in 1968. The renovation and 65,000-square-foot expansion—estimated at more than \$100 million—will transform the 1925 building into a vibrant and accessible music center for the St. Louis community. Primary project goals include fostering innovation and greater community connections through the creation of an education and learning center, enhancing the audience and artist experience, and modernizing the venue while preserving its historic character. Work is expected to begin in spring 2023.



**“We will preserve the history of Powell Hall while also creating a hub for community, innovation, and powerful music experiences.”**

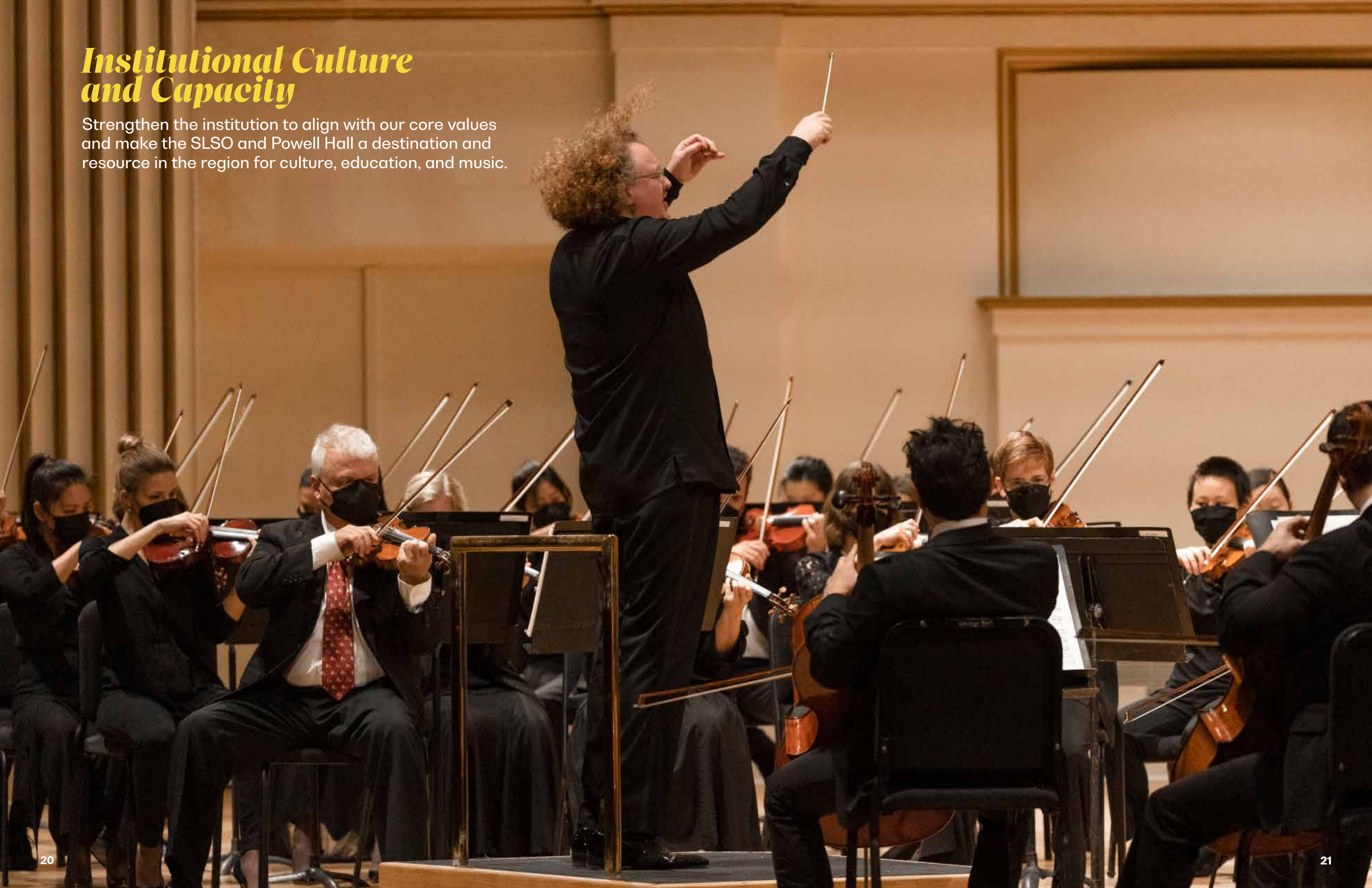
—Marie-Hélène Bernard, President and CEO





# *Institutional Culture and Capacity*

Strengthen the institution to align with our core values and make the SLSO and Powell Hall a destination and resource in the region for culture, education, and music.





# Institutional Culture and Capacity

The new 2022-2025 Strategic Plan, approved by the Board, integrates an Equity, Diversity, and Inclusion (EDI) Framework and lays the foundation for the SLSO's key initiatives: shaping the orchestra of the future, engaging new audiences, extending the culture of philanthropy, and expanding our role as music educator.



## Investing in Education

The SLSO received \$1 million in federal funding to support its music education programs, an appropriation made possible by U.S. Senator Roy Blunt (R-Mo.) and signed by President Joe Biden. The funding comes from the Department of Education's Elementary and Secondary Education Innovation and Improvement Fund, which is part of the federal appropriations bill.

These funds will ensure ongoing access to music education resources for students, teachers, and schools throughout the St. Louis region and across the country. The funding will also help the SLSO expand its digital education platforms—an area of programming which has seen exponential growth and served more than 250,000 students last year.

## SLSO Leadership Team

Julie Gibbs joined the SLSO as Vice President and Chief Philanthropy Officer. Most recently, she served as Vice President of Development at the Jewish Federation of St. Louis.

Unitey Kull joined the SLSO as Vice President of Marketing and Audience Experience after serving as the Director of Marketing, Communications, and Visitor Experience for the Contemporary Art Museum St. Louis (CAM) for 10 years.

Dr. Yolanda Alover joined the SLSO as its first Vice President of External Affairs and Equity, Diversity, and Inclusion. The Board approved the SLSO's EDI Framework and began developing its action plan.



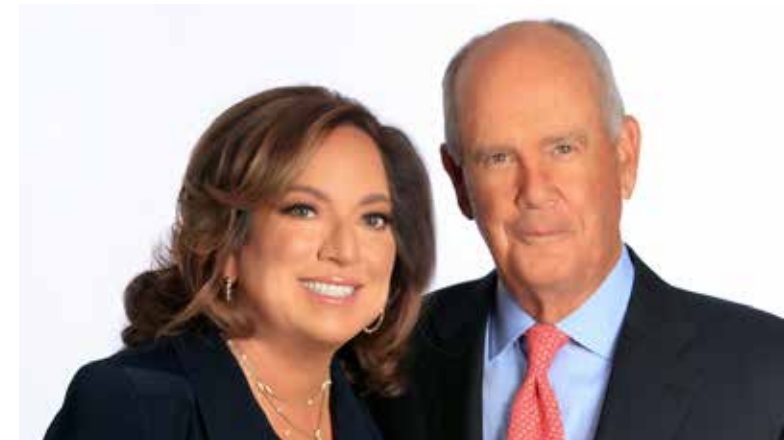
*“In order to be a great city, you have to support a great orchestra.”* —Jim Berges



## Berges Family Challenge

Jim Berges and Elizabeth Mannen Berges, longtime SLSO supporters and champions of the St. Louis region, are inspired by the effect music can have on widening people's worlds. Jim holds that “in order to be a great city, you have to support a great orchestra.” Elizabeth agrees, “It's important people understand the SLSO is a nonprofit institution, with philanthropic gifts providing more than two-thirds of its budget each year. That's why the community's support is so critical.”

Jim and Elizabeth established the Berges Family Challenge, which raised more than \$260,000 for the SLSO's Annual Fund. Approximately half of those donations were new gifts, inspiring more than 525 donors to give.



## Symphony Volunteer Association

The Symphony Volunteer Association continued its meaningful work supporting the SLSO. The volunteers' loyal commitment and enthusiastic support makes programs like Picture the Music, Express the Music, and many others possible.



## Strategic Plan Updates

The Board of Trustees approved the institution's new three-year strategic plan (FY23-FY25), which focuses on key strategic priorities:

### Music, Experience, and Excellence

- Align concert formats and programming with evolving preferences to retain and grow audiences
- Expand SLSO role as educator, especially through digital platforms

### Audience and Community

- Innovate audience engagement to create a greater sense of belonging
- Extend culture of philanthropy with all audiences

### Institutional Culture and Capacity

- Activate and engage the entire SLSO family to support strategic goals
- Successfully complete the Powell Hall project



## Keeping the SLSO Healthy

The SLSO is grateful to Dr. Stephen Liang and the team of medical advisors from Washington University Physicians. Thanks to Dr. Liang, the SLSO's first full, in-person season in two years proceeded safely for audiences, musicians, and partners. While a small number of events were postponed due to community spread, 90 percent of planned Powell Hall events were able to take place.

The SLSO is also grateful to its team of ushers and front of house staff for making the concert experience as smooth as possible for patrons during the 21/22 season.





**“There were so many wonderful moments... that I simply couldn’t make notes on all of them and still revel in the sheer joy of the music.”**

—Chuck Lavazzi, KDHX



# Financial Summary

Operating Results: Fiscal Year 2022

September 1, 2021–August 31, 2022 (\$ in Thousands)\*

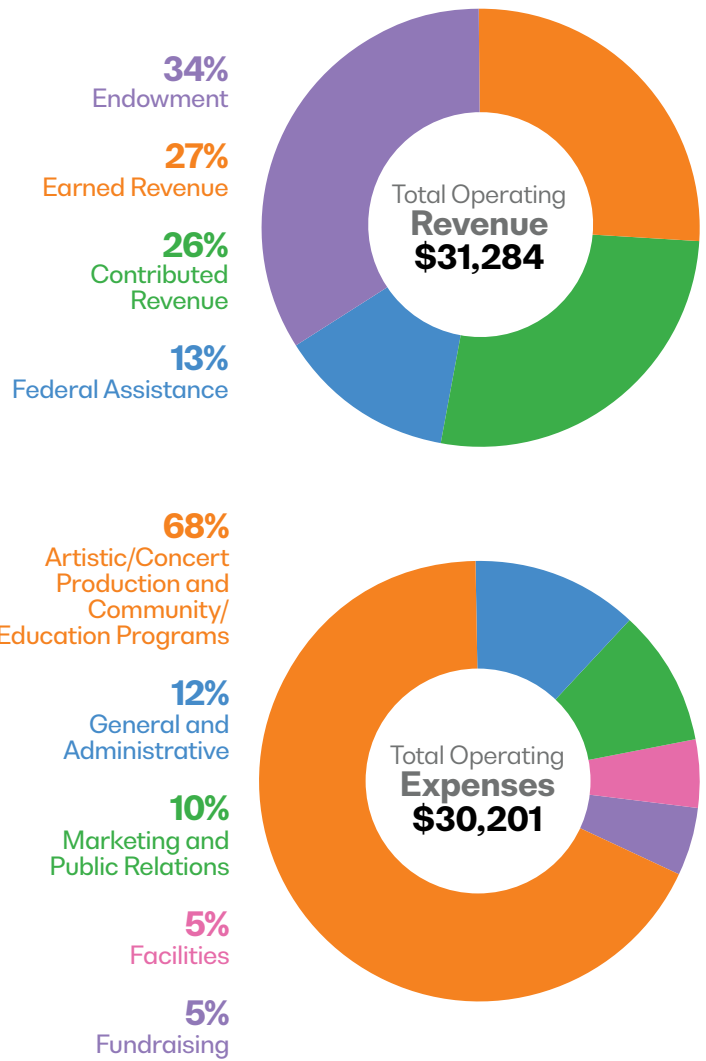
## Revenue

<b>Earned Revenue</b>	
Ticket Revenue	\$ 5,222
Fee and Tour Revenue	1,730
Other Earned Revenue	1,355
<b>Total Earned Revenue</b>	<b>8,307</b>
<b>Contributed Revenue</b>	
Annual Campaign, Events**	
<b>Total Contributed Revenue</b>	<b>8,165</b>
<i>**less Reserve</i>	
<b>Endowment and Federal Assistance</b>	
Endowment Draw	10,612
Federal Assistance	4,200
<b>Total Endowment and Federal Assistance</b>	<b>14,812</b>
<b>Total Operating Revenue</b>	<b>\$31,284</b>

## Expenses

Artistic/Concert Production; Community Partnerships, Education and Youth Orchestra	\$20,496
Marketing and Public Relations	3,080
Fundraising	1,513
Facilities	1,528
General and Administrative	3,584
<b>Total Operating Expenses</b>	<b>\$30,201</b>

*\*Preliminary and unaudited results*



## Statement of Financial Position

August 31, 2022 (\$ in Thousands)\*

<b>ASSETS</b>	
Cash and Cash Equivalents	\$ 23,736
Investments held by the Symphony	40,505
Investments held by the Endowment Trust	239,972
Receivables	40,082
Other Assets	235
Property and Equipment (net)	14,586
<b>Total Assets</b>	<b>359,116</b>
<b>Liabilities and Net Assets</b>	
<b>Liabilities</b>	
Accounts Payable and Accrued Expenses	2,830
Deferred Revenue	2,717
Notes Payable	0
NPV of Annuity Obligations	282
Net Pension Liability	1,156
<b>Total Liabilities</b>	<b>6,985</b>
<b>Net Assets</b>	
Unrestricted	92,853
Temporarily Restricted	81,933
Permanently Restricted	177,345
<b>Total Net Assets</b>	<b>352,131</b>
<b>Total Liabilities and Net Assets</b>	<b>\$359,116</b>

*\*Preliminary and unaudited results*



# Founders Society

The St. Louis Symphony Orchestra gratefully acknowledges the following donors whose lifetime of philanthropic support distinguishes them among the SLSO’s most generous benefactors. Founders Society members are honored for their total cumulative giving as of August 31, 2022.

## \$10,000,000 or more

Arts and Education Council  
Crawford Taylor Foundation  
Des and Mary Ann Lee\*  
Pershing Charitable Trust  
Joseph\* and Emily Rauh Pulitzer  
Regional Arts Commission  
Mr. Jack C. Taylor\*  
Mr. Howard H. Witsma\*

## \$5,000,000 to \$9,999,999

Bayer Fund  
The Danforth Foundation  
Edward Jones  
Emerson  
Enterprise Holdings Foundation  
Margaret Blanke Grigg Foundation  
William T. Kemper Foundation  
Ms. Jo Ann Taylor Kindle  
Missouri Arts Council  
National Endowment for the Arts  
William R. Orthwein, Jr. and Laura Rand  
Orthwein Foundation  
Rex and Jeanne Sinquefield  
Steward Family Foundation and  
World Wide Technology  
Whitaker Foundation  
Anonymous

## \$2,500,000 to \$4,999,999

Ameren Corporation Charitable Trust  
Anheuser-Busch Foundation  
AT&T  
Mr. Francis M. Austin, Jr. and  
Virginia V. Weldon, MD  
Mr. and Mrs. Barry H. Beracha  
The Boeing Company  
Centene Charitable Foundation and  
Mr.\* and Mrs. Michael Neidorff  
The Ford Foundation  
The Honorable and Mrs. Sam Fox  
Carolyn and Jay\* Henges  
The May Department Stores Company  
The Andrew W. Mellon Foundation  
Mabel D. Reeder Foundation-Mabel L.  
Purkerson, Trustee  
The Mary Ranken and Ettie A. Jordan  
Charitable Foundation  
Mr. and Mrs. Andrew C. Taylor  
Wells Fargo Advisors  
Mr. and Mrs. Ben H. Wells\*  
Anonymous

## \$1,000,000 to \$2,499,999

Bank of America  
The Berges Family Foundation  
Gertrude and William A. Bernoudy  
Foundation  
Mr. and Mrs. Jack Bodine  
Caleres, Inc.  
Miss Adelaide Cherbonnier\*  
Marian Bettman Cronheim\*,  
Andrew Bettman\* and Louis Bettman\*  
Mr. and Mrs. Norman L. Eaker  
Mr. and Mrs. Ernest A. Eddy, Jr.\*  
Edison Family Foundation  
Mr. and Mrs.\* David C. Farrell  
Mr. and Mrs. Walter J. Galvin  
Ann and Gordon Getty Foundation  
The Charles Stewart Harding Foundation  
Mirm. and Mrs. Harvard K. Hecker\*  
Interco Charitable Trust  
Lawrence Katzenstein and  
Dr. Cheryl Quinn  
John S. and James L. Knight Foundation  
Robert W. M. Kohlsdorf\*  
Dr. and Mrs. W. R. Konneker\*  
Thomas A. Kooyumjian Family Foundation  
Dr. and Mrs. Nicholas T. Kouchoukos  
Mr.\* and Mrs. Frederick S. Kummer  
Mrs. Clinton W. Lane, Jr.  
Stanley and Lucy Lopata Charitable  
Foundation  
Mr. and Mrs. William Maritz\*  
MetLife Foundation  
Sarah Bryan Miller\*  
Spencer T. and Ann W. Olin Foundation  
Gordon and Susie Philpott  
Mr. and Mrs. David C. Pratt  
Pulitzer Foundation  
Pulley Foundation  
Mr. Robert W. Schaefer\*  
Leon\* and Mary Strauss  
U.S. Bank Foundation  
Anonymous (2)

## \$500,000 to \$999,999

Mr. and Mrs. Mark B. Andrews  
Aon  
Kay and John\* Bachmann  
Mr. J. Thomas Bear, Jr.\*  
Katherine "Kitten" Burg\*  
Audrey E. Claus\*  
Commerce Bancshares, Inc. and  
Commerce Bancshares Foundation  
Edward Chase Garvey Memorial  
Foundation  
GenAmerica Financial Corp.  
Mrs. Solan Gershman\*  
Grand Center, Inc.  
E. Reuben and Gladys Flora Grant  
Charitable Trust  
Mrs. W. L. Hadley Griffin\*

Mr.\* and Mrs. Whitney R. Harris  
Marjorie M. Ivey  
JSM Charitable Trust  
Eugene Kornblum  
Linda and Paul Lee  
Ned\* and Sally Lemkemeier  
Paul and Ann Lux\*  
MacCarthy Foundation  
Mr. and Mrs. Richard J. Mahoney  
Mallinckrodt Pharmaceuticals  
Maritz  
Mercy  
Ms. Maurine M. Milligan\*  
Eric P. & Evelyn E. Newman Foundation  
Andrew and Lori O'Brien  
PNC Financial Services Group, Inc.  
Ralston Purina Trust Fund  
Louis W. Riethmann, Jr. Foundation  
Ms. Aurelia G. Schlapp\*  
Mr.\* and Mrs. Walter G. Shifrin  
Spire, Inc.  
Norman J. Stupp Foundation  
Commerce Bank, Trustee  
Mr. Leif J. Sverdrup\*  
Thompson Coburn LLP  
Mr. and Mrs. H. Edwin Trusheim\*  
Tynewald Foundation  
Mr. and Mrs. Hendrik A. Verfaillie  
Mr.\* and Mrs. Orrin S. Wightman, III  
Edward H. and Rosemary Young Fund  
of the St. Louis Community Foundation  
Anonymous (2)

## \$250,000 to \$499,999

Dr. Grace B. Adams\*  
American Airlines  
Ann and Paul Arenberg\*  
Aronson Charitable Trust  
Suzanne and Dave Baetz  
Ms. Carole E. Bailey\*  
The Louis D. Beaumont Foundation  
Mr. David A. Blanton, III  
BMO Private Bank  
Employees Community Fund of  
Boeing St. Louis  
Mr.\* and Mrs. Laurance L. Browning, Jr.  
Mr. and Mrs.\* Robert H. Duesenberg  
The Dula-Kobusch Charitable Trust  
Cynthia\* and Bill Durham  
Dr. and Mrs. Timothy J. Eberlein  
Mr. and Mrs.\* Richard G. Engelsmann  
Essman Family Charitable Foundation  
Mr.\* and Mrs. C. Robert Farwell  
Mr. and Mrs. Steven L. Finerty  
Ms. Lucille E. Fuetterer\*  
Gateway Foundation  
General Dynamics Corporation  
Mr. and Mrs. William A. Gilbert  
Dr. Anne Carol Goldberg  
Mrs. Maxine Goldenhersh\*

Alice Goodman  
Mr. Stanley J. Goodman\*  
Barbara Grace\*  
Graybar Electric Co.  
Darin B. Groll  
Mr.\* and Mrs. Sidney Grossman, Jr.  
Milton Hieken and Barbara Barenholtz  
Ms. Alice L. Hillebrand\*  
Mrs. Robert R. Imse\*  
Joanne and Joel Iskiwitch  
Jacobs/Sverdrup  
Charles and Catalina Jamieson\*  
Dr. Ann J. Johanson\*  
Mr. and Mrs. John R. Jordan, Jr.  
Mrs. Rosemarie Kirchhoefer\*  
KPMG LLP  
Krispy Kreme  
Laclede Gas Company Employees  
Sally S. Levy\*  
Mr. and Mrs. Charles N. Lorenz\*  
Ms. Susan A. Lovelace\*  
Loren and Ken Ludmerer  
Macy's, Inc. and Macy's Foundation  
Malcolm W. Martin\*  
MasterCard  
The Morton J. May Foundation  
Mr. and Mrs. Sanford N. McDonnell\*  
Mr. and Mrs. Edwin B. Meissner, Jr.\*  
David W. Mesker\*  
Microsoft Corporation  
Isabelle and Jean-Paul Montupet  
Dr. Cora E. Musial  
Phil and Sima Needleman  
George and Melissa Paz  
Peabody Energy  
Jean L. and Charles V. Rainwater, III,  
Charles S. "Tuck" and Erin K.M.  
Rainwater, Eric N. and Sarah  
Rainwater Ward  
Nicholas and Patricia Reding  
Mrs. Lucianna Gladney Ross\*  
Schnuck Markets, Inc.  
The Silk Foundation  
Dr. and Mrs. Richard G. Sisson\*  
Spoehrer Family Charitable Trust est by  
Mr. & Mrs. Hermann F. Spoehrer  
Steinway Piano Gallery  
Ann McFarland Sullins  
Douglas B. Turner, Jr.\*  
Mr. and Mrs. Jan Ver Hagen  
Mr. and Mrs. James von der Heydt  
Eleonore von Kern Nelson\*  
Lila Wallace-Reader's Digest Fund  
Mr. William Warmbold\*  
Mr. Robert L. Williams  
Dr. Richard D. Yoder\*  
Beth Zion Foundation  
Anonymous (5)

## \$100,000 to \$249,000

Accenture  
Mrs. Lynne Adams  
Barbara and Ernest Adelman  
Earle K. Fleischmann\*  
Fleishman-Hillard, Inc.  
Mr. and Mrs. James G. Forsyth, III  
Fox Performing Arts Charitable Foundation  
Maurice Amado Foundation  
Mr. Edward Z. Andalafte\*  
Mary Ellen Anderson  
Arthur and Jeanne Ansehl\*  
Mr.\* and Mrs. Richard L. Aversa  
Mr. and Mrs. Melvin C. Bahle\*  
Bank One  
Diane Barnes\*  
Mr. and Mrs. Gene K. Beare\*  
Ted and Robbie Beaty  
The Bellwether Foundation, Inc.  
Drs. Mary E. Bickel and J. Terry Gates  
Michael Bobroff and Wendy Olk  
Mrs. Lee Bohm\*  
Davalee Bohnenkamp\*  
Ellen E. Bonacorsi and Thomas B. Kinsock  
Michael D. Boone  
Kirsten and Ed\* Boyce  
Richard Brasington, MD and  
Kathleen M. Ferrell  
Stephen F. and Camilla T. Brauer  
Mr. and Mrs.\* John A. Brennan, Jr.  
Thriess and Lynn Britton  
Mr. and Mrs. Robert A. Brad\*  
Anatole\* and Jacqueline Browde  
The Dana Brown Charitable Trust,  
U.S. Bank, Trustee  
Mr.\* and Mrs. Mel F. Brown  
Bryan Cave Leighton Paisner LLP  
Mr.\* and Mrs. Roger W. Bucknell  
Mr. and Mrs. Lester J. Buechele  
Mrs. Gaylord Burke\*  
Mr. and Mrs. Paul R. Cahn  
Mr. William M. Carey  
Mr.\* and Mrs. Don R. Carlson  
Vernice and Paul Cassimatis\*  
Kathleen Clucas  
Mrs. Leonard A. Cohn\*  
Mr. and Mrs. Laurence K. Condie, Sr.  
Karen and Bert\* Condie  
Ellen C. Cooley\*  
Bruce Coppock and Ms. Lucia May  
Dr. and Mrs. William S. Cox\*  
CPI Corporation  
Mr. and Mrs. Lester Crancer, Jr.\*  
The Nolan E. Crane-Joseph & Beatrice  
Rothberg Family Endowment Fund  
Mr. and Mrs. Thomas P. Danis  
Mr. and Mrs. James E. Dearing\*  
John, Barb and Ginna Doyle  
Dr. Pepper/Seven Up, Inc.  
Mr. Frank Driscoll  
Mr. and Mrs.\* Richard W. Duesenberg  
Fred\* and Sara Epstein  
Express Scripts, Inc.  
Mr. and Mrs. Kevin R. Farrell  
Kay Fernandez

Mary Ellen Finch  
LeRoy Fink\*  
Mr. and Mrs. William B. Firestone  
Earle K. Fleischmann\*  
Fleishman-Hillard, Inc.  
Mr. and Mrs. James G. Forsyth, III  
Fox Performing Arts Charitable Foundation  
Nancy Friedland and James Florczak  
Miss Georgia Frontiere\*  
Dave and Agnes Garino  
Mr. and Mrs. David P. Gast  
Clifford Willard Gaylord Foundation  
Mr. and Mrs. Leigh Gerdine\*  
Norman and Susan Gilbert  
Margaret P. Gilleo and Charles J.  
Guenther, Jr.  
Ms. Dorothy E. Goebelt\*  
Paul O. Hagemann\*  
Hammond Associates  
Sanford and Rosalind\* Neuman  
Harvey and Judy Harris  
Harvard & Patricia Hecker Charitable Trust  
Miss Lucille A. B. Heimbürger\*  
Robert O.\* and Anne W. Hetlage  
Mr. and Mrs. Mark Holly  
Cheryl Holman  
Edwin G. Hudspeth\*  
Husch Blackwell LLP  
David and Susan Hutchinson  
Miss Dorothy M. Hyduke\*  
Dr. Gayle P. W. Jackson and Dr.\* Frederick  
T. Kraus  
Mr. Sanford Jaffe\*  
Mr. Herman L. Joachim\*  
Bettie S. Johnson  
Marjorie Eddy Johnson  
Emil and Mary Karches\*  
Henry Katz\* and Dr. Hildegard  
Gruenbaum Katz  
Susan and Stuart Keck  
Mrs. Elmer G. Kiefer  
Mr.\* and Mrs. Thomas M. King  
Mr.\* and Mrs. Charles F. Knight  
Dr.\* and Mrs. William S. Knowles  
Dr. Stuart A. Kornfeld  
Mr. and Mrs. Jack E. Krueger\*  
Mr. and Mrs. Lawrence E. Langsam  
Mr. and Mrs. Kenneth R. Langsdorf  
Mr. and Mrs. Donald E. Lasater\*  
League of American Orchestras  
Mr. Tobias Lewin\*  
Mr.\* and Mrs. Lee M. Liberman  
Mr. and Mrs. Richard A. Liddy  
Mary Lieber  
Drs. Dan and Susan Luedke  
Dr. Carl and Lynn Lyss  
Margaret L. Marin\*  
Mark Twain Bancshares, Inc.  
Mr. Michael Marks  
Phyllis and George Markus  
Claire and Richard Marx  
Patricia L. Mayhew\*  
Dr. and Mrs. John E. Mazuski

Kathryn McCormick\*  
Mr. John McHugh and Ms. Becky Brown  
Colleen McMillan  
John L. Messmore Fund of the St. Louis  
Community Foundation  
Dr. John S.\* and LaVerna E. Meyer  
Renée and Bruce Michelson  
Mr. and Mrs. Michael H. Moisis  
Anna M. Mall  
Mrs. Hubert C. Moog\*  
Mr.\* and Mrs. Vaughan Morrill  
John and Elizabeth Morrison  
Mrs. Barbara Morriss  
Frances C. Murdock\*  
Mr.\* and Mrs. Don Carr Musick  
Gladys H. Myles, The Myles Family  
Charitable Fund of the St. Louis  
Community Foundation  
E. Nakamichi Foundation  
Sanford and Rosalind\* Neuman  
Dr. Melanie Newbill  
Mr. and Mrs. James L. Nours, Jr.  
Francis J. O'Keefe\*  
Mr. and Mrs. Emmanuel C. Paxhia\*  
Dr. David and Marge\* Perkins  
Mrs. Helen R. Persons\*  
Pet Incorporated  
Mr. Thomas Pettigrew\*  
Roy Pfautch  
Dr. Dan Phillips and Dr. Linda S. Horne  
Mary Pillsbury  
Frederick Pitzman Fund  
Ms. Olga R. Plaisance\*  
Norman and Josephine Potashnick\*  
Mr. and Mrs. Paul Putzel  
PwC  
Mr.\* and Mrs. Melvin Rabushka  
Dr. David Riedel and Ms. Margaret  
Donnelly  
Alice G. Rieder\*  
Mr.\* and Mrs. Jerry E. Ritter  
Ritz-Carlton, St. Louis  
Mr. David Robertson and Ms. Orli Shoham  
Mr.\* and Mrs. A. Charles Roland, III  
Ms. Eddie Rosenheim  
Nancy and Don Ross  
Ann R. Ruwitch and John Fox Arnold  
Sachs Fund  
Dr. and Mrs. Fred Sassmanshausen\*  
Steven F. Schankman Family  
Mr.\* and Mrs. Gideon H. Schiller  
Mr. Robert J. Schlueter\*  
Mr. Jon J. Schneeberger\*  
Mrs. William C. Schock  
Dr. and Mrs. Weldon Schott  
Henry and Esther Schweich  
Stephen and Janice Seele  
Dr. and Mrs. Richard C. Shaw  
Mrs. Robert L. Shifrin\*  
Harry M. Siegfried\* and Monica Minkoff  
Siegfried  
Sigma-Aldrich Foundation  
Dr. and Mrs. Thomas M. Siler

Mr. Ray M. Simon  
Linda\* and Stephen W. Skrainka  
Maestro and Mrs. Leonard Slatkin  
Susan Slaughter  
Dr. Raymond G. Slavin  
Dr. and Mrs. Kenneth Smith, Jr.  
Mary E. Smitten\*  
Smurfit-Stone Container Corporation  
Ms. Virginia C. Sodemann\*  
Dr. John Sopuch  
Southwest Bank of St. Louis  
St. Louis Clearing House Association  
University of Health Sciences and  
Pharmacy in St. Louis  
St. Louis County  
Ms. Gladys C. Stamm\*  
Audrey and John Steinfeld\*  
Stifel Financial Corp.  
Mr. and Mrs. V. Raymond Stranghoener  
Alice\* and Warren Stump  
Mr. and Mrs. Warren G. Sullivan  
Surdna Foundation, Inc.  
Ms. Molly Sverdrup\*  
Mrs. Margie Talcoff  
Target Stores  
Paul\* and Patricia Taylor Family  
Foundation  
Ms. Marjorie M. Tooker\*  
Towers Watson  
Pamela M. Triplett and Kenneth B. Denson  
Susan and Peter Tuteur  
UBS Financial Services  
Mr. Benjamin and Dr. Susan Uchitelle  
John and Barbara Uhlemann  
UMB Bank  
Union Pacific Foundation  
United Healthcare of The Midwest, Inc.  
Georgia Van Cleve-Colwell  
Susan Veidt  
Visa Gold Promotion  
Volvo Cars of North America, Inc.  
Maestro Hans\* and Mrs. Jessie Vonk  
Mrs. Beverly Wagner  
Mr. and Mrs. John K. Wallace, Jr.  
Mrs. Martha M. Wallin\*  
Barbara and David Ware  
Washington University  
Washington University Physicians  
Mr. Fred J. Wehrle, Jr.\*  
Ms. Phoebe Dent Weil  
Mrs. Robert C. West\*  
Carolyn L. Whitmore\*  
Mr. and Mrs. Harold L. Wilcke\*  
Mrs. Emily A. Williams  
Eugene F. Williams Sr. Charitable Trust  
Dr. John T. Williams  
Mr.\* and Mrs. Raymond H. Witcoff  
Elizabeth Holloway Woods Foundation  
Dr. Mark Wrighton and Ms. Risa Zwerling  
Mr.\* and Mrs. Isaac E. Young  
Anonymous (9)

\*deceased



# Leadership Circle

The St. Louis Symphony Orchestra gratefully acknowledges the following donors who supported the annual fund at the leadership level last year (contributions through August 31, 2022).

## \$100,000 or more

James G. and Elizabeth Mannen Berges  
Mr.\* and Mrs. Leo Drey  
Mr. and Mrs. Steven L. Finerty  
Ms. Jo Ann Taylor Kindle  
MacCarthy Foundation  
Mr.\* and Mrs. Michael Neidorff  
Emily Rauh Pulitzer  
Rex and Jeanne Sinquefield  
Mr. and Mrs. David L. Steward  
Mr. and Mrs. Andrew C. Taylor  
Anonymous (2)

## \$50,000 to \$99,999

Mr. and Mrs. Barry H. Beracha  
Mr. and Mrs. Jack Bodine  
Nancy Friedland and James Florczak  
Dr. and Mrs. Nicholas T. Kouchoukos  
Anonymous

## \$25,000 to \$49,999

Mr. David A. Blanton, III  
Kathleen Clucas  
Mr. and Mrs. Norman L. Eaker  
Mr. and Mrs. Walter J. Galvin  
Mr. and Mrs. William A. Gilbert  
Margaret P. Gilleo and Charles J. Guenther, Jr.  
Darin B. Groll  
Carolyn and Jay\* Henges  
Marjorie M. Ivey  
Lawrence Katzenstein and Dr. Cheryl Quinn  
Dr. Stuart A. Kornfeld  
Andrew and Lori O'Brien  
George and Melissa Paz  
Penny Pennington and Michael Fidler  
Roy Pfautch  
John H. Summey and Rivi Meltzer  
Mr. and Mrs. Mark C. Throdahl  
Ms. Phoebe Dent Weil  
Mr.\* and Mrs. Orrin S. Wightman, III  
Mr. Robert L. Williams

## Major Gifts Society

### \$10,000 to \$24,999

Barbara and Ernest Adelman  
Mrs. Bhavani Amirthalingam and Dr. Karthik Muthusamy  
The Baldwin Family Fund  
Mr. and Mrs. Warner Baxter  
Ted and Robbie Beaty  
Marie-Hélène Bernard and Douglas Copeland  
Michael Bobroff and Wendy Olk  
Phoebe and Spencer Burke  
Stephen Chicurel-Stein and Lara Rachlin  
Steinel, In memory of John Jeremias Stein and Wanda Theriac  
Mr. and Mrs. William G. Cotner  
Stéphane and Åsa Denève  
John, Barb and Ginna Doyle  
Susan Eickhoff and Family  
Mr. and Mrs.\* Richard G. Engelsmann  
Fred\* and Sara Epstein  
Mr. and Mrs.\* David C. Farrell  
Mr. and Mrs. Kevin R. Farrell  
Mr. and Mrs. Scott Ferguson

Ms. Sue Fischlowitz and Mr. David Roberts  
Mr. and Mrs. James G. Forsyth, III  
The Honorable and Mrs. Sam Fox  
Dave and Agnes Garino  
Jeffrey and Prue Gershman  
Norman and Susan Gilbert  
Dr. Anne Carol Goldberg  
Doug and Vicki Hill  
David and Susan Hutchinson  
Mr. and Mrs. John R. Jordan, Jr.  
Susan and Stuart Keck  
Eugene Kornblum  
Mr. and Mrs. Lawrence E. Langsam  
Sally S. Levy\*  
Mr.\* and Mrs. Lee M. Liberman  
Loren and Ken Ludmerer  
Stephen and Kelly Mackin  
Renée and Bruce Michelson  
Mr. and Mrs. Michael H. Moisio  
Isabelle and Jean-Paul Montupet  
Dr. Cora E. Musial  
Gordon and Susie Philpott  
David and Adrienne Piston  
Mr. and Mrs. Paul Putzel  
Nick and Tyan Ragone  
Lee and Nancy Reycraft  
Mr.\* and Mrs. Robert L. Riggs, Jr.  
Mr.\* and Mrs. Jerry E. Ritter  
Nancy and Don Ross  
Ann R. Ruwitch and John Fox Arnold  
Ms. Bella L. F. Sanevich and Mr. Bradley E. S. Fogel  
Steve and Laura Savis  
Dr. and Mrs. Weldon Schott  
Mr.\* and Mrs. Walter G. Shifrin  
Dr. and Mrs. Thomas M. Siler  
Susan Slaughter, In memory of Joan Fann  
Mary Strauss  
Mr. Benjamin and Dr. Susan Uchitelle  
Andrea and Peter Van Cleve  
Susan Veidt  
Mr. and Mrs. Jan Ver Hagen  
Dan and Sarah Wessel  
Anonymous (3)

### \$5,000 to \$9,999

David and Melanie Alpers  
Nancy D. Barthold, in memory of Carl H. Barthold  
Sam Bertolet and Helen Ziercher  
Mrs. Lee Bohm\*  
Mr. and Mrs.\* John A. Brennan, Jr.  
Cynthia J. Brinkley  
Lee Broughton and Chrissy Taylor  
Broughton  
Mr. William M. Carey  
Mr. and Mrs. Laurence K. Condie, Sr.  
Patrick and Laura Crowley  
Dr. and Mrs.\* Carlos C. Daughaday  
Carl and Frankie Eichenberger  
Drs. Middy Estabrook and George Van Hare  
David and Lelia Farr  
Mr. and Mrs. John H. Ferring, IV  
Mr. and Mrs. David P. Gast  
Drs. J. T. Gates and Mary E. Bickel  
Mr. Leslie Goodman  
Daniel\* and Carol Gravens

Mr. Michael A. Grayson  
Skip and Karen Grossman  
Mrs. William P. Hamilton  
Dr. and Mrs. Jacob J. Harris  
Robert O.\* and Anne W. Hetlage  
Lois E. Himpel  
Alison Kindle Hogan  
Marjorie Eddy Johnson  
Mr. and Mrs. David W. Kemper  
Carolyn Kindle  
Howard Landon  
George Leighton, Jr. and Karen M. Trinkle  
The Reverend Joseph Charles Lindell, Jr.  
Mr. and Mrs. Keith Lissant  
Dr. and Mrs. David Margolis  
Mr. John McHugh and Ms. Becky Brown  
Mercy  
Dr. John S.\* and LaVerna E. Meyer  
Anna M. Moll  
Robert and Melissa\* Mullgardt  
Dr. and Mrs. Philip Needleman  
Sanford and Rosalind\* Neuman  
Dr. Melanie Newbill  
Mr. and Mrs. Gerald Potthoff  
Dr. Mabel L. Purkerson  
Mr.\* and Mrs. Melvin Rabushka  
Dr. David Riedel and Ms. Margaret Donnelly  
Dr. and Mrs. Neal W. Roller  
Lt. Colonel Kathy and Major James Runk  
Sammy and Joseph Ruwitch  
Mrs. William C. Schock  
Stephen and Janice Seele  
Camilla Winship Shapleigh  
Ray Simon and Mel Pashea  
Dr. John Sopuch  
Mark H. Spurrier, M.D. and Karl A. Koesterer  
The Strive Fund  
Dr. Donald Suggs  
Ann McFarland Sullins  
Paul\* and Patricia Taylor Family Foundation  
Susan and Peter Tuteur  
John Tvrdik  
Mr. and Mrs. James von der Heydt  
Mrs. Emily A. Williams  
Jim and Linda Woods  
Libby Yunger  
Anonymous

### \$3,000 to \$4,999

The Alberici Foundation  
Dr. and Mrs. Jorge M. Alegre  
Mr. and Mrs. Roger A. Altvater  
Mr. and Mrs. Kenneth Anderson  
Timothy and Patricia\* Anderson  
Mr. and Mrs. Mark B. Andrews  
Alyson and Jesse Appleton  
Neil\* and Patricia Bean  
Stephen and Sandy Bell  
Pam Belloli and Dave Shimek  
June R. Bierman  
Dr. and Mrs. Clifford A. Birge  
Ellen E. Bonacorsi and Thomas B. Kinsock  
Mr. Samuel D. Brown  
Mr.\* and Mrs. Roger W. Bucknell  
Mr. and Mrs. Paul R. Cahn

Mr.\* and Mrs. Don R. Carlson  
Mr. and Mrs. Charles H. Cobaugh  
Rodney\* and Elaine Coe  
David and Paulina Conner  
Stephen and Ann Cortinovis  
Kevin Counihan and Maryanne Hertel  
Ian and Joanne Cruickshank  
Michael and Susan Darcy  
Dr. Bruce and Michelle Dawson  
Mr. and Mrs. Tyree C. Derrick, Jr.  
Ms. Monty Dixon  
Mr. and Mrs. William J. Eckert  
Elsperman Family  
Homer Ferguson, MD  
Mary Ellen Finch  
Logan and Adela Finerty  
Gordon and Margaret Finley  
Joe and Chris Fleagle  
Alice Goodman  
Bruce and Kathryn Gordon  
David and Jill Grace  
Paula E. and Michael L. Gross  
Mr.\* and Mrs. Gerard K. Gunther, Jr.  
Milton Hieken and Barbara Barenholtz  
Ms. Jeannette R. Huey  
Joanne and Joel Iskiwitch  
Dr. Gayle P. W. Jackson and Dr.\* Frederick T. Kraus  
Dr. Robert and Melissa Jensen  
Bettie S. Johnson  
Mr. Edmund J. Kaczmarski  
Dr.\* and Mrs. William S. Knowles  
Dr. and Mrs. Michael Koebel  
Mr. and Mrs. Kris Kosup  
Nancy and Ken Kranzberg  
Mr. and Mrs. Alex Krupski  
Harriet and Jerrold Lander, in memory of Adaline and Simon Sonenschein  
Frank and Leanne Latuda  
Fred and Nancy Lee  
Linda and Paul Lee  
Karen and Mont Levy  
Dr. and Mrs. Frederick C. Lewis, Jr.  
Lia and Bruce Lowrie  
Drs. Dan and Susan Luedke  
Mr.\* and Mrs. Robert Magnetti  
Grace Mandigo  
Kenneth R. Mares, PhD  
Ben and Petra Maschan  
Dr. and Mrs. John E. Mazuski  
Colleen McMillan  
Amy and Paul Mittelstadt  
Mr. Larry G. Mrazek  
Drs. Jeanne Nerbonne and Andreas Burkhalter  
Kathleen T. Osborn, Regional Business Council  
J. Matthew Pantaleoni  
Cynthia Parker  
Farnell Parsons and Carl Wellman\*  
Lynn and David Phillips  
Philip and Harriet Polster  
Mrs. Harry E. Raybuck, Jr.  
Mrs. Marti Reichman  
Richard and Elizabeth\* Robb  
Jane M. and Bruce P. Robert  
Mr.\* and Mrs. A. Charles Roland, III  
Ms. Eddie Rosenheim

Dr. and Mrs. Mitchell B. Rotman  
Bruce and Linda Ryder  
Mr.\* and Mrs. Gideon H. Schiller  
Mrs. Lucy Schreiber  
Neal and Jayne Schroeder  
Henry and Esther Schweich  
Ms. Linda Seibert  
Mr. and Mrs. Jermal Seward  
Alan and Kim Silverberg, in memory of Deborah Silverberg  
Linda\* and Stephen W. Skrainka  
Dr. Raymond G. Slavin  
Dr. and Mrs. Kenneth Smith, Jr.  
Robert E. Smorodin and Lauren J. B. Shields  
Georgia Streett  
Mr. and Mrs. Warren G. Sullivan  
Mary Susman and Tom Herm  
Mrs. Margie Talcoff  
Pamela M. Triplett and Kenneth B. Denson  
John and Barbara Uhlemann  
Mr. and Mrs. W. R. (Rick) Van Bokkelen  
Laurie and Ray Van de Riet  
Mrs. Beverly Wagner  
Ms. Kimberly Walker  
William E. Wallace and Elizabeth A. Fagan  
Barbara and David Ware  
Phyllis L. Weber  
Mei Chen Welland  
Ellen S. White  
Hillard Williams  
Nancy Williams and Matthew Mancini  
Delores\* and Otto Wirgau  
Dr. and Mrs. Frank Yin  
Mr.\* and Mrs. Isaac E. Young  
Anonymous (5)

### \$1,500 to \$2,999

Mr. Michael Abrams and Dr. Rita Numerof  
Ms. Gwen E. Adams  
Anne Adderton and Peter Dolan  
Mr. S. William Aitken  
Mr. Edwin D. Akers, Jr.\* and Mrs. Teri Steinberg  
Ms. Virginia L. Allen  
Steven M. Arenberg  
Karen and Dean Ayres  
Assimo and Costas Azariadis  
Jack and Anne Bader  
Fran Balk  
Harriet Baron  
Mr. and Mrs. Philip H. Barron  
Drs. Earl and Esther Beeks  
Dr. Allan and Barbara Bennett  
Mr. and Mrs. Richard A. Berger  
Holly and Marc Bernstein  
Marcia M. Bernstein  
Rick and Judy Beumer  
Ms. Patricia Bick  
Mr. and Mrs. Gilbert Bickel  
Drs. Nanci and James Bobrow  
Jane Bolliger and Dr. James Debnam  
Mr. Thomas E. Boothby  
Dr. Kelly Botteron and Dr. Robert C. McKinstry III  
Aaron and Vicki Boutwell  
Ms. Inge Bretherton  
Maria Briggs

Ellen and Dennis Brommelhorst  
Elsbeth Brugger and Gretchen Vander Meulen  
Mark and Carol Burkholder  
James and Diane Butler  
Caleb and Kris Caldwell  
Paul and Louise Cameron  
Arlene Caplan  
Dr. Ralph and Dr. Pamela Caraffa  
Anne Carman  
Mr. John W. Carr and Ms. Kay Kaiser  
Dr. John Chick  
Dennis and Mary Lee Chivetta  
Mr. and Mrs. Jerry Clerc  
Don and Elizabeth Cobin  
Mr. and Mrs. Louis D. Cohen  
William and Lucy Conley  
Mr. and Mrs. Charles J. Cook  
Mr. Joseph E. Corrigan  
Mr. and Mrs. Thomas W. Cummins  
Mr.\* and Mrs. Christopher Davidson  
Frank H. Dayton  
Jeff and Holly Demerath  
Michael and JiaMin Dierberg  
Douglas and Karen Dirks  
Mr. and Mrs. Robert Ducker  
Carolyn R. Duncan  
John and Mary Easley  
Ryan C. Easley  
Mr. and Mrs. John E. Easterling  
Jerry and Michelle Eickel  
Harry and Sue Estill  
Mr. and Mrs. John E. Evans, III  
Sara and Darryl Fabick  
Dr. and Mrs. Anthony E. Fathman  
Mary Ferguson  
Julie Maise Ferrie  
Mr. Alan R. Fiddleman  
Joanne and Bill Fogarty  
Mr. and Mrs. William F. Forsyth  
Mr. Cottrell Fox  
Mr. Gerry E. Frankenfeld  
Dr. Robert H.\* and Lois R. Friedman  
Mr. and Mrs. Robert W. Fulstone, Sr.  
Dr. and Mrs. Edward M. Geltman  
Elaine R. Gernstein  
Julie and Ron Gibbs  
Andy and Nancee Glaser  
Mrs. Joseph F. Gleason  
Susan C. Glenn  
Mr. David Godar  
Brad and Debbie Goss  
Mardell Moeller Granger  
Elizabeth Green  
Elaine and Stuart Greenbaum  
Ronald and Jan Greenberg  
Mr.\* and Mrs. Sidney Grossman, Jr.  
James W. Grubbs  
Dr. Yoram and Yaffa Hahn  
David and Miran Halen  
Harvey and Judy Harris  
Charles and Sue Harrison  
Jack and Kelley Hartnett  
Michael and Katie Haw  
Paul W. Hayman  
Brad and Phyllis Hershey  
Mr. and Mrs. James Hoch  
Cheri Hoffman

Mr. and Mrs. Mark Holly  
Alfred and Marilyn Holtzer  
Robert L. and Cynthia A. Hormell  
Dr. Barbra Horn and Dr. Peter Weiss  
Mr. and Mrs. Michael D. Hurst  
Phyllis Hyken  
Molly Hyland and Curt Ittner  
Susan S. Ittner  
Jen and Gary Jensen  
J. R. Johnson  
Mrs. C. W. Jones  
Mr. Andrew Jorgensen and Mr. Mark Stuart-Smith  
Patrice and Jeffrey Kaplan  
Dr. and Mrs. James Keeney  
Mr. and Mrs. Gary Keesling  
Mr. and Mrs. Mark Keller  
Beverly W. Kinkade and Gary F. Sanders  
Ward and Carol Klein  
Richard and Stephany Kniep  
Mr.\* and Mrs. Newell S. Knight, Jr.  
Roger and Fran Koch  
Mr. and Mrs. Warren Lammert  
Kristin and Rob Lamprecht  
Mr. and Mrs. Kenneth R. Langsdorf  
Ann Larson  
Mr. Terry Lay, in memory of Mr. Jerry Boyer  
Anna and David Leavey  
Dr. Marvin E.\* and Barbara Levin  
Karen T. Levine  
Michael and Lynne Lippmann  
Mr. and Mrs. Donald Loncaric  
John and Marilyn Lonigro  
Mr. Thomas E. Lowther\*  
Debra Lueckerath  
Dr. Carl and Lynn Lyss  
Mr. and Mrs. John N. MacDonough and Mr. Steve MacDonough  
John and Betsy Malinak  
Aaron and Denise Mandel  
Mr. James Mann and Mrs. Janet N. Schoedinger  
Dr. and Mrs. Stanley Margul  
Mr. and Mrs.\* Edward W. Martin  
Sue Matlof  
Dr. Phillip McDaniel and Michael Shirik  
Patrick and Emily McGinnis  
Mrs. Lesley McIntire  
Jane\* and Kent McNeil  
McPheeters & Rickard Family Fund  
Dr.\* and Mrs. Gerald Medoff  
Brenda K. Melson  
Mr.\* and Mrs. John J. Meyer  
Deborah Eldridge Miali  
Mr. Mark D. Mittleman  
Harry and Genie Mueller  
Allen\* and Jeanette Myers  
Dr. and Mrs. John Nash  
David C. Nischwitz  
Mr. and Mrs. James L. Nouss, Jr.  
James and Marcia Nusz  
Dr. Olaronke Akintola-Ogunremi  
Dr. Henry and Marcia Ollinger  
Andrew S. Oster, MD  
Anney Perrine  
Georgia C. Pettus  
Dr. and Mrs. Michael Polinsky  
Mr.\* and Mrs. James T. Poor

Anthony and Stephanie Randall  
Ruth W. Rangel  
Kumar and Carrie Rao  
John and Susan Rava  
The Rayne Fund  
Dr. Nancy Ridenour  
Donald L. and Meg Riechman  
David R. Riley and Ann Campion Riley  
Mr. and Mrs. John R. Robinson  
Steven and Avi Rosenzweig  
John and Tamra Routt  
Thomas and Katherine Ryan  
Kenny and Molly Salky  
Helen Sandifer  
Mr. and Mrs. George B. Saunders  
Alan and Peggy Schaffer  
William and Marjorie Schuchat  
Henry & Sally Schwartz 2010 Family Foundation  
Charles and Suzanne Seibel  
Andrew and Megan Selck  
Suzy Seldin  
Coleman and Lauren Sheehan  
Mrs. Marie Shores  
Mark and Jeanne Showers  
Barbara Shrauner  
Drs. Sherman and Joan Silber  
Sherry Sissac  
Frances and Michael Slusher  
Dr. and Mrs. William S. Sly  
Steve and Kris Sneeringer  
Raymond and Sharyn Steege  
Mr. and Mrs. Daniel Steinmeyer  
Mr. and Mrs. R. Charles Stevens  
Tegner M. Stokes  
Dr. Gregory Storch and Dr. Lisa Ring  
Richard\* and Molly Strassner  
Rev. Mark M. Strothmann and Rev. Sharon K. Maddox  
Thomas and Johanna Sutterfield  
Mr. R. David Taylor  
Mr.\* and Mrs. George W. Thornburgh  
Bernard D. Tischler and Jean Schneider  
Dr. Sherida and Dr. Douglas Tollefsen  
Diana Townsend  
Dr. Gary and Mrs. Phyllis Traub  
Adele and Dennis Tuchler  
Mr. and Mrs. James F. Victor  
Laura Vowell and Sean Blythe  
Mr. Jim Vykopal and Ms. Christy Beckmann  
Ralph and Deborah Wafer  
Dr. Stuart\* and Marlita Weiss  
Drs. B. Craig Weldon and Terri Monk  
Dr. and Mrs. S. William Whitson  
Linda and F. Dale Whitten  
Martin Wice  
Dr. Cheng Wu  
Mr. and Mrs. Douglas H. Yaeger  
Dr. and Mrs. Myles A. Yanta  
Mr. George Yeh  
Ms. Jackie Yoon  
Kathryn Zigler  
Carl and Marjorie\* Zimmerman  
Dr. and Mrs. Peter H. Zimmerman  
Anonymous (14)

\*deceased



# Legacy Circle

The St. Louis Symphony Orchestra gratefully acknowledges the follow donors who have provided for the future of the SLSO through a bequest commitment or a life income gift as of August 31, 2022.

Mr. Michael Abrams and Dr. Rita Numerof  
Gwen E. Adams  
Mr. Francis M. Austin, Jr. and Virginia V. Weldon, MD  
Mr.\* and Mrs. Richard L. Aversa  
Christy Beckmann and Jim Vykopal  
James G. and Catherine B.\* Berges  
Mr. and Mrs. Barry H. Beracha  
Dennis and Judy Berman  
Marie-Hélène Bernard  
Mr. Robert A. Bilzing  
"Mr. David A. Blanton, III"  
Dr. Michael Bleich  
Ida Boehlow  
Jane Bolliger  
Lillian B. Boly  
Richard Brasington, MD and Kathleen M. Ferrell  
Mr. and Mrs. James A. Braun  
Joan T. Briccetti  
Paul A. Brockland  
Anatole\* and Jacqueline Browde  
Bill Burns, in memory of Margaret "Sally" Burns  
Deb and Jerry Callahan  
Mark Cereghino  
Dawn Christoffersen and Jared Minkoff  
Theresa Ciccolella  
Ann M. Corrigan  
Mr. Joseph E. Corrigan  
Mr. John E. Cox  
Dr. and Mrs. James P. Crane  
Thomas J. and Judith A. Crouch  
Ian and Joanne Cruickshank  
Thomas W. and Mary Jo Cummins  
Mr. Timothy Cusick  
Mr. and Mrs. Thomas P. Danis  
Dr. and Mrs.\* Carlos C. Daughaday  
Ms. Diane E. DeBaets  
Ms. Monty Dixon  
Bill and Jane Doub  
Carolyn R. Duncan  
Rita W. and William B.\* Eiseman, Jr.  
Beverly Brooke England  
Sara and Darryl Fabick  
Mr. and Mrs.\* David C. Farrell  
Mr. Alan R. Fiddleman  
Ryan J. Finke and Genevieve T. Knab  
Sam and Marilyn Fox  
Ms. Mary Jane Fredrickson  
Dr. and Mrs. Charles Furfine  
Mr.\* and Mrs. Edmond A. B. Garesche, III  
Mrs. Judith Garfinkel  
Mr. and Mrs. David P. Gast  
Mr. and Mrs. Donald B. Gerber  
Deborah and Gary\* Godwin  
Rabbi Jay B. Goldberg, in loving memory of Erika A. Goldberg  
Mardell Moeller Granger  
Elizabeth A. Greer  
Edith Grunwald  
Irene and Bob Gulovsen, in memory of William and Beatrice Feldhus  
Mr. Larry J. Gwin

David E. Hall, in joyful memory of Ricky R. Hall  
Mr. and Mrs.\* Edward A. Hamlin  
Mr.\* and Mrs. Robert L. Harmon  
Mr.\* and Mrs. Whitney R. Harris  
Charles Hasenjaeger  
Mr. Tom Hatchard  
Michael E. and Sherry L. Hazel  
Shirley A. Heiman  
Robert G. Heinritz Jr., JD\* and Linda Heinritz  
Carolyn and Jay\* Henges  
Christine Henry  
Mr. and Mrs. Paul O. Herrmann, III  
Milton Hieken and Barbara Barenholtz  
Lois E. Himpel  
Gayla and Arthur Hoffman  
Ann E. Howard  
Ms. Jeannette R. Huey  
Jim\* and Genya Human  
Diane M. Hurwitz  
Susan C. Hutchinson  
Marjorie M. Ivey  
Gayle P. W. Jackson  
Dr. Robert and Melissa Jensen  
Marjorie Eddy Johnson  
Patricia J. Johnson  
Amy Kaiser  
Susan and Stuart Keck  
Jonathon and Linda Killmer  
Beverly W. Kinkade and Gary F. Sanders  
Mr. Richard Kusnierz and Ms. Kathryn A. Rapp  
Mr. Lawrence E. and Mrs. Hannah S. Langsam  
Sharon and Byron\* Lapin  
Kent A. Lewis  
Lynda L. Lieberman  
Mr. Joseph C. Lindell, Jr.  
Dr. and Mrs. David Lovell  
Dave Lucas  
Rita Luddon  
Kenneth R. Mares, PhD  
Dr. Phillip McDaniel and Mr. W. Michael Shirk  
Mr. Michael McGrath  
Dr.\* and Mrs. Joseph McKinney  
Dr.\* and Mrs. Gerald Medoff  
Mrs. Mary M. Meredith  
James J.\* and Dina L. Michael  
Joseph A. Miller  
Mr. Mark D. Mittleman  
Joan and Kenneth\* Musbach  
Dr. Cora E. Musial  
David C. Nischwitz  
John J. Oleski  
Mr. Michael J. Opitz and Mr. Donald P. White  
Michael C. and Susan R.\* Orlando  
Mary E. Ozee\* and Linda O. Lewis  
Dr. Robert C. Packman  
Dorothy J. Palisch  
Mrs. Mary E. Pearson  
Dr. David and Marge\* Perkins

L. Susan Pletscher  
Dr. Anne E. Price  
Dr. Mabel L. Purkerson  
Eric N. and Sarah Rainwater Ward  
Mrs. Harry E. Raybuck, Jr.  
Mr.\* and Mrs. Robert L. Riggs, Jr.  
Thomas R. Robertsen and Wiley E. Martin  
Larry and Jo Ross  
T. Marshall Rousseau  
Dr. Mary Anne Rudloff  
Lt. Colonel Kathy and Major James Runk  
Mr. Michael E. Russo  
William C. Rynecki  
Steven F. Schankman Family  
Mr.\* and Mrs. William D. Schneck  
Al and Betty Schneider  
Mrs. Ben Schneiderman  
Cliff Schoep  
Mrs. Lucy Schreiber  
Janet Schulz\* and Robert L. Openlander  
Biane M. Hurwitz  
Susan C. Hutchinson  
Marjorie M. Ivey  
Gayle P. W. Jackson  
Dr. Robert and Melissa Jensen  
Marjorie Eddy Johnson  
Patricia J. Johnson  
Amy Kaiser  
Susan and Stuart Keck  
Jonathon and Linda Killmer  
Beverly W. Kinkade and Gary F. Sanders  
Mr. Richard Kusnierz, M.D. and Karl A. Koesterer  
Bill and Karen Stebelski  
Teri Steinberg  
Mr. and Mrs. R. Charles Stevens  
Mrs. Ann Still  
Mary Strauss  
Rev. Mark M. Strothmann and Rev. Sharon K. Maddox  
Ann McFarland Sullins  
Ms. Margaret Taylor  
Bob Thompson  
Mrs. Julia Triplett  
Pamela M. Triplett and Kenneth B. Denson  
Russ and Barb Vanderbeek  
Mr. and Mrs. Jan Ver Hagen  
Lesley Ann Waldheim  
Thomas C. and Joyce M. Walsh  
J.R. and Mia Walters  
Dave and Bea\* Waugh  
Ms. Phoebe Dent Weil  
Mr. and Mrs. Joseph Weir  
Mr. and Mrs. Earl Wendt  
Gary John Werner  
Mr. Dale Whiteside  
Linda and F. Dale Whitten  
Mr. and Mrs.\* Michael A. Wick  
Mr. and Mrs.\* James E. Wilson  
Dr. and Mrs.\* Patrick R. Wilson  
Sarah V. and Kendall M. Winter  
Mrs. Marilyn J. Woerner  
Edward H. and Rosemary Young Fund  
Libby Yunger  
Anonymous (17)

*In memory of Legacy Circle members:*  
Dr. Grace B. Adams  
Mr. Stephen Adams  
Ms. Gladys H. Aguado  
Ms. Dorothea H. Allen  
Mr. Edward Z. Andalaft  
Mr. and Mrs. Frederick S. Anheuser  
Arthur and Jeanne Ansehl  
Ann and Paul Arenberg  
Mrs. Margaret M. Arnold  
Mr. Maurice D. Artstein  
Mr. Richard Ashburner  
Miss T. C. Atherton  
Ms. Marilyn A. Bacon Scott  
Mr. and Mrs. Melvin C. Bahle  
Ms. Carole E. Bailey  
Mrs. Gordon Bamesberger  
Mrs. Constance Baur  
Mr. J. Thomas Bear, Jr.  
Mr. and Mrs. Gene K. Beare  
Ruth and Eugene\* Schwartz  
Deborah and Edward Schwarz  
Ray Simon and Mel Pashea  
Linda\* and Stephen W. Skrainka  
Dr. Raymond G. Slavin  
Frances and Michael Slusher  
Dr. and Mrs. Kenneth Smith, Jr.  
Lee and Carl Smith  
Mr. and Mrs. Todd S. Snyder  
Nancy and John Solodar  
Marie F. Speciale  
Mark H. Spurrier, M.D. and Karl A. Koesterer  
Bill and Karen Stebelski  
Teri Steinberg  
Mr. and Mrs. R. Charles Stevens  
Mrs. Ann Still  
Mary Strauss  
Rev. Mark M. Strothmann and Rev. Sharon K. Maddox  
Ann McFarland Sullins  
Ms. Margaret Taylor  
Bob Thompson  
Mrs. Julia Triplett  
Pamela M. Triplett and Kenneth B. Denson  
Russ and Barb Vanderbeek  
Mr. and Mrs. Jan Ver Hagen  
Lesley Ann Waldheim  
Thomas C. and Joyce M. Walsh  
J.R. and Mia Walters  
Dave and Bea\* Waugh  
Ms. Phoebe Dent Weil  
Mr. and Mrs. Joseph Weir  
Mr. and Mrs. Earl Wendt  
Gary John Werner  
Mr. Dale Whiteside  
Linda and F. Dale Whitten  
Mr. and Mrs.\* Michael A. Wick  
Mr. and Mrs.\* James E. Wilson  
Dr. and Mrs.\* Patrick R. Wilson  
Sarah V. and Kendall M. Winter  
Mrs. Marilyn J. Woerner  
Edward H. and Rosemary Young Fund  
Libby Yunger  
Anonymous (17)

Mr. Joseph T. Finnigan  
Mr. Vernon W. Fischer  
Laura Brock Fisher and Robert Lee Fisher  
Earle K. Fleischmann  
Mr. Alfred Fleishman  
Dr. Norma Fletcher  
Hal and Doris Flowers  
Ms. Lucille E. Fuetterer  
Mr. and Mrs. John R. Galloway  
Mr. Gilbert Getz  
Ms. Emma M. Giger  
Mrs. Marjorie R. Glass  
Ms. Dorothy E. Goebelt  
Esther Goff  
Mrs. Maxine Goldenhersh  
Mr. Samuel R. Goldstein  
Mrs. Sam I. Golman  
Miss Helene Gonska  
Mr. Stanley J. Goodman  
Barbara Grace  
Mrs. W. L. Hadley Griffin  
Margaret Blanke Grigg Foundation  
Mr. Eugene E. Guttin  
Paul O. Hagemann  
Orvid G. Halane Trust  
Ms. Catherine A. Haley  
Mr. Charles P. Hamill  
William C. and Audrey K. Hammann  
Mr. John M. Harney  
Jane Freund Harris  
Dr. Slayden Hunt Harris  
Mr. and Mrs. Harvard K. Hecker  
Miss Lucille A. B. Heimbürger  
Ms. Juanita G. Helmich  
Mr. William G. Hengehold  
Mr. and Mrs. Ralph A. Herzmark  
Ms. Phyllis Heyssel  
Ms. Alice L. Hillebrand  
Mr. Miles A. Hinton  
Mr. William M. Hissey  
Mr. Robert F. Hites  
Mr. and Mrs. Arthur K. Howell, Jr.  
Edwin G. Hudspeth  
Miss Dorothy M. Hyduke  
Mr. and Mrs. Robert F. Hyland  
George H. Hyram  
Mrs. Robert R. Imse  
Mr. Sanford Jaffe  
Mrs. T. Frank James, Jr.  
Charles and Catalina Jamieson  
Veljko Jellech  
Mr. Herman L. Joachim  
Ms. Mildred Joeckel  
Dr. Ann J. Johanson

Ms. Carolin Johnson  
Lillian Todd Juenger  
Rosemarie Kalicak  
Emil and Mary Karches  
Ms. Mary L. Kilmer  
Mary Janet Kinsella  
Mrs. Rosemarie Kirchhoefer  
Engelbert and Barbara Knaus  
Robert W. M. Kohlsdorf  
Dr. and Mrs. W. R. Konneker  
Mrs. Beatrice Kornblum  
Mr. Michael S. Kramer  
Mr. and Mrs. Jack E. Krueger  
Mrs. Mary Lais  
Mary and Oliver Langenberg  
Barbara L. Lanman  
Margaret S. Lanman  
Ms. Amy K. Lears  
Mr. and Mrs. E. Desmond Lee  
Ms. Mary J. Lee  
Robert and Marilyn Leinberger  
Ms. Nehoma Lerner  
Mr. and Mrs. L. Max Lippman, Jr.  
Ms. Estelle A. Loeb  
Lucy Lapata  
Mrs. Charles W. Lorenz  
Ms. Susan A. Lovelace  
Paul and Ann Lux  
Mrs. Frank Mader  
Ms. Jane Mahon  
Helen A. Mardorf  
Ms. Carola Margraf  
Margaret L. Marin  
Malcolm W. Martin  
Ms. Mildred L. Mattes  
Patricia L. Mayhew  
Mr. Enos McClure  
Kathryn McCormick  
Lorette E. Medart  
Mr. and Mrs. Edwin Meissner, Jr.  
Mr. and Mrs. Arthur C. Meyers, Jr.  
Mr. and Mrs. Jefferson L. Miller  
Sarah Bryan Miller  
Mrs. William Scott Miller  
Ms. Maurine M. Miligan  
Shirley A. Mittleman  
Mr. Alfred F. Moeller, Jr.  
Ms. Gertrude K. Mueller  
Ms. Loretto Mullen  
Frances C. Murdock  
Mrs. Gladys H. Myles  
Mrs. Norma Nelson  
Mr. John F. Norwood  
Richard L. O'Bosky

Mrs. Roland O'Bryen  
Francis J. O'Keefe  
Mrs. Henry E. Oppenheimer  
Mrs. Jules B. Orabka  
John R. Overall  
Ms. Margaret Pape  
Mrs. Helen R. Persons  
Mr. Thomas Pettigrew  
Stella Cartwright Pettus  
Ms. Eileen Pfeifer  
Ms. Olga R. Plaisance  
Frank J. Pollnow, Jr.  
Mr. and Mrs. Philip B. Polster  
Norman and Josephine Potashnick  
Mr. and Mrs. Ed Preston  
Margot Prinz  
Genevieve Radermacher  
Mr. Richard A. Radtke  
Mr. Joseph V. Ragni  
Jean L. and Charles V. Rainwater, III  
Jane Crow Dillmann Reddy  
Mr. and Mrs. Sigmund M. Redelsheimer  
Elizabeth R. Reinhardt  
Mrs. Betty J. Richardson  
Alice G. Rieder  
Mr. and Mrs. Samuel Rosenbloom  
Carol Anita Sagner  
Mr. Fred M. Saigh  
Ms. Margaret Salomon  
Mr. Randall Sanger  
Mrs. Virginia Sassmanshausen  
Mr. Robert W. Schaefer  
Dr. Samuel E. Schechter  
Ms. Aurelia G. Schlapp  
Ms. Dorothy Schlensker  
Mr. Robert J. Schlueter  
Mr. Jon J. Schneeberger  
Ms. Elizabeth Schneithorst  
Victor and Mitzie Schroeder  
Catherine H. Schumann  
Ms. Melba S. Seay  
Ms. Carol Seligman  
Pearl M. Seymour  
Mr. Norman J. Shapiro  
Ms. Catherine Shelton  
Mr. and Mrs. Thomas W. Shields  
Mr. and Mrs. Edwin Simon  
Dr. and Mrs. Richard G. Sisson  
Mrs. Geraldine Epp Smith  
Ms. Margaret Smith  
Mrs. Robert F. Smith  
Mary E. Smitten  
Ms. Virginia C. Sodemann  
Richard and Irene Sokol

Ellen W. Spitz  
Ms. Gladys C. Stamm  
Audrey and John Steinfeld  
Mr. Wesley Quayle Stelzriede  
Mrs. Lorayn P. Strauss  
Ms. Elvera Stuckenberg  
Mr. and Mrs. Richard S. Summers  
Ms. Molly Sverdrup  
Daniel Talonn  
Yolanda N. Taylor  
Evelyn Terrall  
Ms. Julia W. Terry  
Ms. Phyllis Tirnenstein  
Ms. Marjorie M. Tooker  
Mrs. Grace M. Tripp  
Ms. Frances P. Troemel  
Mr. and Mrs. H. Edwin Trusheim  
Margaret Tumiati  
Douglas B. Turner, Jr.  
Dr. H. P. Venable  
Ms. Florence S. Voelker  
Eleonore von Kern Nelson  
Mr. Ervin Walker  
Mrs. Hoyt R. Wallace  
Mrs. Martha M. Wallin  
Mr. William Warmbold  
Reverend R. Donald Weaver  
Miss Grace Weber  
Mr. Fred J. Wehrle, Jr.  
Mrs. Michael Weigert  
Mr. and Mrs. Robert S. Weinstock  
Mr. and Mrs. Ben H. Wells  
Ms. Mary Elizabeth Wesley  
Mr. Louis Westheimer  
Mrs. Doris B. Wheeler  
Carolyn L. Whitmore  
David G. Wiegert  
Mrs. Homer C. Wieser  
Mrs. Harold L. Wilcke  
Donna Wilkinson  
Patricia Williamson  
Elizabeth E. Wilson  
Harry B. Wilson  
Mr. Louis P. Wingert, Jr.  
Mr. Howard H. Witsma  
Ms. Alice Wittkopf  
Edmund Woodbury  
Ms. Marion C. Wyers  
Dr. Richard D. Yoder  
Beth Zion Foundation  
Mr. and Mrs. William A. Zukoski  
Anonymous (17)







Tribute Gifts—In Memory Of *cont.*

Ms. Martha McClees  
Mercy  
Ms. Katherine Planas  
Darlene B. Roland  
Mr. and Mrs. Jack Schuster  
Mr. and Mrs. Andrew C. Taylor  
Dr. Gary and Mrs. Phyllis Traub  
Mr. William L. Trubeck  
Ms. Karen Vangyia

**Michael Neidorff's love of the arts**  
Fondly, Regions Bank

**Barbara Ottolini**  
Dr. and Mrs. Kenneth Smith, Jr.

**Donald Parks**  
Mr. and Mrs. John G. Kakouris

**John Phillipe**  
Dr. and Mrs. Nicholas T. Kouchoukos

**Sheila Reddick**  
Ms. Margaret Lahrmann

**Jerry E. Ritter**  
Mr. and Mrs. Steven L. Finerty

**Nancy Rubenstein**  
Dr. Vicki L. Sauter

**Rudy**  
Dr. Daniel S. Zahm and  
Ms. Stefanie Geisler

**Mary Kay Shehan**  
Ms. Judith A. Fox

**John Sheridan**  
Ms. Eileen Traughber

**Walter G. Shifrin**  
Ms. Isabel Ackerman  
Mrs. Harriette S. Arkin  
Mr. and Mrs. Stephen Arnstein  
Harriet Baron  
Mr. and Mrs. Barry H. Beracha  
Deborah Bloom and Christopher Carson  
Mr. and Mrs. Ivan Blumoff  
Drs. Nanci and James Bobrow  
Ben and Radine Borowsky  
Mr. and Mrs. Arthur A. Bourey  
Mrs. Barbara Boxer  
Ms. Judy Breitenbach

Mr. and Mrs. James Bruchas  
Mrs. Kathryn A. Cohen  
Mr. and Mrs. Louis D. Cohen  
Mr. and Mrs. Peter A. Cohen  
Mr. and Mrs. Charles J. Cook  
Mrs. Margaret Crane  
Ellen and Henry Dubinsky  
Mr. William Dubinsky  
Mr. and Mrs. Stanley Edelstein  
Sara Epstein  
David C. Farrell  
Mr. Kenneth Fenton  
Mr. Alan R. Fiddleman  
Mr. and Mrs. Steven L. Finerty  
Ms. Suzanne Fischer  
Mr. and Mrs. Burton E. Follman  
Roxanne Frank  
Mr. Michael H. Freund  
Lois R. Friedman  
Mr. and Mrs. Herbert Gittelman  
Ms. Lisa Goebel  
Mr. Kenneth A. Goldberg  
Mr. Milton Goldenberg  
Judy and Al Goldman  
Alice Goodman  
Mrs. Debbie Greenberg  
Harvey and Judy Harris  
Carolyn F. Henges  
Ms. Anne W. Hetlage  
Mr. and Mrs. Ervin L. Heyde Jr  
Mrs. M. Myron Hochman  
Mrs. Suzanne Hoffman  
Mr. and Mrs. Dale Huff  
Joanne and Joel Iskiwitch  
Marjorie M. Ivey  
Mr. and Mrs. Richard Jente  
Amy Kaiser  
Mrs. Nancy F. Kalishman  
Patrice and Jeffrey Kaplan  
Mrs. Sandy Kaplan  
Mr. and Mrs. Aron S. Katzman  
Mr. Brian Kearns  
Ms. Ellen Kearns  
Mr. and Mrs. Robert Kleinlehrer  
Ms. Susan D. Knopf and Mr. Richard  
Levey  
Ms. Valarie Kornblet Goldstein  
Eugene Kornblum  
Mr. Daniel Kweskin and Mrs. Gloria  
Ezekiel Kweskin

Mr. Jonathan Lauren and Mrs. Cathy  
Hochman Lauren  
Mrs. Heidi Leeds  
Judith W. Levy  
Mrs. Carol B. Loeb  
Phyllis and George Markus  
Mr. John McHugh and Ms. Becky Brown  
Brenda K. Melson  
Mr. and Mrs. Paul I. Miller  
Mr. and Mrs. David Milton  
Mr. Larry G. Mrazek  
Dr. Cora E. Musial  
Noëmi Neidorff  
Mr. and Mrs. Gary Oско  
John Perrotta and Jacqueline Perrotta  
Emily Rauh Pulitzer  
Mr. and Mrs. Paul Putzel  
Ms. Patricia Rich  
Mr. and Ms. Steve Roche  
Ann R. Ruwitch and John Fox Arnold  
Kenny and Molly Salky  
Bernard Tischler and Jean Schneider  
Mr. Avery Seidel  
Ms. Audrey Shanfeld  
Dr. and Mrs. Kenneth Smith, Jr.  
Dr. and Mrs. Gene W. Spector  
Ann McFarland Sullins  
Mr. and Mrs. E. R. Thomas, Jr.  
Ms. Christina Traber  
Dr. Gary and Mrs. Phyllis Traub  
Mr. and Mrs. Hillard Ullman  
Susan Veidt  
Ms. Ruth Wall  
Ms. Lucie Watel  
Ms. Deborah Weedman  
Ellen S. White  
Ms. Christine Whitehead  
Mr. and Mrs. Craig Wielansky  
Susan and Alan Witte

**Detective Sarah E. Smith**  
Mr. Robert Ciralsky

**Dorothy W. Smith**  
Mr. and Mrs. Frank Akers  
Mr. and Mrs. Michael Jordan

**Elizabeth St. Clair**  
Mrs. Donna S. Brookman  
Dr. Lloyd Klinedinst Jr and Ms. Barbara  
Bollmann

Ms. Janina Malone  
Mr. and Mrs. Hugh A. McGaughy  
Mr. and Mrs. Maynard V. Olson

**Jean Catherine Steffen**  
Mr. and Mrs. Dan Frey

**Betty Steinbach**  
Loren and Ken Ludmerer

**Sheldon K. Stock**  
Mr. and Mrs. Spencer Garland  
Mr. and Mrs. Edward Goldenhersh  
Greensfelder Hemker & Gale P.C.  
Carol M. James  
Margaret M. Liggett  
Judge and Mrs. Stephen N. Limbaugh, Jr.  
Mr. and Mrs. Don P. Moschenross  
Mr. and Mrs. Timothy Thornton  
Mr. Harold A. Tzinberg  
Mr. and Mrs. Leonard Vines

**Takaaki Sugitani**  
Deborah Bloom and Christopher Carson  
Frances Tietov and Elliot Elson

**Nancy S. Summers**  
Harvard Business School  
McKnight Place Assisted Living &  
Memory Care  
Mr. and Mrs. Stephen J. Saller  
Mr. William Thompson  
Richard and Elizabeth Zempel

**Mrs. Swamy**  
Ms. Mary Jones

**Drew Thompson**  
S. J. Braddock  
Kati M. Guerra and Felicia A. Foland

**Ted Vogel**  
Ms. Ilene Knobler

**Wilma L. Wilson**  
Ms. Carol Wilson

**Sidney Wolf**  
Mr. David R. Truman

*\*deceased*

Institutional Partners

The St. Louis Symphony Orchestra extends its deep appreciation to the following corporations, foundations, and public agencies for their outstanding philanthropic and sponsorship support of the SLSO through August 31, 2022.

\$100,000 and above



MARGARET BLANKE GRIGG FOUNDATION | THE THOMAS A. KOOYUMJIAN FAMILY FOUNDATION | MACCARTHY FOUNDATION  
WILLIAM R. ORTHWEIN, JR. AND LAURA RAND ORTHWEIN FOUNDATION | PERSHING CHARITABLE TRUST  
LOUIS W. RIETHMANN, JR. FOUNDATION | CRAWFORD TAYLOR FOUNDATION | TYNEWALD FOUNDATION | THE WHITAKER FOUNDATION

\$50,000 to \$99,999



MARY RANKEN AND ETTIE A. JORDAN CHARITABLE FOUNDATION

\$25,000 to \$49,999

Aon  
Emerson  
E. Reuben and Gladys Flora Grant  
Charitable Trust  
William T. Kemper Foundation  
National Endowment for the Arts  
Mary Pillsbury  
Edward H. and Rosemary Young Fund of  
the St. Louis Community Foundation

\$10,000 to \$24,999

AARP  
Ascension  
The Boeing Company  
Matching Gift Program  
Bryan Cave Leighton Paisner LLP  
BSI Constructors  
Commerce Bank  
Edison Family Foundation  
Edward Chase Garvey  
Memorial Foundation  
JCA Charitable Foundation  
Jet Linx  
Kaldi's Coffee  
The Kuhn Foundation  
Moneta Group  
Eric P. & Evelyn E. Newman Foundation  
PwC  
Spoehrer Family Charitable Trust  
est by Mr. & Mrs. Hermann F. Spoehrer  
Steinway Piano Gallery  
University of Health Sciences  
and Pharmacy in St. Louis  
Washington University Physicians  
The Harlene and Marvin Wool  
Foundation

\$5,000 to \$9,999

American Direct Marketing  
Resources LLC  
BNSF Railway Foundation  
Caleres, Inc.  
Caravus, LLC  
Centene Charitable Trust  
Employees Community Fund of  
Boeing St. Louis  
G.A., Jr. and Kathryn M. Buder  
Charitable Foundation  
Graybar Electric Co.  
The Fletcher Jones Foundation  
KPMG LLP  
League of American Orchestras  
Frank Leta Automotive Family  
John L. Messmore Fund of the  
St. Louis Community Foundation  
PNC Financial Services Group, Inc.  
Prestige Consumer Healthcare  
Regions Bank  
UMB Bank  
Suzanne Feld Zalk Charitable Trust

\$2,500 to \$4,999

Commerce Trust Company  
Drury Hotels  
ESCO Technologies Foundation  
Link Auction Galleries  
The Pillsbury Foundation  
Frank A. and Alpha H. Ruf Fund  
  
**\$1,500 to \$2,499**  
Cisco Systems Matching Gift Program  
Dierbergs Markets  
GadellNet  
Mercer Investments, LLC  
George K. and Marjorie McCarthy  
Robins Fund of the St. Louis  
Community Foundation  
Rubin Brown LLP  
Anonymous

The St. Louis Symphony Orchestra honors six special members of our Board family who passed away this year. The SLSO would not be the same without their leadership, dedication, and generosity. We are grateful for their longtime support and remarkable service to the SLSO and St. Louis community.



C. Robert Farwell

Bob was a loyal SLSO supporter for decades. He also was an active member of the Board and served as Board treasurer.



Ned O. Lemkemeier

Ned was a longtime champion of the SLSO and an extraordinary leader, serving on the Board in various capacities for more than 20 years, including five years as Board Chair.



Sally S. Levy

In addition to serving on the Board for eight years, Sally was an active SVA member and longtime subscriber. She also was a founding board member of Opera Theatre of Saint Louis.



Michael F. Neidorff

Michael was a visionary leader, generous philanthropist, and champion of the arts. He joined the SLSO Board in 1989 and served in a variety of roles, including Board Chair in the 1990s and more recently as a member of the Endowment Trust.



Jerry Ritter

Jerry was a close friend of the SLSO. He was a regular patron and served on the SLSO's Endowment Trust for several years.



Walter G. Shifrin

Walter was a tremendous force and supporter of the SLSO. He was an active Board member and a generous music lover, attending SLSO concerts and events every week.





# Administration 142nd Season 2021/2022

## EXECUTIVE LEADERSHIP

**Marie-Hélène Bernard**  
President and Chief Executive Officer

**Yolanda Alover**  
Vice President, External Affairs and Equity, Diversity, and Inclusion

**Vicki Boutwell**  
Vice President, Communications

**Erik Finley**  
Vice President and General Manager

**Julie Gibbs**  
Vice President and Chief Philanthropy Officer

**Unitey Kull**  
Vice President of Marketing and Audience Experience

**David Nischwitz**  
Vice President of Marketing and Audience Services (through January 2022)

**Steven Rosenzweig**  
Chief Financial Officer

**Matthew Stansfield**  
Executive Assistant

## ARTISTIC AND OPERATIONS

**Maggie Bailey**  
Director of Operations

**Brandon Bird**  
Assistant Orchestra Personnel Manager (through July 2022)

**Katie Brill**  
Production Associate (through May 2022)

**Ian Kivler**  
Artistic Administrator

**Audrey Kwong**  
Artistic Operations Manager

**Cacia Meeks**  
Director of Orchestra Personnel

**Susan Patterson**  
Manager Symphony Chorus

**Kyle Pyke**  
Audio Recording Engineer

**Juliet Schreiber**  
Artistic Coordinator

**Alana Weber**  
Artistic Operations Assistant

**Andrew Williams**  
Associate Orchestra Personnel Manager

## EDUCATION AND COMMUNITY PARTNERSHIPS

**Maureen Byrne**  
Associate Vice President, Education and Community Partnerships

**Michelle Byrd**  
IN UNISON Chorus and Programs Coordinator

**Joseph Hendricks**  
Education and Community Partnerships Assistant

**Jessica Ingraham**  
Director of Education

**Nadia Maddex**  
IN UNISON Arts Administration Fellow

**Sarah Ruddy**  
Education Programs Coordinator

**Samantha Sachtleben**  
Youth Orchestra Manager

## MUSIC LIBRARY

**Katie Klich**  
Librarian

**Henry Skolnick**  
Associate Librarian

**Amanda Tallant**  
Assistant Librarian

**STAGE CREW**  
**Joe Rudd**  
Stage Manager

**Ron Bolte, Jr.**  
Assistant Stage Manager (Sound)

**Nigel DeLuca**  
Assistant Stage Manager (Lighting)

**Rick McKenna**  
Stagehand

**M. Jason Pruzin**  
Stage Manager (through February 2022)

**COMMUNICATIONS**  
**Caitlin Custer**  
Communications Manager

**Eric Dundon**  
Public Relations Manager

**Drew Fulton**  
**Matt Rice**  
(through April 2022)  
Video Producers

**Tim Munro**  
Creative Partner

**MARKETING AND AUDIENCE SERVICES**  
**Aliyah Blackburn**  
Graphic Designer

**Lesley Chaney**  
Marketing Analyst

**Daniel Glen**  
Director of Creative Services

**Mary Helbling**  
Director of Marketing (through July 2022)

**Julie Kruempel**  
Marketing Consultant

**Brittney Leimkuehler**  
Assistant Box Office Manager

**Maribeth McAnany**  
Front of House Operations Manager

**Hannah Reffett**  
**Julianna Nichols**  
(through March 2022)  
Marketing Coordinators

**Dave Moore**  
VIP Services Manager (through July 2022)

**Alyssa Przygoda**  
Box Office Manager

**Rachel Sennett**  
Digital Marketing Manager

**Amy Tang**  
Digital Marketing Coordinator

**Kelsey Templeton**  
Director of Hospitality and Audience Experience

## PHILANTHROPY

**Katharine Albritton**  
Manager, Stewardship and Events

**Mary Balmer**  
Associate, Philanthropy

**Lexi Becker**  
Grantwriter

**Anne Marie Block**  
Coordinator, Philanthropy Operations

**Rochelle Calhoun**  
Manager, Sponsorships and Corporate Relations

**Christina Cook**  
Director, Philanthropy Operations

**Sue Crisp**  
Manager, Philanthropy Communications

**Annie Daum**  
Database Coordinator, Philanthropy Operations

**Joe Drexelius**  
Director, Individual Giving/Annual Campaign

**Laura Dwyer**  
Director, Volunteer Programs

**Larry Harrison**  
Senior Director, Planned Giving

**Richard Kranes-Rutz**  
Senior Director, Major Gifts

**Christina Kruger**  
Annual Fund Manager

**Kristin Lamprecht**  
Director, Philanthropy Stewardship and Events

**Jennifer Lemons**  
Philanthropy Data Coordinator (through June 2022)

**Danielle Madrid**  
Senior Director, Institutional Philanthropy

**Betsy Malinak**  
Associate Vice President, Individual Giving (through January 2022)

**Brittney McIntyre**  
Manager, Institutional Philanthropy (through July 2022)

**Lillian Pinto de Sá**  
Senior Director of Institutional Philanthropy (through June 2022)

**K.J. Reynolds**  
Philanthropy Coordinator (through June 2022)

**Elaine Wichmer**  
Director, Individual Philanthropy Major and Planned Giving

## FINANCE AND ADMINISTRATION

**Jay Accola**  
Assistant Controller

**Heather Collins**  
Payroll and Accounting Associate

**Rita Doerr**  
Assistant to the Chief Financial Officer

**Jeff Jaeger**  
Controller

**Tina Polette**  
Senior Accounts Payable/Payroll Associate

**FACILITIES**  
**Cynthia Schon**  
Director of Facilities

**Joel Bischoff**  
Maintenance Technician

**Rob Craft**  
Building Engineer

**HUMAN RESOURCES**  
**Allison Friedman**  
Human Resources Director

**Sarah Anderson**  
Hiring Coordinator

**Cathie Degler**  
Director of Human Resources (through February 2022)

**Carrie Hendricks**  
Human Resources and Benefits Specialist (through July 2022)

**INFORMATION TECHNOLOGY**  
**Bob Olimpio**  
Director of Information Technology

**Mitch AuBuchon**  
Network Support Technician

**Alec Bowen**  
Database Administrator (through June 2022)

**CONSULTANTS**  
**John Easley**  
Philanthropy Consultant

**Sherri Prentiss**  
Marketing Consultant

**Molly Salky**  
Philanthropy Consultant

**Nikki Scandalios**  
Communications Consultant



St. Louis Symphony Chorus

<b>Amy Kaiser</b> <i>Director</i>	Cherstin Byers Leslie Caplan Victoria Carmichael Mark P. Cereghino Timothy A. Cole Jordan Comish Devoree Clifton Crist Derek Dahlke Laurel Ellison Dantas Mary C. Donald Ladd Faszold Alan Freed Mark Freiman Amy Telford Garcés Megan E. Glass Justino Gordón Steven Grigsby James Haessig Susan H. Hagen Michelle D. Harry Nancy J. Helmich Ellen Henschen Heather Humphrey	Matthew Jellinek Kerry Jenkins Preston Jordan James Kalkbrenner Patricia Kofron Elena Korpalski Christina Kruger Paul Kunnath Sarah Lancaster William Larson Debby Lennon Gina Malone Patrick C. Mattia Emese Mattingly Charles McCall Timothy John McCollum Elizabeth McKinney Scott Meidroth Jei Mitchell-Evans Emily Mae Nelson Hannah Nelson Duane L. Olson Nariana (Nadiana) Ortiz	Susan D. Patterson Trent A. Patterson Matt Pentecost Brian Pezza Daniel A. Pickett David Pierce Abigail M. Powers Sarah Jane Price Amy E. W. Prince Shelly Ragan Valerie Christy Reichert Kate Reimann Terree Rowbottom Nathan Tulloch Ruggles Mark Saunders Mark V. Scharff Leann Schuering Victoria Siddell Janice Simmons-Johnson Charles G. Smith Nick Spector Matthew Stansfield Brent Stater
--------------------------------------	---	---	--

Adam Stefo Alyssa Strauss Heather Butler Taylor Nora Justak Teipen Byron E. Thornton Natanja Tomich Diane Toomey-Watson Philip Touchette DeWayne Trainer Pamela M. Triplett David R. Truman Greg Upchurch Robert Valentine Robert Voelker Samantha Wagner Susan Donahue Yates Danielle Yilmaz Carl S. Zimmerman
--

St. Louis Symphony IN UNISON Chorus

<b>Kevin McBeth</b> <i>Director</i>	Valencia Branch* Patricia Brown Lynette G. Brunson+ Marvin C. Brunson+ Michelle Byrd Rochelle Calhoun Dillon Carl* Beverly Charisse+ Denise Clothier Vernetta Cox Cynthia Davis Reginald Davis Linda S. Davner-Richie+ Charita A. Dones Maggie Dorsey + Elaine P. Dowdle Michael Engelhardt Bekah Ford* Vivian Fox	Beth Enloe Fritz Grace Lee Fulford Maggie Gann Ruth A. Gilliam+ Gregory Green Deborah Grupe Leslie Hanlin Jared Hennings Dorothy T. Heyward Natalie Hill Lawrence Hudson-Lewis Carole A. Hughes+ Don Hutcherson Annie M. Jackson+ Joyce Jefferson Alexandar Johnson* Lisa Johnson Stanley R. Johnson Jr. Barrie C. Jones+	Tericida L. Jones Julie Lynch Nadia Maddex* Margaret Ann McCabe Wilberline McCall Tiffany McClenton Vickie Minter Harry V. Moppins Jr. Mary Moorehead Diane J. Peal+ Harry A. Penelton III Patricia Penelton+ Eric W. Pitts Adrian Rice Jackie Richardson Kathleen Schroeder Christopher Scott Austin Shariff* Teresia Simmons
--	--	---	--

Denise Sleet Diane Smoot Charles D. Stancil Wynton Stuart Karen Thomas-Stuart Althelia Powell-Thomas+ Sharon Thurman Lisha Tucker Kwamina Walker-Williams+ Gracie Ward Kelly Ward Gwendolyn Wesley+ Diana West Eric Williams* Glen E. Williams+ Charter Member+ Young Artist*
---

Charter Member\*  
Young Artist\*

St. Louis Symphony Orchestra 142nd Season 2021/2022

**ARTISTIC LEADERSHIP**  
**Stéphane Denève**  
*Music Director*  
**Stephanie Childress**  
*Assistant Conductor and Music Director of the Youth Orchestra*

**Amy Kaiser**  
*Director of the St. Louis Symphony Chorus*  
*AT&T Foundation Chair*

**Kevin McBeth**  
*Director of the St. Louis Symphony IN UNISON Chorus*

**Leonard Slatkin**  
*Conductor Laureate*

**FIRST VIOLINS**  
**David Halen**  
*Concertmaster*  
*Eloise and Oscar Johnson, Jr. Chair*

**Heidi Harris**  
*Associate Concertmaster*  
*Louis D. Baumont Chair*

**Celeste Golden**  
*Second Associate Concertmaster*

**Erin Schreiber**  
*Assistant Concertmaster*

**Dana Edson Myers**  
*Justice Joseph H. and Maxine Goldenhersh Chair*

**Ann Fink**

**Jessica Cheng Hellwege**  
*Margaret B. Grigg Chair*

**Emily Ho**

**I-Jung Huang**

**Hannah Ji**

**Joo Kim**

**Melody Lee**

**Xiaoxiao Qiang**

**Angie Smart**  
*Mary and Oliver Langenberg Chair*

**Hiroko Yoshida**

**SECOND VIOLINS**  
**Alison Harney**  
*Principal*  
*Dr. Frederick Eno Woodruff Chair*

**Kristin Ahlstrom**  
*Associate Principal*  
*Virginia V. Weldon, M.D. Chair*

**Eva Kozma**  
*Assistant Principal*

**Andrea Jarrett**

**Rebecca Boyer Hall**

**Nicolae Bica**

**Janet Carpenter**

**Lisa Chong**

**Ling Ling Guan**

**Asako Kuboki**

**Wendy Plank Rosen**

**Shawn Weil**

**Jecoliah Wang\*\***

**VIOLAS**  
**Beth Guterman Chu**  
*Principal*  
*Ben H. and Katherine G. Wells Chair*  
*Associate Principal*

**Jonathan Chu**  
*Assistant Principal*

**Michael Casimir**

**Andrew Francois**

**Susan Gordon**

**Leonid Plashinov-Johnson**

**Chris Tantillo**

**Shannon Farrell Williams**

**Xi Zhang**

**CELLOS**  
**Daniel Lee**  
*Principal*  
*Frank Y. and Katherine G. Gladney Chair*

**Melissa Brooks**  
*Associate Principal*  
*Ruth and Bernard Fischlowitz Chair*

**David Kim**  
*Assistant Principal*

**Elizabeth Chung**

**James Czyzewski**

**Jennifer Humphreys**

**Alvin McCall**

**Bjorn Ranheim**

**Yin Xiong**

**DOUBLE BASSES**  
*Underwritten in part by a generous gift from Dr. Jeanne and Rex Sinquefeld*

**Erik Harris**  
*Principal*  
*Henry Loew Chair*

**Aleck Belcher**  
*Associate Principal*

**Christopher Carson**  
*Assistant Principal*

**David DeRiso**

**Brendan Fitzgerald**

**Sarah Hogan Kaiser**

**Ronald Moberly**

**HARP**  
**Allegra Lilly**  
*Principal*  
*Elizabeth Eliot Mallinckrodt Chair*

**FLUTES**  
**Principal\***  
*Herbert C. and Estelle Claus Chair*

**Andrea Kaplan**  
*Associate Principal*

**Jennifer Nitchman**

**Ann Choomack**

**PICCOLO**  
**Ann Choomack**

**OBOES**  
**Jelena Dirks**  
*Principal*  
*Morton D. May Chair*

**Philip Ross**  
*Associate Principal*

**Xiomara Mass**

**Cally Banham**

**ENGLISH HORN**  
**Cally Banham**

**CLARINETS**  
**Scott Andrews**  
*Principal*  
*Walter Susskind Chair*

**Diana Haskell\*\*\***  
*Associate Principal*  
*Wilfred and Ann Lee Konneker Chair*

**Tzuying Huang**

**Ryan Toher\*\***

**BASS CLARINET**  
**Tzuying Huang**

**E-FLAT CLARINET**  
**Ryan Toher\*\***

**BASSOONS**  
**Andrew Cuneo**  
*Principal*  
*Molly Sverdrup Chair*

**Andrew Gott**  
*Associate Principal*

**Felicia Foland**

**CONTRABASSOON**  
*Chair vacant\**

**HORNS**  
**Roger Kaza**  
*Principal*  
*W.L. Hadley and Phoebe P. Griffin Chair*

**Thomas Jöstlein**  
*Associate Principal*

**Tod Bowermaster**

**Julie Thayer**

**Victoria Knudtson**

**Spencer Park\*\***

**TRUMPETS**  
**Karin Bliznik**  
*Principal*  
*Symphony Volunteer Association Chair*

**Thomas Drake**  
*Associate Principal*

**Michael Walk**

**Austin Williams\*\***

**TROMBONES**  
**Timothy Myers**  
*Principal*  
*Mr. and Mrs. William R. Orthwein, Jr. Chair*

**Amanda Stewart**  
*Associate Principal*

**Jonathan Reycraft**

**BASS TROMBONE**  
**Gerard Pagano**

**TUBA**  
**Principal\***  
*Lesley A. Waldheim Chair*

**TIMPANI**  
**Shannon Wood**  
*Principal*  
*Symphony Volunteer Association Chair*

**Associate Principal\***  
*Paul A. and Ann S. Lux Chair*

**Edouard Beyens\*\***

**PERCUSSION**  
**William James**  
*Principal*  
*St. Louis Post-Dispatch Foundation Chair*

**Alan Stewart**  
*Associate Principal*  
*Alyn and Marlyn Essman Chair*  
**Edouard Beyens\*\***

**KEYBOARD INSTRUMENTS**  
**Principal\***  
*Florence G. and Morton J. May Chair*

*Chair vacant\**  
*Replacement\*\**  
*Leave of Absence\*\*\**





s|s|o

St. Louis Symphony  
Orchestra

stéphane denève : music director

314-533-2500 | [slo.org](http://slo.org) | [f](#) [t](#) [i](#) [v](#)

PROUD TO BE

**STLMADE**