

23
24

144th Season

Groups Guide

Music
brings us
together.

St. Louis Symphony Orchestra Stéphane Denève | Music Director





Welcome to the St. Louis Symphony Orchestra

Experience live music in the best way—by enjoying it with others! Share the power of orchestral music with your group of ten or more people and receive special benefits designed to enhance your experience with the St. Louis Symphony Orchestra.

We specialize in hosting:

- **Family gatherings and reunions**
 - **School field trips**
 - **University students**
 - **Employee engagement events**
 - **Corporate events**
 - **Faith-based organizations**
 - **Senior living outings**
 - **Leisure group travel**
 - **Adult and student tour operators**
 - **Associations and special interest groups**
- and more!*



To learn more, visit slso.org/groups.



Group benefits with 10 or more people:

- **Curated Service** One-on-one, personalized service, including seat selection, concert suggestions, local restaurant recommendations, and more
- **Group Discounts** Up to 20% off the single ticket price when you bring 10 or more people
- **Student Rates** \$15 student tickets to classical performances and up to 20% off special events
- **Priority Seating** Early-bird reservations prior to public on-sale dates guarantee groups can sit together
- **Free Bus Parking** Parking, map, and transportation information included with all group orders
- **Performance Enhancements** Pre-concert conversations, guest artist meet-and-greets, program notes, and pre-and-post-concert receptions
- **No Ticket Order Fees** No order fees provide groups with additional savings
- **Complimentary Tickets** Provided based on group category, number of purchased tickets, and performance availability



Contact:

Susan Roberts
Group Sales Manager
314-286-4155
groups@slso.org

A group sales professional with more than 20 years experience, Susan looks forward to working with you to create meaningful experiences tailored to your group's specific needs.

Meet Your 23/24 Venues

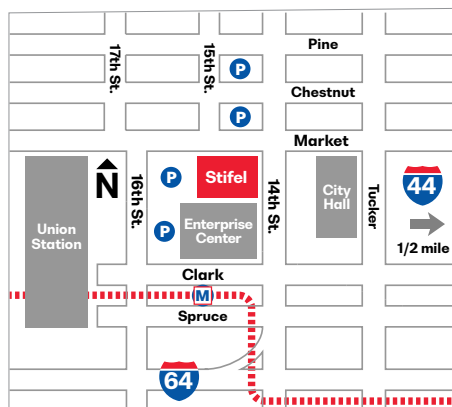
We welcome your group to join us at our “home away from home” venues as we work to enhance and expand Powell Hall.



Touhill Performing Arts Center at UMSL

1 Touhill Cir, St. Louis, MO 63121

Located in St. Louis County on the campus of the University of Missouri–St. Louis, this modern version of a classic opera house has been a landmark performance venue since 2003.



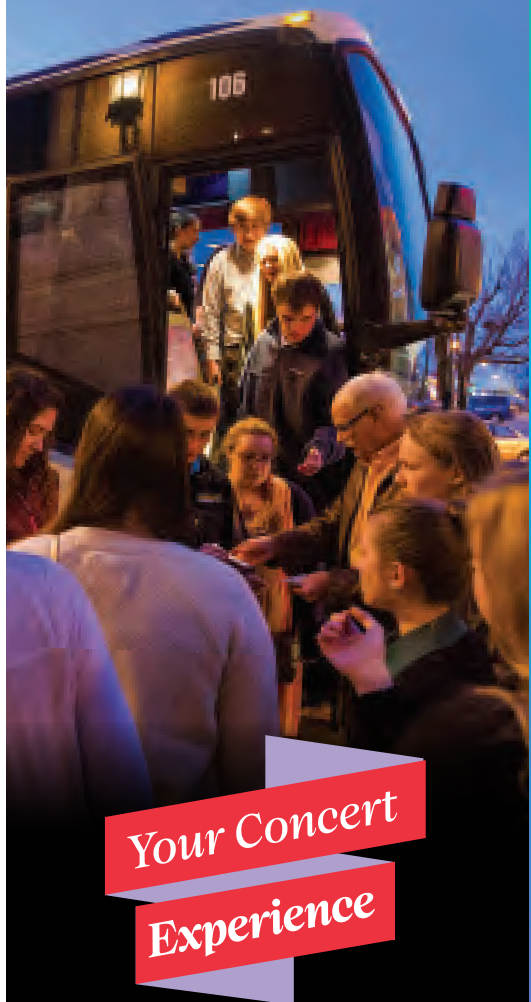
Stifel Theatre

1400 Market St, St. Louis, MO 63103

Located in the heart of downtown, Stifel was home to the SLSO from 1934 to 1968. This season, the SLSO shows off the Stifel Theatre’s majestic interior with programs of epic scale and scope.

Hop Aboard the Symphony Shuttle!

Avoid parking and let us do the driving. Shuttle service will be available for all classical concerts at both Touhill Performing Arts Center and Stifel Theatre. Don’t forget to add shuttle tickets to your group reservation when booking. Reserve your seat today by contacting Susan Roberts, Group Sales Manager, at 314-286-4155 or groups@slso.org.



Your Concert
Experience

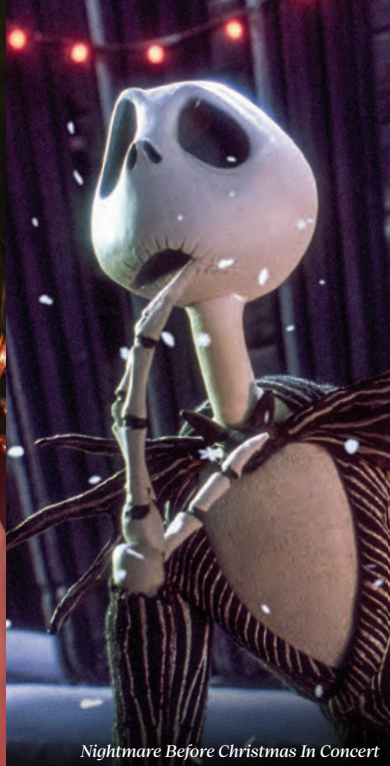


Venues,
Seat Maps,
Parking,
Shuttles,
& More

slso.org/season



Hilary Hahn



Nightmare Before Christmas In Concert



Aaron Diehl



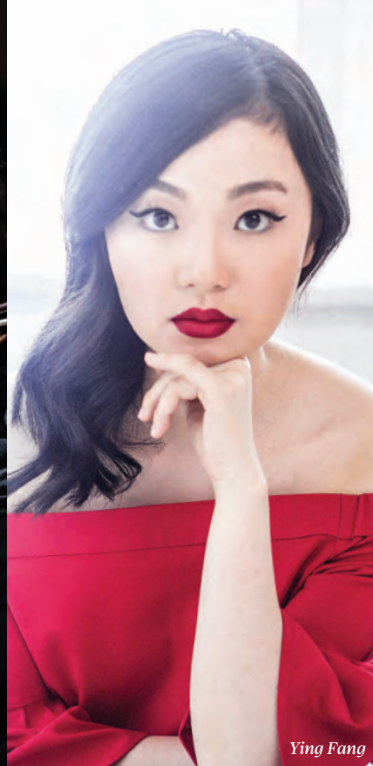
Symphony Chorus



Home Alone In Concert



Augustin Hadelich



Ying Fang



IN UNISON Chorus



Randall Goosby

Explore the 23/24 Season

Bring your group of 10 or more and save up to 20%!

September

Forest Park Concert Sep 21

Thu at 7:00pm

Stéphane Denève, conductor

Performed in memory of **Mary Ann Lee**

Opening Weekend with Hilary Hahn

Sep 23–24

Sat at 7:30pm & Sun at 3:00pm

Stéphane Denève, conductor

Hilary Hahn, violin

Richard Strauss *Don Juan*
Felix Mendelssohn Violin Concerto
W.A. Mozart *The Magic Flute* Overture
Paul Dukas *The Sorcerer's Apprentice*
Richard Strauss *Till Eulenspiegel's Merry Pranks*

Presented by the **Thomas A. Kooyumjian Family Foundation**

Beethoven's First Piano Concerto

Sep 29–30

Fri at 10:30am* & Sat at 7:30pm

Stéphane Denève, conductor

Jonathan Biss, piano

Ludwig van Beethoven *Coriolan* Overture
Unsk Chin *subito con forza*
Ludwig van Beethoven Piano Concerto No. 1
Robert Schumann Symphony No. 4

October

The Nightmare Before Christmas In Concert

Oct 6 & 8 Fri at 7:00pm

& Sun at 2:00pm

Jason Seber, conductor

Presentation licensed by Disney Concerts. ©Disney. All rights reserved.

Mozart and Brahms

Oct 13 & 15

Fri at 7:30pm & Sun at 3:00pm

Cristian Măcelaru, conductor

Benjamin Beilman, violin

Hannah Eisendle *heliosis* (U.S. Premiere)
W.A. Mozart Violin Concerto No. 5, K. 219
Johannes Brahms Symphony No. 2

Beethoven's Third Piano Concerto

Oct 20–21

Fri at 10:30am* & Sat at 7:30pm

Elim Chan, conductor

Ingrid Fliter, piano

Elizabeth Ogonek *Moondog*
Ludwig van Beethoven Piano Concerto No. 3
Felix Mendelssohn Symphony No. 3, "Scottish"

November

Beethoven's Fourth Piano Concerto

Nov 3 & 5

Fri at 7:30pm & Sun at 3:00pm

Stéphane Denève, conductor

Paul Lewis, piano

Christoph Willibald Gluck "Dance of the Blessed Spirits" from *Orfeo ed Euridice*
Ludwig van Beethoven Piano Concerto No. 4
Maurice Ravel *Le Tombeau de Couperin*
Sergei Prokofiev Symphony No. 1, "Classical"

Presented by the **Thomas A. Kooyumjian Family Foundation**

Opera in Concert: Cavalleria rusticana

Nov 11–12

Sat at 7:30pm & Sun at 3:00pm

James Gaffigan, conductor

Heidi Melton, soprano; Antonio Poli, tenor

Meredith Arwady, contralto

Anthony Clark Evans, baritone

Katharine Beck, mezzo-soprano

St. Louis Symphony Chorus

Pietro Mascagni *Cavalleria rusticana*

in Concert

Katherine Beck's performance is supported by the **Sarah Bryan Miller Fund**.

Korngold and Dvořák

Nov 17–19

Fri at 10:30am*, Sat at 7:30pm, & Sun at 3:00pm

Christian Reif, conductor; Randall Goosby, violin

Vítězslava Kaprálová *Rustic Suite*
Erich Wolfgang Korngold Violin Concerto
Antonín Dvořák Symphony No. 7

Presented by the **Whitaker Foundation**

December

Beethoven's Second Symphony

Dec 1 Fri at 10:30am* & 7:30pm

David Danzmayr, conductor

Jelena Dirks, oboe

Jessie Montgomery Strum
Ralph Vaughan Williams Oboe Concerto
Ludwig van Beethoven Symphony No. 2

Presented by the **Thomas A. Kooyumjian Family Foundation**

Gospel Christmas

Dec 8 Fri at 7:30pm

Kevin McBeth, conductor

IN UNISON Chorus

Supported by **Bayer Fund**

Home Alone in Concert

Dec 9–10

Sat at 7:00pm & Sun at 2:00pm

Jason Seber, conductor

© 1990 Twentieth Century Fox

Mercy Holiday Celebration at Lindenwood

Dec 12–13

Tue & Wed at 7:30pm

Stuart Malina, conductor

Scarlett Strallen, vocals

Mercy Holiday Celebration at Stifel

Dec 16–17

Sat at 2:00pm & 7:30pm, Sun at 2:00pm

Stuart Malina, conductor

Scarlett Strallen, vocals

Mercy Holiday Celebration concerts presented by **Mercy**

Back to the Future In Concert

Dec 28–29 Thu & Fri at 7:00pm

© Universal City Studios LLC and Amblin Entertainment, Inc. All Rights Reserved.

New Year's Eve Celebration

Dec 31 Sun at 7:30pm

Norman Huynh, conductor

January

Porgy and Bess

Jan 12 Fri at 10:30am*

Leonard Slatkin, conductor

Kelly Hall-Tompkins, violin

George Antheil *A Jazz Symphony*
Jeff Beal Violin Concerto (World Premiere)
Duke Ellington *The Three Black Kings*
George Gershwin *Porgy and Bess*: A Symphonic Picture

Presented by the **Whitaker Foundation**

An American in Paris

Jan 13 Sat at 7:30pm

Leonard Slatkin, conductor

Victor Goines, clarinet

Darius Milhaud *La Création du monde*
Igor Stravinsky *Ebony Concerto*
Kurt Weill Suite from *The Threepenny Opera*
George Gershwin *An American in Paris*

Rhapsody in Blue

Jan 21 Sun at 3:00pm

Leonard Slatkin, conductor

Aaron Diehl Trio; Jeffrey Siegel, piano

Paul Turok *A Joplin Overture*
Mary Lou Williams Selections from *Zodiac* Suite
John Alden Carpenter *Krazy Kat*
George Gershwin *Rhapsody in Blue*

Musical Fables with Live Animation and Film

Jan 27–28

Sat at 7:30pm & Sun at 3:00pm

Stéphane Denève, conductor

Grégoire Pont, illustrator & animator

Peter & The Wolf Live, 2008 Oscar®

Winner for Best Animated Short Film

directed by Suzie Templeton

Albert Roussel *The Spider's Feast*
Francis Poulenc *Les Animaux modèles*
Sergei Prokofiev *Peter and the Wolf*

February

Barber and Price

Feb 2 Fri at 10:30am* & 7:30pm

Stéphane Denève, conductor

Augustin Hadelich, violin

Valerie Coleman *Umoja*
Samuel Barber Violin Concerto
Florence Price Symphony No. 3

Lunar New Year

Feb 10 Sat at 7:30pm

Norman Huynh, conductor

Carmina Burana

Feb 17–18

Sat at 7:30pm & Sun at 3:00pm

Stéphane Denève, conductor

Ying Fang, soprano

Sunnyboy Dladla, tenor

Thomas Lehman, baritone

St. Louis Symphony Chorus

St. Louis Children's Choirs

Alyson Moore, artistic director

Arvo Pärt *Cantus in Memoriam Benjamin Britten*

Lera Auerbach *Icarus*

Richard Wagner "Liebestod" from

Tristan and Isolde

Carl Orff *Carmina Burana*

Lift Every Voice A Black History Month Celebration

Feb 23 Fri at 7:30pm

Kevin McBeth, conductor; IN UNISON Chorus

Supported by **Bayer Fund**

March

Operatic Favorites

Mar 3 Sun at 3:00pm

Stéphane Denève, conductor

Erin Schreiber, violin; Melissa Brooks, cello

Claudio Monteverdi Toccata from *L'Orfeo*

W.A. Mozart *The Marriage of Figaro* Overture

Gioachino Rossini *The Barber of Seville* Overture

Giacomo Puccini Intermezzo from

Manon Lescaut

Vincenzo Bellini "Casta Diva" from *Norma*

Amilcare Ponchielli "Dance of the Hours" from *La Gioconda*

Ambroise Thomas *Mignon* Overture

Georges Bizet "Les Toréadors" from *Carmen*

Pablo de Sarasate *Carmen* Fantasy

Jacques Offenbach Barcarolle from

The Tales of Hoffmann

Jacques Offenbach Can-Can from

Gaité Parisienne

Encanto In Concert

Mar 9–10 Sat & Sun at 2:00pm

Presentation licensed by Disney Concerts. ©Disney. All Rights Reserved.

Romeo and Juliet

Mar 16–17 Sat at 7:30pm & Sun at 3:00pm

Stéphane Denève, conductor

The Big Muddy Dance Company

Kirven Douthitt-Boyd, choreographer

Aaron Copland *Appalachian Spring* Suite

Adam Schoenberg New Work (SLSO Commission)

Sergei Prokofiev *Romeo and Juliet* Suite

Presented by the **Whitaker Foundation**

Beethoven's Emperor Concerto

Mar 22–23 Fri at 10:30am*

& 7:30pm, Sat at 7:30pm

Stéphane Denève, conductor

Tom Borrow, piano

Hector Berlioz *Beatrice and Benedict* Overture

Julia Wolfe *Pretty* (SLSO co-commission)

Ludwig van Beethoven Piano Concerto No. 5, "Emperor"

Giuseppe Verdi Requiem

Presented by **Mary Pillsbury**

April

Star Wars: The Last Jedi In Concert

Apr 13–14 Sat at 7:00pm

& Sun at 2:00pm

Norman Huynh, conductor

© 2019 & TM Lucasfilm Ltd. All Rights Reserved. © Disney

*Complimentary refreshments courtesy of Kaldi's Coffee Roasting Co. and Eddie's Southtown Donuts

Beethoven's Second Piano Concerto

Apr 19–21

Fri at 10:30am*, Sat at 7:30pm, & Sun at 3:00pm

John Storgårds, conductor

Marie-Ange Nguci, piano

Jean Sibelius *Rakastava* (The Lover)

Ludwig van Beethoven Piano Concerto No. 2

Per Nørgård *Lysning* (Glade)

Jean Sibelius Symphony No. 7

Verdi's Requiem

Apr 27–28

Sat at 7:30pm & Sun at 3:00pm

Stéphane Denève, conductor

Hulkar Sabirova, soprano

Judit Kutasi, mezzo-soprano

Russell Thomas, tenor

Adam Palka, bass

St. Louis Symphony Chorus

Giuseppe Verdi Requiem

Presented by **Mary Pillsbury**

S Performance at Stifel Theatre

T Performance at Touhill Performing Arts Center at UMSL

L Performance at Lindenwood

F Film with Live Orchestra

H Holiday Concert

C Coffee Concert



groups@slso.org
314-286-4155
slso.org/groups

More concerts to be announced.