



s|so

St. Louis Symphony
Orchestra

Stéphane Denève : Music Director

23
24

144th Season

Annual
Report

Table of Contents

- 01 Letters from Music Director, President & CEO, and Board Chair
- 04 23/24 Soundscape
- 07 Our Impact
- 08 Celebrating Our Artists
- 10 Artistic Highlights
- 12 Education and Community Highlights
- 14 Celebrating the SLSO Family
- 16 Music for All
- 20 Financial Summary
- 22 Honor Roll
- 31 In Memoriam
- 34 SLSO Organization

23/24 SLSO BOARD MEMBERS

As of August 31, 2024

Officers

Steven L. Finerty
Chair

Marie-Hélène Bernard
President and CEO

Nancy Galvin
Vice Chair

Noémi K. Neidorff
Vice Chair

Kathleen T. Osborn
Vice Chair

David Steward
Vice Chair

Emily Rauh Pulitzer
Secretary

Dr. Donald M. Suggs
Assistant Secretary

Lawrence P. Katzenstein
General Counsel

Daniel C. Wessel
Treasurer

Trustees

Bhavani Amirthalingam

Barry H. Beracha

Elizabeth Mannen Berges*

Spencer Burke

Debbie Dillon*

Irasa Downing

Susan Eickhoff

Carolyn Graham Farrell

Carolyn F. Henges

Molly Hyland*

Marjorie M. Ivey

Dr. Gayle Jackson

Dr. Nicholas Kouchoukos

Dr. Kenneth Ludmerer

Steve Mackin

Marcela Manjarrez

Andrew O'Brien*

Dr. David W. Piston

Bjorn Ranheim*

Allison W. Roberts

Bella Sanevich

Stephen M. Savis*

Rachel Seward

Rex A. Sinquefield*

Sherry Sissac*

Thelma E. Steward

Alan Stewart

Mark Throdahl

Vija Turina

John Tvrdik

Peter Van Cleve

Susan M. Veidt

Kate Warne Riggs

Janet Williams

John Winski

Honorary Trustees

John R. Jordan, Jr.

Jo Ann Taylor Kindle

Dr. Mabel L. Purkerson

Andrew C. Taylor

Dr. Virginia V. Weldon**

Life Trustee

Carolyn F. Henges

Advisory Council

Mark B. Andrews

Alyson Appleton

Dr. Steven Baldwin

Maria Briggs

Ann Cortinervis

Ryan Easley

Tim Eby

Chris Eckrich

Logan W. Finerty

James G. Forsyth, III

Alice Goodman

Miran Halen

Jeannette Huey

Susan Hutchinson

Raegan Johnson

Jeff Kaplan

Audrey Katcher

Linda J. Lee

Dr. Frederik C. Lewis, Jr.

Al Li

Dr. Stephen Liang

Laurie Lock

Anney Perrine

Peggy Ritter

Katie Schankman

Janice Seele

Steve Seele

Ray M. Simon

Katerina I. Barquet Stege

Danna Stone

Mary Strauss

Ann M. Sullins

Kit Sundararaman

Heather Butler Taylor

Anne von der Heydt

Laura Vowel

Lee Wightman

Robert L. Williams**

Symphony Volunteer Association Board

Debbie Dillon
President

Patty Kaplan
Secretary

Jim Moore
Vice President, Philanthropy and Stewardship

Suzanne Seibel
Vice President, Education and Community Programs

Martha Duchild
Vice President, Membership

* Executive Committee member
** Deceased

Message from the Music Director

Mes chers amis,

I want to extend my deepest gratitude for your unwavering support and engagement during our 144th season, my fifth year as The Joseph and Emily Rauh Pulitzer Music Director. The 23/24 season was a vibrant celebration of orchestral and choral music that explored the timeless beauty of classical masterpieces and innovative sounds of contemporary compositions. We remain committed to pushing musical boundaries, connecting with our audiences in new and meaningful ways, and fostering a sense of belonging within our community.

Last year, we were delighted to welcome an extraordinary lineup of guest artists who enriched our season with their exceptional talents. The brilliance of Hilary Hahn, the youthful exuberance of Randall Goosby, the virtuosity of Augustin Hadelich, the artistry of Tom Borrow, and the dynamic Aaron Diehl Trio left lasting impressions on us all. Our unforgettable collaboration with Yo-Yo Ma at our spring gala was a true bright spot—a moment of musical transcendence that will be cherished for years to come.

Our commitment to championing new music was evident in the U.S. premiere of Hannah Eisendle's *heliosis*, the world premiere of Jeff Beal's *Body in Motion*, and the first SLSO performances of Julia Wolfe's *Pretty*, a co-commission with the Berlin Philharmonic and Houston Symphony. These performances honored the rich traditions of orchestral music while celebrating the innovation and creativity of this generation's most talented musical voices.

Of the many musical milestones last season, a considerable highlight was the introduction of our Live at The Sheldon chamber concert series,

curated by our very own musicians. This series, along with our Live at the Pulitzer series, which marked its 20th anniversary, allowed us to further showcase the intimate beauty of chamber music while deepening our connection with you, our audience. We also celebrated the release of our Bernstein and Williams album with Pentatone, featuring internationally acclaimed violinist James Ehnes—my first recording with the SLSO. Our partnership with St. Louis-based MorningStar Music now makes sheet music from the SLSO's IN UNISON Chorus available worldwide.

None of these accomplishments would have been possible without our extraordinary musicians, choruses, staff, and Symphony Volunteer Association, whose unwavering dedication inspires me every day. I am very pleased to welcome Samuel Hollister, Assistant Conductor and The Fred M. Saigh Youth Orchestra Music Director, and Erin Freeman, Director of the St. Louis Symphony Chorus, to our ranks. Their fresh energy and musical prowess will continue to elevate the artistic excellence of our talented organization.

Thank you once again for being a vital part of our musical family. Together, we will continue to celebrate the beauty and power of music.

Merci de tout coeur,



Stéphane Denève
The Joseph and Emily Rauh Pulitzer Music Director



Stéphane Denève

Letter from the Board Chair and President and CEO

Dear members and friends of the St. Louis Symphony Orchestra,

We are deeply honored to have shared so many extraordinary musical moments with you during our 2023/2024 season, and we are filled with immense pride in all that we have accomplished together. Our deepest gratitude goes out to you for your unwavering support of our mission—enriching lives through the power of music. It is your passion and dedication that fuels our ability to bring incredible musical experiences to life, and it has been an honor to have you with us every step of the way.

During our first year away from Powell Hall as our home is renovated and expanded, we have been continually amazed by the dedication and enthusiasm of our entire SLSO family and community. Under the artistic leadership of Music Director Stéphane Denève, our board has provided invaluable guidance and leadership, ensuring that our vision for the future remains steadfast. The resilience and resourcefulness of our staff and the outstanding artistry of our musicians have been nothing short of remarkable as they navigated the complexities of performing in new venues while eagerly preparing for the return to Powell Hall. We have cherished the opportunity to deepen our roots in

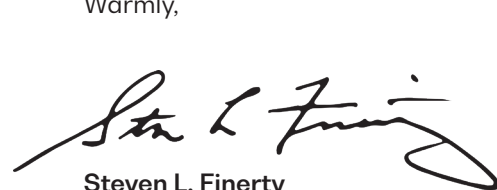
the community, and we look forward to continuing to foster these connections in the years to come.

We are now less than a year away from completing this ambitious project—a defining moment for our organization. We extend our heartfelt thanks to all who have supported this endeavor. Your generosity is shaping the future of music in St. Louis, creating a legacy that will inspire generations to come. In honor of our longtime supporter and philanthropic leader Jack C. Taylor, we are proud to name our music campus the Jack C. Taylor Music Center. This center will stand as a beacon of artistic excellence, community engagement, and educational impact—a place where music will continue to flourish and inspire.

As we look ahead, we are filled with excitement and anticipation. The grand reopening of Powell Hall in September 2025 will be a momentous occasion. We look forward to welcoming you to our newly renovated and expanded home to celebrate the bright future of the St. Louis Symphony Orchestra.

Thank you for being an integral part of this incredible journey. On behalf of the SLSO family, it is our great honor to share the joy of music with you.

Warmly,



Steven L. Finerty
Chair, Board of Trustees



Marie-Hélène Bernard
President and CEO



“Bravo, all musicians! Thank you for a glorious evening.

– SLSO patron

Featured 23/24 Performance Locations Soundscape

From concerts with community partners to performances at our “home away from home” venues, the SLSO reached audiences throughout the region. This map reflects just some of those spaces.

370 Lakeside Park



Shalom Church
(City of Peace)



St. Joseph
Catholic Church
Cottleville

Lindenwood University's
J. Scheidegger Center
for the Arts



Touhill Performing
Arts Center at UMSL



St. Louis Kaplan
Feldman
Holocaust
Museum



Manchester United
Methodist Church

Washington
University in
St. Louis

Cathedral
Basilica of
St. Louis

The Hub

World Wide
Technology
Raceway

Stifel
Theatre

Forest Park

Contemporary
Art Museum
St. Louis /
The Sheldon /
Pulitzer Arts
Foundation



Missouri Eastern
Correctional Center



“When the music began [my students] squealed with delight. After the concert ended, children talked excitedly about how big the sounds were and how the music made them feel.

– Dorie R., teacher, Atlas Public School

Our Impact



100,000+ social media followers were reached and 1 TikTok account was launched

306,000+ people reached through radio broadcasts

6,200+ education concert tickets provided to schools demonstrating financial need

930,000+

people experienced the SLSO live, through education and community programs, and through digital programs and media broadcasts

226,000+

people experienced the SLSO in person at venues across the region

230+ concerts, free events, and education programs

22,000+ guests attended the Forest Park Community Concert

3,757 free tickets were requested by clients of SLSO's 18 ACCESS partner organizations

350+ SVA members performed 6,500+ volunteer hours



449,000+

students and 1,300+ teachers were engaged with SLSO education programs

49 states and 13 countries reached through SLSO education programming

110+ Youth Orchestra musicians were mentored by SLSO musicians

130+ community partners

Musical Dedication

Celebrating Our Artists

The SLSO's family of musicians grew this year, deepening and expanding our artistry.

New Faces in Leadership

The SLSO welcomed two new members to the artistic leadership team in summer 2024. Samuel Hollister and Erin Freeman will shape the sounds of the St. Louis Symphony Youth Orchestra and the St. Louis Symphony Chorus.



Samuel Hollister

Assistant Conductor and The Fred M. Saigh Youth Orchestra Music Director

A multitalented musician, Samuel Hollister's career includes a variety of experiences, including Music Director of the Civic Orchestra of New Haven (Connecticut) and founder of Aurora Collaborative, a multi-disciplinary non-profit. "In Samuel," Stéphane Denève said, "I believe that we have found an exceptional young conductor who will follow our impressive lineage of talented and promising assistants." Hollister will conduct a variety of SLSO concerts, assist Denève, and guide the artistic vision of the Youth Orchestra, the region's premier training ensemble for talented young musicians.

Erin Freeman

Director of the St. Louis Symphony Chorus

Erin Freeman, a versatile artist, brings exceptional experience in conducting orchestras, choruses, ballet, and opera. As the third director of the Symphony Chorus since its founding in 1976, she succeeds Amy Kaiser. In her position, Freeman will lead the preparation of the Chorus for concerts with the SLSO, collaborating with Denève and a roster of international guest conductors. "When she worked with the Chorus in September, Erin's chemistry with the ensemble was palpable," said Denève.



Welcome New Musicians

In his largest slate of appointments to date, Denève named eight new musicians to the orchestra for the 23/24 season. Each musician's extraordinary artistry shined throughout the season. Additionally, the musicians immersed

themselves in the breadth of SLSO programming, joining chamber music performances, visiting schools, and sharing music throughout the community.



Blaine Dodson

Second Horn



Steven Franklin

Principal Trumpet
Symphony Volunteer
Association Chair



Peter Henderson

Principal Keyboard
Florence G. and
Morton J. May Chair



Seul Lee

Second Violin



Nathan Lowry

Second Violin



Jonathan Randazzo

Principal Trombone
Mr. and Mrs. William R.
Orthwein, Jr. Chair



Siyu Zhang

Second Violin

Leaving a Legacy

One musician retired at the end of the season, leaving a remarkable legacy following her years of service to the community. Ling Ling Guan, a member of the second violin section for 30 years, demonstrated a deep commitment to the orchestra and St. Louis throughout her tenure, serving as a soloist and performing in chamber ensembles. We wish Ling Ling a happy retirement.



Artistic Highlights

Exciting collaborations with guest artists and connections with new art forms helped define this exciting season.



Stéphane Denève and Hilary Hahn



Randall Goosby

Acclaimed Guest Artists

Once again, St. Louis proved to be an international performance destination as our orchestra performed alongside some of the world's greatest artists. Hilary Hahn, appearing with the orchestra for the first time in 20 years, opened the season with stunning passion. Five acclaimed pianists joined the orchestra to traverse all five of Beethoven's Piano Concertos. Electrifying young violinist Randall Goosby charmed audiences, and Augustin Hadelich showcased his signature virtuosity. Wintley Phipps and BeBe Winans raised their powerful voices alongside our IN UNISON Chorus. The Aaron Diehl Trio dazzled as part of a three-concert celebration of jazz conducted by Conductor Laureate Leonard Slatkin.



Yo-Yo Ma

Yo-Yo Ma

The season culminated in spectacular fashion with a gala event and concert featuring internationally acclaimed cellist and philanthropist Yo-Yo Ma. The humanitarian and music ambassador brought a full house to its feet with his heartfelt performance of Edward Elgar's Cello Concerto and contemplative encore by Pablo Casals. A highlight of the season for audiences and musicians alike, the collaboration was called "breathtakingly stellar" by critics.



Julia Wolfe and Stéphane Denève

World and U.S. Premieres

New works by living composers shined bright, expanding how we think of classical music and what it can say to us. Julia Wolfe drew inspiration from folk, classical, and rock music for her powerful work *Pretty* (commissioned by the SLSO with the Berlin Philharmonic and Houston Symphony). Emmy Award-winning composer Jeff Beal's violin concerto *Body in Motion*, written for soloist Kelly Hall-Tompkins, suggests, as Beal put it, "an embracing of life." The U.S. premiere of Viennese-born Hannah Eisendle's *heliosis* evoked a relentless heat and cinematic energy.

Our First Recording Release with Denève

The SLSO's storied recording catalog expanded with a new release on the Pentatone label of works by Leonard Bernstein and John Williams. The album features violinist James Ehnes, a frequent collaborator of the SLSO, performing Bernstein's Serenade after Plato's *Symposium* and Williams' Violin Concerto No. 1, conducted by Stéphane Denève.

"The added layer of movement lent itself perfectly to the moment of artistic intersectionality offered by the SLSO..."

— Kenya Vaughn,
The St. Louis American



Steve Hackman



St. Louis Dance Theatre

Artistic Collaborations

Distinct art forms elevated each other in unique collaborations this year. For the SLSO's first performances of Adam Schoenberg's *Picture Studies*, the orchestra was joined by St. Louis Dance Theatre (formerly the Big Muddy Dance Company), which performed modern dance choreographed by Artistic Director Kirven Douthit-Boyd. A collaboration with composer Steve Hackman brought together the music of Johannes Brahms and the rock band Radiohead to the delight of audiences.



Live at the Pulitzer

Pulitzer Series at 20

The SLSO's Live at the Pulitzer series—presenting bold contemporary chamber music—marked its 20th anniversary this year. Notable composer Christopher Stark curated the series for the first time, featuring works by thirteen living composers, including Pulitzer Prize-winner Raven Chacon. In this series known for pushing boundaries, audiences experience the connections between music and the artwork on view at the Pulitzer Arts Foundation.



Live at The Sheldon

Spotlight on SLSO Musicians

Curated and performed by SLSO musicians, a new chamber music series in partnership with The Sheldon debuted this season. The Live at The Sheldon series shines a spotlight on the musicians and the instruments they play. Programming spans the entire chamber music library, from celebrated favorites to new works by emerging composers, including four works by students at the University of Missouri.



Wintley Phipps with the IN UNISON Chorus

IN UNISON and MorningStar Partnership

In collaboration with St. Louis-based MorningStar Music Publishers, the SLSO began publishing sheet music of pieces performed and commissioned by our IN UNISON Chorus, making these works available worldwide for the first time. This exciting project broadens the reach of the chorus' mission to perform and preserve music from the African diaspora and elevates Black composers and arrangers.



St. Louis Symphony Chorus

Symphony Chorus

This spring saw the Symphony Chorus soaring with performances of Carl Orff's *Carmina Burana* and Giuseppe Verdi's Requiem, both conducted by Stéphane Denève. Joined by all-star casts of renowned vocalists, the SLSO captivated audiences with the emotion and intensity of these beloved choral-orchestral works.

Expanding Reach, Fostering Connections

Education & Community Highlights

Grounded in our commitment to education and access, the SLSO expanded its programs to reach deeper into our community and beyond.

SLSO ACCESS Expands Reach

Now in its second season, SLSO ACCESS broadens access to music by removing financial barriers to concert attendance. SLSO ACCESS provided more than 3,700 complimentary tickets this season in a bold alliance with social service organizations including Better Family Life, Beyond Housing, Pianos for People, the Urban League, the Little Bit Foundation, and ArchCity Defenders.



Community Concerts

Along with our beloved annual Forest Park concert, the SLSO performed dozens of free community concerts at museums, universities, libraries, houses of worship, and beyond. Highlights included the return of the annual IN UNISON Chorus Community Concert at Shalom Church (City of Peace), the newest IN UNISON partner church. A performance at 370 Lakeside Park in St. Peters attracted more than 3,000 people, hundreds of whom played and sang along to *Ode to Joy*. A powerful new program held in collaboration with the St. Louis Kaplan Feldman Holocaust Museum—Holocaust Composer Stories—highlighted the lives and legacies of composers whose music and stories were forever shaped by the Holocaust.



Sensory-conscious Concerts

Recognizing the varying needs of audience members, the SLSO introduced adaptations to select family and education programming to create a safe and welcoming environment for people with sensory differences. From concert guides to noise-cancelling headphones and a quiet room, these concerts now provide accommodations so that everyone may enjoy the experience of live orchestral music.



Tiny Tunes for Families

Designed for our youngest audiences—children aged 3–6—Tiny Tunes is an interactive concert experience that blends music and children’s literature. A longtime staple of our education concerts, Tiny Tunes is now available as a public concert for families. Performances capture children’s imagination with engaging pre-concert activities and audience participation.



Online Reach Expands

Digital offerings for teachers and students continued to expand this year. The newly added *Young Person’s Guide to the Orchestra*, designed for grades 1–5, reached more than 98,000 students and teachers in Missouri, Illinois, across the U.S., and around the world. The program includes a performance of the classic work as well as a fun backstage tour showcasing the teamwork that brings concerts to life.



Library Partnership

The SLSO launched an innovative initiative with the St. Louis Public and County Libraries to provide complimentary tickets for first-time SLSO attendees. More than 900 SLPL and SLCL patrons accessed complimentary vouchers to select classical concerts during the 23/24 season.

“It was the best field trip they had ever been on!”

– Denise G., music teacher,
St. Joseph Cathedral School



Lunar New Year Celebration

Among the season’s many collaborations, the February Lunar New Year performance stands out as an energy-filled crowd favorite. Presented in partnership with the Chinese Education and Culture Center in St. Louis and the Asian American Chamber of Commerce St. Louis, the concert featured SLSO musicians; conductor Norman Huynh, who shared stories of his family’s celebrations; soloist Rulin Olivia Zhang, who dazzled on the erhu; and the CECC dragon dance team and Thunder Drum team.



Guest Artist Lunch & Learn

In a special collaboration with the E. Desmond Lee Fine Arts Education Collaborative at UMSL, the SLSO hosted a Lunch & Learn with star violinist Randall Goosby. Students from Hazelwood West High School, Hazelwood Northwest Middle School, and Brittany Woods Middle School asked Goosby for advice about cultivating good practice habits and handling nerves before a performance. Following this rare opportunity to converse with an acclaimed artist, one young musician said, “I valued the opportunity to see an example of Black excellence in the orchestra.”

Our People

Celebrating the SLSO Family

The SLSO thrives thanks to a joyful and engaged family of constituents, including staff and musicians, Board members, volunteers, and generous supporters.



Steven Finerty and Stéphane Denève with gala co-chairs Jo Ann Taylor Kindle, Penny Pennington and Mike Fidler, and CEO Marie-Hélène Bernard



Stéphane Denève, Isabelle and Jean-Paul Montupet



Stéphane Denève, Penny Pennington

New Executive Appointment

In February, Alex Shapiro joined the SLSO as the institution's Chief Philanthropy Officer. Shapiro most recently served as Vice President of Philanthropy with the Kansas City Symphony. He brings a deep knowledge of the orchestra industry and an impressive track record in fundraising at arts institutions across the country.



Alex Shapiro

Gala Celebration

St. Louis arts supporters proved once again how engaged and generous they are at the SLSO's major fundraising event this spring. Under the leadership of co-chairs Jo Ann Taylor Kindle and Penny Pennington and Mike Fidler, the gala was a festive celebration that raised \$1.135 million for the SLSO's artistic, education, and community programs. The highlight of the event was a sold-out performance by the internationally acclaimed musician and philanthropist Yo-Yo Ma.

Thank You, SVA!

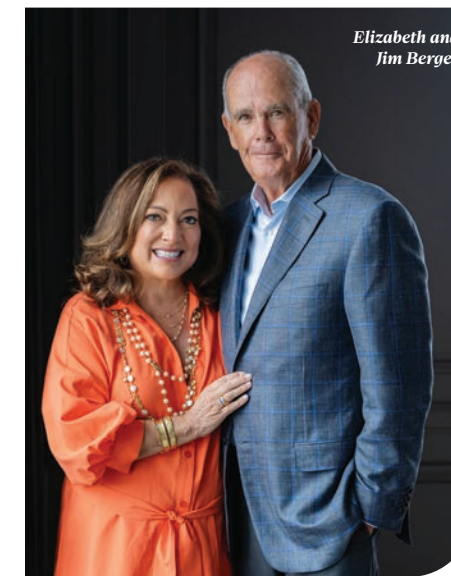
From greeting guests at new venues and guiding school groups to creating care packages for musicians, the work of the Symphony Volunteer Association has been essential to the SLSO's accomplishments this past year. SVA President Debbie Dillon said, "What impresses me most is how so many people have joined together with a shared goal of making this season successful." The SVA exhibited their deep dedication to the SLSO's future through a combined gift for the Music for All campaign.



Youth Orchestra musicians

Berges Family Challenge

"Music begins where words end... it transports you in a way," says longtime SLSO supporter Elizabeth Mannen Berges. Inspired by their love of the SLSO, Elizabeth and her husband, Jim, issued a \$2.5 million Berges Family Challenge in support of Music for All: The Campaign for the SLSO. The Berges Family Foundation is matching any gift or pledge in support of the Powell Hall renovation and expansion, making a critical investment in this legacy project.



Elizabeth and Jim Berges

YO Music Directorship Endowed

The SLSO's Youth Orchestra Music Director plays a key role in mentoring and inspiring some of the most accomplished young musicians in the St. Louis region. Thanks to a generous gift from The Saigh Foundation, named after the late Fred M. Saigh—a champion of St. Louis institutions and former owner of the St. Louis Cardinals—the position has been endowed in perpetuity as The Fred M. Saigh Youth Orchestra Music Director.

Pershing Fellow

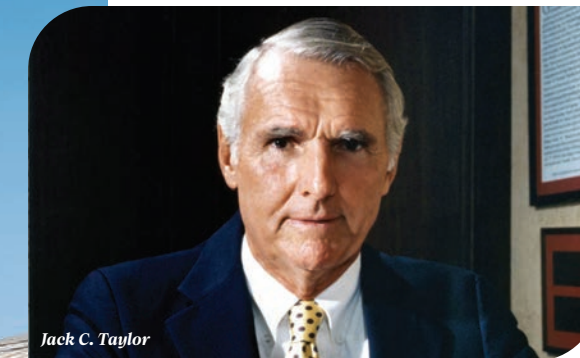
The Pershing Fellowship in Nonprofit Leadership introduces rising juniors and seniors to careers within the nonprofit community. This summer, Kaitlyn Buss, an International Business and Finance student at Saint Louis University's Richard A. Chaifetz School of Business, joined the SLSO as a Pershing Fellow. In her role, Kaitlyn assisted with and learned about arts administration, philanthropy, and marketing. Kaitlyn has many fond memories of attending SLSO concerts with her family and was a valuable addition to the team.

A Once-in-a-Generation Initiative

Music for All

Powell Hall, renowned for its acoustics and historical grandeur, is almost synonymous with the St. Louis Symphony Orchestra. Thanks to the extensive renovation and expansion project now underway, the nearly 100-year-old civic treasure will become a state-of-the-art music center and continue to be a beacon of inspiration, education, and transformative musical experiences for generations to come.

Join us for the grand opening of the Jack C. Taylor Music Center in September 2025—in time for Powell Hall's centennial and the start of the SLSO's 146th season—and experience firsthand this vibrant music center designed to serve the community and help shape the orchestra of the future.



Jack C. Taylor

Honoring a Legacy

The Jack C. Taylor Music Center—named in honor of the longtime orchestra patron, philanthropist, founder of Enterprise Mobility, and champion of St. Louis—will encompass Powell Hall as well as the 64,000-square-foot expansion, transforming the audience and artistic experience while protecting the hall's beloved character.

"No individual patron in the long and illustrious history of the SLSO has had a greater impact on the success of the orchestra as Jack Taylor, and it is fitting that our new music center will bear his name," says SLSO Board Chair Steven L. Finerty.

Through Taylor's historic \$40 million gift establishing the St. Louis Symphony Endowment Trust in 2000 and many subsequent gifts over nearly 25 years, the SLSO today is positioned for an exciting new era. The Jack C. Taylor Music Center will make music more accessible for all, deepening our impact far into the future.

Music for All Campaign

Thanks to the incredible generosity of so many donors and friends, we are nearing completion of our \$155 million goal for the renovation and expansion. Help us reach the finish line!

Gifts and pledges at all levels are appreciated and play a critical part in the SLSO's ability to create meaningful musical experiences for decades to come. We invite you to join us in this exciting initiative at slo.org/musicforall.

Looking Forward



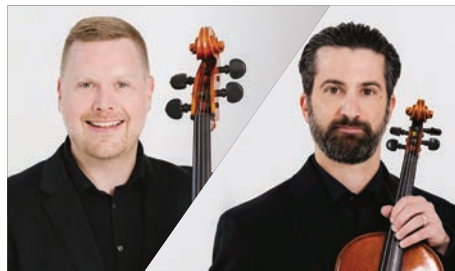
“Powell Hall has a soul. It adds a certain glow to the sound with its distinct character. I am so happy that this renovation will add to Powell Hall’s poetic sound.”
 – **Stéphane Denève, The Joseph and Emily Rauh Pulitzer Music Director**



“There’s gospel, there’s Bach, and everything in between. The variety elevates the whole shared experience, and I’m so looking forward to the renovated space, which will support all of that and more.”
 – **Annie Marshall, audience member**



“For many of my students, a visit to Powell Hall is their first exposure to live music. I love that the SLSO is dedicating a new space to enriching the musical experience of students and their teachers.”
 – **James McKay, teacher in the Hazelwood School District and music director at Gateway Music Outreach, on the new Education and Learning Center**



“The SLSO musicians are beyond excited to return to our beloved home. The added practice and rehearsal spaces, coupled with a beautiful musicians’ lounge, will make for a much more comfortable and productive environment.”
 – **Bjorn Ranheim and Chris Tantillo, co-chairs of the SLSO Musicians’ Council**



“A dedicated rehearsal space will give singers the space they need to hone their craft, create wonderful musical memories, and strengthen the social fabric of St. Louis.”
 – **Kwamina Walker-Williams, member of the St. Louis Symphony IN UNISON Chorus, on the new Education and Learning Center**

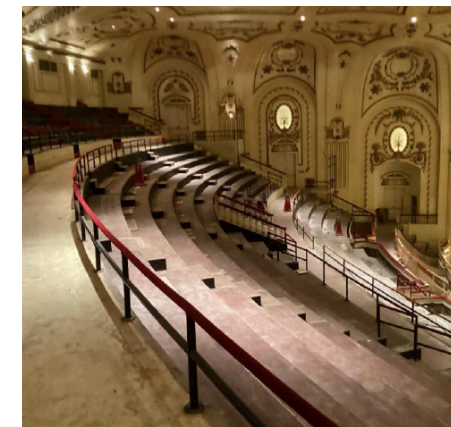


“Powell Hall is an extraordinarily beautiful space. When I bring people in from out of town, they are speechless because it’s so beautiful. And I’m so glad that will remain when the building reopens.”
 – **Leslie Caplan, member of the St. Louis Symphony Chorus**

Construction Highlights



AUGUST 2023
 Crews pour and finish the basement floor of the new backstage wing.



OCTOBER 2023
 Mechanical work begins following seat and carpet removal in the auditorium.



FEBRUARY 2024
 The Education and Learning Center rises to three stories tall.



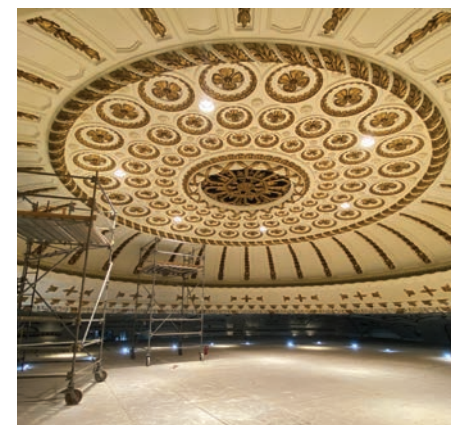
MARCH 2024
 Scaffolding fills much of the auditorium as cleaning and painting begins.



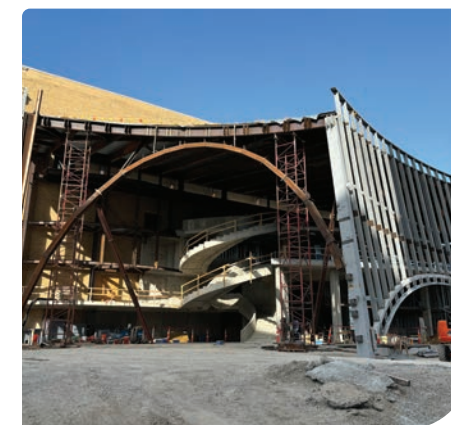
JUNE 2024
 Form work for the spiral staircase in the new front of house expansion begins.



JULY 2024
 Crews begin building the steel shell that will envelop the expansion.



AUGUST 2024
 Powell Hall’s iconic dome is cleaned and repainted.



SEPTEMBER 2024
 Steel form work continues on the new lobby, supporting a graceful arch on the south side of the structure.

Learn more
 about the project
 and its impact at
slo.org/musicforall

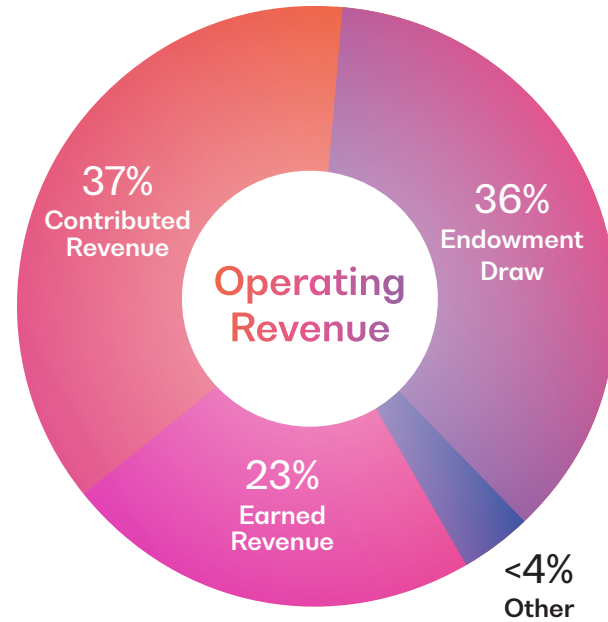
September 1, 2023–August 31, 2024
Financial Summary

Statement of Activities

Twelve Months Ending August 31, 2024* (\$ in thousands)

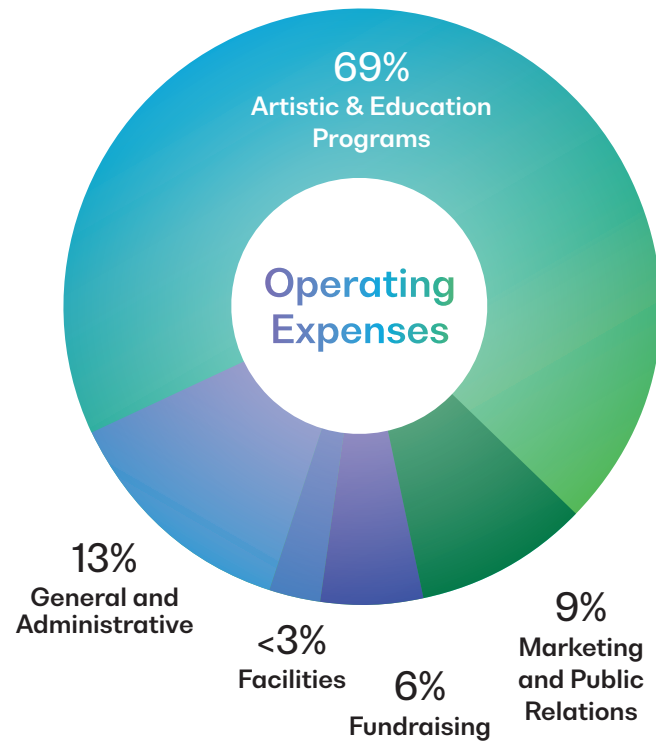
Revenue

Earned Revenue	\$6,891
Contributed Revenue	\$11,207
Endowment Draw	\$11,041
Other	\$1,129
TOTAL OPERATING REVENUE	\$30,268



Expenses

Artistic and Education Programming	\$21,320
Marketing and Public Relations	\$2,838
Fundraising	\$1,748
Facilities	\$818
General and Administrative	\$4,021
TOTAL OPERATING EXPENSES	\$30,746



Statement of Financial Position

Twelve Months Ending August 31, 2024* (\$ in thousands)

ASSETS

Cash and Cash Equivalents	\$14,256
Investments held by the Symphony	\$83,999
Investments held by the Endowment Trust	\$256,079
Receivables	\$37,837
Other assets	\$1,271
Property and Equipment (net)	\$75,368
TOTAL ASSETS	\$468,810

LIABILITIES AND NET ASSETS

Accounts Payable and Accrued Expenses	\$6,384
Deferred Revenue	\$2,445
Notes Payable	\$56,739
NPV of Annuity Obligations	\$273
Total Liabilities	\$65,841

NET ASSETS

Unrestricted	\$124,608
Temporarily Restricted	\$99,933
Permanently Restricted	\$18,428
Total Net Assets	\$402,969

TOTAL LIABILITIES AND NET ASSETS	\$468,810
---	------------------

“My mind was completely blown by the concert. I haven’t stopped thinking about it and talking about it.”
 –SLSO patron

*Preliminary and unaudited results.
 Excludes depreciation and campaign expenses.

Founders Society

\$10,000,000 or more

Arts and Education Council
Crawford Taylor Foundation
Des and Mary Ann Lee*
Pershing Charitable Trust
Joseph* and Emily Rauh
Pulitzer
Regional Arts Commission
Mr. Jack C. Taylor*
Mr. Howard H. Witsma*

\$5,000,000 to \$9,999,999

Bayer Fund
Centene Charitable
Foundation and Mr.* and
Mrs. Michael Neidorff
The Danforth Foundation
Edward Jones
Emerson
Enterprise Holdings
Foundation
Margaret Blanke
Grigg Foundation
William T. Kemper Foundation
Ms. Jo Ann Taylor Kindle
Missouri Arts Council
National Endowment
for the Arts
William R. Orthwein, Jr.
and Laura Rand
Orthwein Foundation
Rex and Jeanne Sinquefield
Steward Family Foundation
and World Wide Technology
Whitaker Foundation
Anonymous

\$2,500,000 to \$4,999,999

Ameren Corporation
Charitable Trust
Anheuser-Busch Foundation
AT&T
Mr. Francis M. Austin, Jr. and
Virginia V.* Weldon, MD
Mr. and Mrs. Barry H. Beracha
The Berges Family Foundation
The Boeing Company
The Ford Foundation
The Honorable and
Mrs. Sam Fox
Carolyn and Jay* Henges
Dr. and Mrs. W. R. Konneker*
The May Department
Stores Company
The Andrew W.
Mellon Foundation
The Mary Ranken and Ettie A.
Jordan Charitable Foundation
Mabel D. Reeder Foundation—
Mabel L. Purkerson, Trustee
Mr. and Mrs. Andrew C. Taylor

The St. Louis Symphony Orchestra gratefully acknowledges the following donors whose lifetime of philanthropic support distinguishes them among the SLSO's most generous benefactors. Founders Society members are honored for their total cumulative giving as of August 31, 2024.

Wells Fargo Advisors

Mr. and Mrs. Ben H. Wells*
Anonymous

\$1,000,000 to \$2,499,999

Bank of America
The Bellwether Foundation, Inc.
Gertrude and William A.
Bernoudy Foundation
Mr.* and Mrs. Jack Bodine
Caleres, Inc.
Miss Adelaide Cherbonnier*
Marian Bettman Cronheim*,
Andrew Bettman* and
Lewis Bettman*
Mr. and Mrs. Norman L. Eaker
Mr. and Mrs. Ernest A. Eddy, Jr.*
Edison Family Foundation
Department of Education
Mr. and Mrs. David C. Farrell*
Mr. and Mrs. Steven L. Finerty
Mr. and Mrs. Walter J. Galvin
Ann and Gordon Getty
Foundation
The Charles Stewart
Harding Foundation
Mr. and Mrs. Harvard K. Hecker*
Interco Charitable Trust
Lawrence Katzenstein and
Dr. Cheryl Quinn
John S. and James L.
Knight Foundation
Robert W. M. Kohlsdorf*
Thomas A. Kooyumjian
Family Foundation
Dr. and Mrs. Nicholas T.
Kouchoukos
Mr. and Mrs. Frederick S.
Kummer*
Mrs. Clinton W. Lane, Jr.
Stanley and Lucy Lopata
Charitable Foundation
MacCarthy Foundation
Mr. and Mrs. William Maritz*
MetLife Foundation
The Saigh Foundation
Sarah Bryan Miller*
State of Missouri
Eric P. & Evelyn E.
Newman Foundation
Andrew and Lori O'Brien
Spencer T. and Ann W.
Olin Foundation
Gordon and Susie Philpott
Mr. and Mrs. David C. Pratt
Pulitzer Foundation
Pulley Foundation
Mr. Robert W. Schaefer*
Leon* and Mary Strauss
U.S. Bank Foundation
Anonymous (2)

\$500,000 to \$999,999

Mr. and Mrs.* Mark B. Andrews
Aon
Kay and John* Bachmann
Mr. J. Thomas Bear, Jr.*
Lillian B. Boly*
Katherine "Kitten" Burg*
Audrey E. Claus*
Commerce Bancshares, Inc.
and Commerce
Bancshares Foundation
Edward Chase Garvey
Memorial Foundation
GenAmerica Financial Corp.
Mrs. Solon Gershman*
Grand Center, Inc.
E. Reuben and Gladys Flora
Grant Charitable Trust
Mrs. W. L. Hadley Griffin*
Darin B. Groll
Mr.* and Mrs. Whitney R. Harris
Marjorie M. Ivey
JSM Charitable Trust
Dr. and Mrs. William S. Knowles*
Eugene Kornblum
Linda and Paul Lee
Ned* and Sally Lemkemeier
Loren and Ken Ludmerer
Paul and Ann Lux*
Mr. and Mrs.* Richard J.
Mahoney
Mallinckrodt Pharmaceuticals
Maritz
Mercy
Ms. Maurine M. Milligan*
Penny Pennington and
Michael Fidler
PNC Financial Services
Group, Inc.
Ralston Purina Trust Fund
Louis W. Riethmann, Jr.
Foundation
Ms. Aurelia G. Schlapp*
Mr.* and Mrs. Walter G. Shifrin
Spire, Inc.
Norman J. Stupp Foundation—
Commerce Bank, Trustee
Mr. Leif J. Sverdrup*
Thompson Coburn LLP
Mr. and Mrs. H. Edwin Trusheim*
Tynewald Foundation
Mr. and Mrs. Hendrik A.
Verfaillie
Mr.* and Mrs. Orrin S.
Wightman, III
Edward H. and Rosemary
Young Fund of the St. Louis
Community Foundation
Anonymous (2)

\$250,000 to \$499,999

Dr. Grace B. Adams*
American Airlines
Ann and Paul Arenberg*
Aronson Charitable Trust
Suzanne and Dave Baetz
Ms. Carole E. Bailey*
The Louis D. Beaumont
Foundation
Mr. David A. Blanton, III
BMO Private Bank
Employees Community Fund of
Boeing St. Louis
Mr.* and Mrs. Laurance L.
Browning, Jr.
Mr. and Mrs. Paul R. Cahn
Mr. and Mrs. Thomas P. Danis
Mr. and Mrs.* Robert H.
Duesenberg
The Dula-Kobusch
Charitable Trust
Cynthia and Bill Durham*
Dr. and Mrs. Timothy J. Eberlein
Mr. and Mrs.* Richard G.
Engelsmann
Essman Family Charitable
Foundation
Mr. and Mrs. C. Robert Farwell*
Mr. and Mrs. James G.
Forsyth, III
Nancy Friedland and
James Florczak
Ms. Lucille E. Fuetterer*
Gateway Foundation
General Dynamics Corporation
Mr. and Mrs. William A. Gilbert
Margaret P. Gilleo* and
Charles J. Guenther, Jr.
Dr. Anne Carol Goldberg
Mrs. Maxine Goldenhersh*
Alice Goodman
Mr. Stanley J. Goodman*
Barbara Grace*
Graybar Electric Co.
Mr.* and Mrs. Sidney
Grossman, Jr.
Milton Hieken* and
Barbara Barenholtz
Ms. Alice L. Hillebrand*
David and Susan Hutchinson
Mrs. Robert R. Imse*
Joanne and Joel Iskiwitch
Jacobs/Sverdrup
Charles and Catalina Jamieson*
Dr. Ann J. Johanson*
Mr. and Mrs. John R. Jordan, Jr.
Mrs. Rosemarie Kirchoefer*
KPMG LLP
Krispy Kreme
Laclede Gas Company
Employees

Mr. and Mrs. Lawrence E.

Langsam
Sally S. Levy*
Mr.* and Mrs. Lee M. Liberman
Mr. and Mrs. Charles N. Lorenz*
Ms. Susan A. Lovelace*
Macy's, Inc. and Macy's
Foundation
Malcolm W. Martin*
MasterCard
The Morton J. May Foundation
Mr. and Mrs. Sanford N.
McDonnell*
Mr. and Mrs. Edwin B.
Meissner, Jr.*
David W. Mesker*
Microsoft Corporation
Isabelle and Jean-Paul
Montupet
Dr. Cora E. Musial
Phil* and Sima Needleman
Sanford and Rosalind Neuman*
George* and Melissa Paz
Peabody Energy
Mary Pillsbury
Eric N. and Sarah
Rainwater Ward
Nicholas and Patricia Reding
Mrs. Lucianna Gladney Ross*
Nancy and Don Ross
Ann R. Ruwitch and
John Fox Arnold
Schnuck Markets, Inc.
Stephen and Janice Seele
The Silk Foundation
Ray M. Simon
Dr. and Mrs. Richard G. Sisson*
Spoehrer Family Charitable
Trust est by Mr. & Mrs.
Hermann F. Spoehrer
Steinway Piano Gallery
Ann McFarland Sullins
Douglas B. Turner, Jr.*
Mr. Benjamin and
Dr. Susan Uchitelle
Susan Veidt
Mr. and Mrs.* Jan Ver Hagen
Mr. and Mrs. James
von der Heydt
Eleonore von Kern Nelson*
Lila Wallace-Reader's
Digest Fund
Mr. William Warmbold*
Ms. Phoebe Dent Weil
Mr. Robert L. Williams*
Dr. Richard D. Yoder*
Beth Zion Foundation
Anonymous (6)

\$100,000 to \$249,999

Accenture
Barbara and Ernest Adelman
Ms. Dorothea H. Allen*
Mr. and Mrs. Roger A. Altvater*
Maurice Amado Foundation

Mr. Edward Z. Andalafte*
Mary Ellen Anderson
Arthur and Jeanne Ansehl*
Mr.* and Mrs. Richard L. Aversa
Mr. and Mrs. Melvin C. Bahle*
Mr. and Mrs. W. Randolph Baker
The Baldwin Family Fund
Bank One
Diane Barnes*
Mr. and Mrs. Gene K. Beare*
Ted and Robbie Beaty
Stephen and Sandy Bell
Marie-Hélène Bernard and
Douglas Copeland
Drs. Mary E. Bickel and
J. Terry Gates
Michael Bobroff and Wendy Olk
Mrs. Lee Bohm*
Davalee Bohnenkamp*
Ellen E. Bonacorsi and
Thomas B. Kinsock
Michael D. Boone
Kirsten and Ed* Boyce
Richard Brasington*, MD and
Kathleen M. Ferrell
Stephen F. and Camilla T. Brauer
Mr. and Mrs. John A. Brennan, Jr.*
Thriess and Lynn Britton
Mr. and Mrs. Robert A. Brod*
Anatole* and Jacqueline Browde
The Dana Brown Charitable
Trust, U.S. Bank, Trustee
Mr.* and Mrs. Mel F. Brown
Bryan Cave Leighton Paisner LLP
BSI Constructors
Mr.* and Mrs. Roger W. Bucknell
Mr. and Mrs. Lester J. Buechele
Mrs. Gaylord Burke*
Phoebe and Spencer Burke
Mr. William M. Carey
Mr.* and Mrs. Don R. Carlson
Vernice and Paul Cassimatis*
Kathleen Clucas
Mrs. Leonard A. Cohn*
Mr. and Mrs. Laurence K.
Condie, Sr.
Karen and Bert* Condie
Ellen C. Cooley*
Bruce Coppock* and
Ms. Lucia May
Dr. and Mrs. William S. Coxe*
CPI Corporation
Mr. and Mrs. Lester Crancer, Jr.*
The Nolan E. Crane-Joseph &
Beatrice Rothberg Family
Endowment Fund
Mr. and Mrs. James E. Dearing*
John, Barb and Ginna Doyle
Dr. Pepper/Seven Up, Inc.
Mr. Frank Driscoll
Mr. and Mrs. Richard W.
Duesenberg*
Enterprise Holdings
Fred* and Sara Epstein
Express Scripts, Inc.
Mr. and Mrs. Kevin R. Farrell

Kay Fernandez
Mary Ellen Finch
LeRoy Fink*
Mr. and Mrs. William B. Firestone
Earle K. Fleischmann*
Fleishman-Hillard, Inc.
Fox Performing Arts
Charitable Foundation
Miss Georgia Frontiere*
Dave and Agnes Garino
Mr.* and Mrs. David P. Gast
Clifford Willard
Gaylord Foundation
Mr. and Mrs. Leigh Gerdine*
Norman and Susan Gilbert
Ms. Dorothy E. Goebelt*
Paul O. Hagemann*
Hammond Associates
Mr. John M. Harney*
Harvey and Judy Harris
Miss Lucille A. B. Heimbürger*
Robert O.* and Anne W. Hetlage
Doug and Vicki Hill
Mr. and Mrs. Mark Holly
Cheryl Holman
Edwin G. Hudspeth*
Husch Blackwell LLP
Miss Dorothy M. Hyduke*
Dr. Gayle P. W. Jackson and
Dr.* Frederick T. Kraus
Mr. Sanford Jaffe*
Mr. Herman L. Joachim*
Bettie S. Johnson
Marjorie Eddy Johnson
Emil and Mary Karches*
Henry Katz* and Dr. Hildegard
Gruenbaum Katz
Susan and Stuart Keck
Mrs. Elmer G. Kiefer
Mr.* and Mrs. Thomas M. King
Mr.* and Mrs. Charles F. Knight
Dr. Stuart A. Kornfeld
Nancy and Ken Kranzberg
Mr. and Mrs. Jack E. Krueger*
Mr. and Mrs. Kenneth R.
Langsdorf
Mr. and Mrs. Donald E. Lasater*
League of American Orchestras
Karen and Mont Levy
Mr. Tobias Lewin*
Mr. and Mrs. Richard A. Liddy
Mary Lieber
Mr. and Mrs. Keith Lissant
Richard C. Ludmerer
Drs. Dan and Susan Luedke
Dr. Carl and Lynn Lyss
Kenneth R. Mares, PhD
Margaret L. Marin*
Mark Twain Bancshares, Inc.
Mr. Michael Marks
Phyllis and George* Markus
Claire* and Richard Marx
Patricia L. Mayhew*
Dr. and Mrs. John E. Mazuski
Kathryn McCormick*
Mr. John McHugh and

Ms. Becky Brown
Colleen McMillan*
John L. Messmore Fund of
the St. Louis Community
Foundation
Dr. John S.* and LaVerna E.
Meyer
Renée and Bruce Michelson
Mr. and Mrs. Michael H. Moisiso
Anna M. Moll
Mrs. Hubert C. Moog*
Mr.* and Mrs. Vaughan Morrill
John and Elizabeth Morrison
Mrs. Barbara Morriss
Robert and Melissa* Mullgardt
Frances C. Murdock*
Mr.* and Mrs. Don Carr Musick
Gladys H. Myles, The Myles
Family Charitable Fund
of the Greater St. Louis
E. Nakamichi Foundation
Dr. Melanie Newbill
Mr. and Mrs. James L. Nouss, Jr.
Francis J. O'Keefe*
Mr. and Mrs. Emmanuel C.
Paxhia*
Dr. David and Marge* Perkins
Mrs. Helen R. Persons*
Pet Incorporated
Mr. Thomas Pettigrew*
Roy Pfautch
Dr. Dan Phillips and
Dr. Linda S. Horne
David and Adrienne Piston
Frederick Pitzman Fund
Ms. Olga R. Plaisance*
Norman and Josephine
Potashnick*
Mr. and Mrs. Paul Putzel
PwC
Mr.* and Mrs. Melvin Rabushka
Dr. David Riedel and
Ms. Margaret Donnelly
Alice G. Rieder*
Mr.* and Mrs. Jerry E. Ritter
Ritz-Carlton, St. Louis
Mr. David Robertson and
Ms. Orli Shaham
Mr. and Mrs. A. Charles
Roland, III*
Ms. Eddie Rosenheim
Lt. Colonel Kathy and
Major James Runk
Sachs Fund
Dr. and Mrs. Fred
Sassmanshausen*
Steve and Laura Savis
Steven F. Schankman Family
Mr. and Mrs. Gideon H. Schiller*
Mr. Robert J. Schlueter*
Mr. Jon J. Schneeberger*
Mrs. William C. Schock*
Dr. and Mrs. Weldon Schott
Henry* and Esther Schweich
Dr. and Mrs. Richard C. Shaw

Mrs. Robert L. Shifrin*
 Harry M. Siegfried* and
 Monica Minkoff Siegfried
 Sigma-Aldrich Foundation
 Dr. and Mrs. Thomas M. Siler
 Linda* and Stephen W. Skrainka
 Maestro and Mrs.
 Leonard Slatkin
 Susan Slaughter
 Dr. Raymond G. Slavin
 Dr.* and Mrs. Kenneth Smith, Jr.
 Mary E. Smitten*
 Smurfit-Stone Container
 Corporation
 Ms. Virginia C. Sodemann*
 Dr. John Sopuch
 Southwest Bank of St. Louis
 St. Louis Clearing House
 Association
 University of Health Sciences
 and Pharmacy in St. Louis

St. Louis County
 Ms. Gladys C. Stamm*
 Audrey and John Steinfeld*
 Stifel Financial Corp.
 Mr. and Mrs. V. Raymond
 Stranghoener
 Alice* and Warren Stump
 Mr. and Mrs. Warren G. Sullivan
 Surdna Foundation, Inc.
 Ms. Molly Sverdrup*
 Mrs. Margie Talcoff
 Target Stores
 Paul and Patricia Taylor*
 Family Foundation
 Dr. and Mrs.* Lewis J. Thomas, Jr.
 Mark and Sudie Throdahl
 Bernard D. Tischler and
 Jean Schneider
 Ms. Marjorie M. Tooker*
 Towers Watson

Pamela M. Triplett and
 Kenneth B. Denson
 Susan and Peter Tuteur
 UBS Financial Services
 John and Barbara Uhlemann
 UMB Bank
 Union Pacific Foundation
 United Healthcare of The
 Midwest, Inc.
 Jim* and Lois Urnes
 Georgia Van Cleve-Colwell*
 Visa Gold Promotion
 Volvo Cars of North America, Inc.
 Maestro Hans* and
 Mrs. Jessie Vonk
 Mrs. Beverly Wagner
 Mr. and Mrs. John K. Wallace, Jr.
 Mrs. Martha M. Wallin*
 Barbara and David Ware
 Washington University

Washington University
 Physicians
 Mr. Fred J. Wehrle, Jr.*
 Dan and Sarah Wessel
 Mrs. Robert C. West*
 Carolyn L. Whitmore*
 Mr. and Mrs. Harold L. Wilcke*
 Mrs. Emily A. Williams*
 Eugene F. Williams Sr.
 Charitable Trust
 Mr. John T. Williams
 Mr.* and Mrs. Raymond H.
 Wittcoff
 Elizabeth Holloway Woods
 Foundation
 Jim* and Linda Woods
 Dr. Mark Wrighton and
 Ms. Risa Zwerling
 Mr.* and Mrs. Isaac E. Young
 Anonymous (12)

Carolyn Kindle
 Mr. and Mrs. Kris Kosup
 Frank and Leanne Latuda
 George Leighton, Jr. and
 Karen M. Trinkle
 The Reverend Joseph Charles
 Lindell, Jr.
 Mr. and Mrs. Keith Lissant
 Laura and David Margolis
 Mr. John McHugh and
 Ms. Becky Brown
 Robert and Melissa* Mullgardt
 Lynn and David Phillips
 Jeffrey and Deborah Pierce
 Mr. and Mrs. Gerald Potthoff
 Dr. Mabel L. Purkerson
 Dr. David Riedel and
 Ms. Margaret Donnelly
 Ms. Eddie Rosenheim
 John S. Ross
 Lt. Colonel Kathy and
 Major James Runk
 Sammy and Joseph Ruwitch
 Lori and Theodore Samuels
 Marieta Scherer
 Alex Shapiro and
 Raymond Berger
 Mr.* and Mrs. Walter G. Shifrin
 Ray Simon and Mel Pashea
 Robert E. Smorodin and
 Lauren J. B. Shields
 Dr. John Sopuch
 Ann McFarland Sullins
 John H. Summey and
 Rivi Meltzer
 Bernard D. Tischler and
 Jean Schneider
 Mrs. Jane Tschudy
 John Tvrdik
 Mr. Benjamin and
 Dr. Susan Uchitelle
 Mr. and Mrs. James
 von der Heydt
 Phyllis L. Weber
 Dr.* and Mrs. S. William Whitson
 Mrs. Emily A. Williams*
 John and Liesel Winski
 Jim* and Linda Woods
 Dr. and Mrs. Myles A. Yanta
 Libby Yunger
 Anonymous

Crystal Circle
\$3,000-\$4,999
 Mr. Michael Abrams and
 Dr. Rita Numerof
 The Alberici Foundation
 Jack and Laura Anderson
 Timothy and Patricia* Anderson
 Mr. and Mrs.* Mark B. Andrews
 Alyson and Jesse Appleton
 Holly and Marc Bernstein
 June R. Bierman
 Dr. and Mrs. Clifford A. Birge
 Ellen E. Bonacorsi and
 Thomas B. Kinsock

Terese M. Boveri
 Mr. Samuel D. Brown
 Mr.* and Mrs. Don R. Carlson
 Day-Lund Family Charity
 Mr. and Mrs. Charles H. Cobaugh
 Rodney* and Elaine Coe
 Mr. and Mrs. Louis D. Cohen
 Mr. and Mrs. Laurence K.
 Condie, Sr.
 David and Paulina Conner
 Stephen and Ann Cortinovic
 Kevin Counihan and
 Maryanne Hertel
 Dr. and Mrs. Carlos C.
 Daughaday
 Dr. Bruce and Michelle Dawson
 Mr. and Mrs. Tyree C. Derrick, Jr.
 Todd and Debbie Dillon
 Ms. Monty Dixon
 Ellen and Henry Dubinsky
 Elsperman Family
 Jeffrey and Veronica Fernhoff
 Mary Ellen Finch
 Donald and Margie Franz
 Dr. and Mrs. Edward M. Geltman
 Alice Goodman
 Bruce and Kathryn Gordon
 Mike and Marcie Grayson
 Paula E. and Michael L. Gross
 Mr.* and Mrs. Gerard K.
 Gunther, Jr.
 Mrs. William P. Hamilton
 Jack and Kelley Hartnett
 Dr. Cheryl R. Herman
 Mr. and Mrs. James Hoch
 Brian and Kristen Hogan
 Ms. Jeannette R. Huey
 Phyllis Hyken
 Joanne and Joel Iskiwitch
 Dr. Gayle P. W. Jackson and
 Dr.* Frederick T. Kraus
 Dr. Robert and Melissa Jensen
 Bettie S. Johnson
 Dr. and Mrs. Michael Koebel
 Margie and Timothy Kohl
 Nancy and Ken Kranzberg
 Mr. and Mrs. Alex Krupski
 Harriet and Jerrold Lander,
 in memory of Adaline and
 Simon Sonenschein
 Ms. Gerre Langton, Esq.
 Fred and Nancy Lee
 Dr. and Mrs. Frederick C.
 Lewis, Jr.
 Mr. Al Li
 Drs. Dan and Susan Luedke
 Mr. and Mrs. John N.
 MacDonough and
 Mr. Steve MacDonough
 Grace Mandigo
 Kenneth R. Mares, PhD
 Mr. and Mrs.* Edward W. Martin
 Dr. and Mrs. John E. Mazuski
 Jane* and Kent McNeil
 Dr. John S.* and LaVerna E.
 Meyer

Amy and Paul Mittelstadt
 Mr. Larry G. Mrazek
 Drs. Jeanne Nerbonne and
 Andreas Burkhalter
 Bonnie and Stanley L. Paulson
 Philip and Harriet Polster
 Ruth W. Rangel
 Mrs. Marti Reichman
 Dr. Nancy Ridenour
 Richard and Elizabeth* Robb
 Jane M. and Bruce P. Robert
 Dr. and Mrs.* Mitchell B. Rotman
 Mr. and Mrs. George B. Saunders
 Mr. and Mrs. Gideon H. Schiller*
 Mrs. Lucy Schreiber
 Henry* and Esther Schweich
 Charles and Suzanne Seibel
 Ms. Linda Seibert
 Alan and Kim Silverberg,
 in memory of Devorah
 Silverberg
 Linda* and Stephen W. Skrainka
 Mr.* and Mrs. George E. Stein
 Jeff Stokes and Karen Ever
 Stokes
 Georgia Streett
 Mr. and Mrs. Warren G. Sullivan
 Thomas and Johanna Sutterfield
 Dr. and Mrs.* Lewis J. Thomas, Jr.
 Pamela M. Triplett and
 Kenneth B. Denson
 John and Barbara Uhlemann
 Laurie and Ray Van de Riet
 Dr. John L. Visconti
 William E. Wallace and
 Elizabeth A. Fagan
 Barbara and David Ware
 Dr. Stuart* and Marlita Weiss
 Ellen S. White
 Mr.* and Mrs. Isaac E. Young
 Hillard Williams
 Dr. and Mrs. Frank Yin
 Anonymous (5)

Red Carpet Circle
\$1,500-\$2,999
 Gwen E. Adams
 Dr. Susan E. Adams
 Mr. S. William Aitken
 Patrick and Madeline Akins
 Mr. and Mrs. Kenneth Anderson
 Steven M. Arenberg
 Jack and Anne Bader
 John and Dorothy Baker
 Tony Bardol
 John and Gailya Barker
 Harriet Baron
 Mr. and Mrs. Philip H. Barron*
 Rudy and Sandy Beck
 Drs. Earl and Esther Beeks
 Stephen and Sandy Bell
 Dr. Allan and Barbara Bennett
 Mr. and Mrs. Richard A. Berger
 Marcia M. Bernstein
 Dr. Michelle Beumer
 Rick and Judy Beumer

Marian and John Bleeke
 Drs. Nanci and James Bobrow
 James Debman and
 Jane Bolliger-Debman
 Maria Briggs
 Ellen and Dennis Brommelhorst
 Mr.* and Mrs. Roger W. Bucknell
 Rochelle A. Calhoun
 Paul Cambridge and
 Amanda Trudell
 Arlene Caplan
 Dr. Ralph and Dr. Pamela Caraffa
 Anne Carman
 Clarkson and Rita Carpenter
 Dr. John Chick
 Dennis and Mary Lee Chivetta
 Don and Elizabeth Cobin
 Barbara Cohn
 William and Lucy Conley
 Mr. and Mrs. Charles J. Cook
 Mr. Joseph E. Corrigan
 Ian* and Joanne Cruickshank
 Mr. and Mrs. Thomas
 W. Cummins
 Mike and Sue Darcy
 Mr.* and Mrs. Christopher
 Davidson
 Mr. William Diestelkamp
 Lawrence Gerard Dorroh
 Bill and Jane Doub
 Irasa and Kurtis Downing
 Mr. and Mrs. Robert Ducker
 Mary Duncan
 John and Mary Easley
 Ryan C. Easley
 Mr. and Mrs. John E. Easterling
 Christopher Eckrich
 Mr.* and Mrs. John E. Evans, III
 Sara and Darryl* Fabick
 Mary Ferguson
 Julie Maise Ferrie
 Ken Fitzgerald and Ruby Carr
 Joanne and Bill Fogarty
 Mr. and Mrs. William F. Forsyth
 Mr. and Mrs. Robert W.
 Fulstone, Sr.
 Mr. Robert F. Gellman
 Elaine R. Gernstein
 David and Barbara Gifford
 Mr. Mark and Dr. Caroline Gilje
 Andy and Nancee Glaser
 Mrs. Joseph F. Gleason
 Susan C. Glenn
 Mr. and Mrs. Timothy
 R. Goldsbury
 Brad and Debbie Goss
 Mardell Moeller Granger
 Melinda and Doug Groves
 Sonia Guterman
 Dr. Yoram and Yaffa Hahn
 David and Miran Halen
 Mr. Ronald P. Hamel
 Paul W. Hayman
 Philo Holcomb
 Mr. and Mrs. Mark Holly
 Alfred and Marilyn Holtzer

The St. Louis Symphony Orchestra gratefully acknowledges the following donors who supported the annual fund at the Leadership Circle level (contributions through August 31, 2024).

To learn more, contact Richard Kranes-Rutz at 314-286-4480 or richardk@slso.org.

Leadership Circle

\$100,000 or more

James G. and Elizabeth Mannen
 Berges
 Kathleen Clucas
 Mr. and Mrs. Steven L. Finerty
 Nancy Friedland and
 James Florczak
 Ms. Jo Ann Taylor Kindle
 MacCarthy Foundation
 Mr.* and Mrs. Michael Neidorff
 Emily Rauh Pulitzer
 Rex and Jeanne Sinquefield
 Mr. and Mrs. David L. Steward
 Mr. and Mrs. Andrew C. Taylor
 Anonymous (3)

\$50,000-\$99,999

Mr. and Mrs. Barry H. Beracha
 Mr. and Mrs. Walter J. Galvin
 Dr. and Mrs. Nicholas
 T. Kouchoukos

\$25,000-\$49,999

Mr.* and Mrs. Jack Bodine
 Darin B. Groll
 Carolyn and Jay* Henges
 Marjorie M. Ivey
 Lawrence Katzenstein and
 Dr. Cheryl Quinn
 Dr. Stuart A. Kornfeld
 Renée and Bruce Michelson
 Andrew and Lori O'Brien
 George* and Melissa Paz
 Penny Pennington and
 Michael Fidler
 Roy Pfautch
 Mary Pillsbury

Ms. Phoebe Dent Weil
 Mr.* and Mrs. Orrin S.
 Wightman, III
 Mr. Robert L. Williams*
 Anonymous

Grand Circle

\$10,000-\$24,999

David and Melanie Alpers
 Mrs. Bhavani Amirthalingam
 and Dr. Karthik Muthusamy
 The Baldwin Family Fund
 Ted and Robbie Beaty
 Marie-Hélène Bernard and
 Douglas Copeland
 Mr. David A. Blanton, III
 Michael Bobroff and Wendy Olk
 Phoebe and Spencer Burke
 Mr. and Mrs. Paul R. Cahn
 Mr. and Mrs. William G. Cotner
 Stéphane and Åsa Denève
 Susan Eickhoff and Family
 Fred* and Sara Epstein
 Mr. and Mrs. Kevin R. Farrell
 Mr. and Mrs. Scott Ferguson
 Ms. Sue Fischlowitz and
 Mr. David Roberts
 Mr. and Mrs. James G. Forsyth, III
 Jeffrey and Prue Gershman
 Mr. and Mrs. William A. Gilbert
 Dr. Anne Carol Goldberg
 Ronald and Jan Greenberg
 Doug and Vicki Hill
 David and Susan Hutchinson
 Mr. and Mrs. John R. Jordan, Jr.
 Amy Kaiser
 Eugene Kornblum*

Mr. and Mrs. Lawrence E.
 Langsam
 Ned* and Sally Lemkemeier
 Karen and Mont Levy
 Mr.* and Mrs. Lee M. Liberman
 Loren and Ken Ludmerer
 Stephen and Kelly Mackin
 Marcela Manjarrez
 Mr. and Mrs. Michael H. Moisio
 Anna M. Moll
 Isabelle and Jean-Paul Montupet
 Dr. Cora E. Musial
 Gordon and Susie Philpott
 David and Adrienne Piston
 Mr. and Mrs. Paul Putzel
 Mr.* and Mrs. Melvin Rabushka
 Lee and Nancy Reycraft
 Mr.* and Mrs. Jerry E. Ritter
 Allison W. Roberts
 Nancy and Don Ross
 Ann R. Ruwitch and
 John Fox Arnold
 Ms. Bella L. F. Sanevich and
 Mr. Bradley E. S. Fogel
 Steve and Laura Savis
 Dr. and Mrs. Weldon Schott
 Stephen and Janice Seele
 Dr. and Mrs. Thomas M. Siler
 Dr.* and Mrs. Kenneth Smith, Jr.
 Mary Strauss
 Mr.* and Mrs. Alan C. Sunshine
 Mark and Sudie Throdahl
 Susan and Peter Tuteur
 Jim* and Lois Urnes
 Andrea and Peter Van Cleve
 Susan Veidt
 Kate Warne Riggs

Dan and Sarah Wessel
 Mr. and Mrs. James E.
 Williams, Jr.
 Anonymous (2)

Fleur-De-Lis Circle

\$5,000-\$9,999

Barbara and Ernest Adelman
 Liz Armstrong
 Assimo and Costas Azariadis
 Neil* and Patricia Bean
 Pam Belloli and Dave Shimek
 Sam Bertolet and Helen Ziercher
 Leslie* and Jim Bolin
 Cynthia J. Brinkley
 Lee Broughton and
 Chrissy Taylor Broughton
 Elsbeth Brugger and
 Gretchen Vander Meulen
 Patrick and Laura Crowley
 John, Barb and Ginna Doyle
 Mr. and Mrs.* Richard G.
 Engelsmann
 David and Lelia Farr
 Mr. and Mrs. John H. Ferring, IV
 Gordon and Margaret Finley
 Joe and Chris Fleagle
 Drs. J. T. Gates and
 Mary E. Bickel
 Norman and Susan Gilbert
 Mr. Leslie Goodman
 Daniel* and Carol Gravens
 Dr. and Mrs. Jacob J. Harris
 Robert O.* and Anne W. Hetlage
 Lois E. Himpel
 Janet Hyde
 Marjorie Eddy Johnson
 Mr. and Mrs. David W. Kemper

Robert L. and Cynthia A. Hormell
 Dr. Barbra Horn and Dr. Peter Weiss
 Dr. Debra Horwitz
 Dr. Charles B. Huddleston and Dr. Marye Gleva
 Mr. and Mrs. Michael D. Hurst
 Molly Hyland and Curt Ittner
 Susan S. Ittner
 John and Tammy Jennings
 Jen and Gary Jensen
 J. R. Johnson
 Mr. Andrew Jorgensen and Mr. Mark Stuart-Smith
 Patrice and Jeffrey Kaplan
 Byron and Audrey Katcher
 Mr. and Mrs. Mark Keller
 Mrs. Stacey C. Kelley
 Mr.* and Mrs. Newell S. Knight, Jr.
 Roger and Fran Koch
 Stephen E. Kraft
 Sandra Krajcovic
 Fran and Paul Kravitz
 Kristin and Rob Lamprecht
 Mr. and Mrs. Thomas W. Lawrence, Jr.
 Mr. Terry Lay, in memory of Mr. Jerry Boyer
 Benny and Edith Lee
 Linda and Paul Lee
 Dr. Marvin E.* and Barbara Levin
 Michael and Lynne Lippmann
 Mr. and Mrs. Donald Loncaric
 John and Marilyn Lonigro

Dr. Thomas Loughrey
 Lia and Bruce Lowrie
 Dr. Carl and Lynn Lyss
 Mr.* and Mrs. Robert Magnetti
 Aaron and Denise Mandel
 Mr. James Mann and Ms. Janet Nentwig Schoedinger*
 Dr. and Mrs. Stanley Margul
 Sue Matlof
 William J. Maxwell and Julia Walker
 Mr. and Mrs. Matthew P. McCauley
 Mrs. Lesley McIntire
 Dr. William Knowles McIntire
 Brenda K. Melson
 Mr.* and Mrs. John J. Meyer
 Deborah Eldridge Miali
 Mr. and Mrs. Brian Mischel
 Mr. Mark D. Mittleman
 Sherry and Mark Moschner
 Allen* and Jeanette Myers
 Dr. and Mrs. John Nash
 James and Marcia Nusz
 Kiku Obata and Company
 Dr. Olaronke Akintola-Ogunremi
 Dr. Henry and Marcia Ollinger
 Helena O'Reilly and Richard Ulett
 Kathleen T. Osborn, Regional Business Council
 Andrew S. Oster, MD
 Dr. F. Thomas Ott
 Wilma Pasternak
 Scott Patrick
 Marianne L. Perez

Georgia C. Pettus
 Abby and Paul Pietrowski
 Mr. and Mrs. William R. Piper
 Mr.* and Mrs. James T. Poor
 Anthony and Stephanie Randalll
 Kumar and Carrie Rao
 Mrs. M. F. Rao
 John and Susan Rava
 The Rayne Fund
 Donald L. and Meg Riechman
 David R. Riley and Ann Campion Riley
 John and Tamra Routt
 Mr. and Mrs. Philip Roy
 Dr. Mary Anne Rudloff
 Helen Sandifer
 Vicki Sauter and Joseph Martinich
 Alan and Peggy Schaffer
 Mr. and Mrs. James M. Schloeman
 Glen and Julie Schuster
 Henry & Sally Schwartz 2010
 Family Foundation
 Barbara and Joel Schwartz
 Andrew and Megan Selck
 Suzy Seldin
 Jermal and Rachel Seward
 Mark and Jeanne Showers
 Drs. Sherman and Joan Silber
 Mr. Kenneth Simons
 Sherry Sissac
 Dr. Raymond G. Slavin
 Frances and Michael Slusher
 Dr. and Mrs. William S. Sly
 Raymond and Sharyn Steege
 Katerina Barquet Stege

Mr. and Mrs. Daniel Steinmeyer
 Nick and Jaclyn Strothmann
 Tegner M. Stokes
 Dr. Gregory Storch and Dr. Lisa Ring
 Rev. Mark M. Strothmann and Rev. Sharon K. Maddox
 Heather Butler Taylor
 Mary Fathman Thomas
 Dr. Sherida and Dr. Douglas Tollefsen
 Dr. Gary and Mrs. Phyllis Traub
 Dr. Michael Clarke Trueblood
 Benjamin and Emily Tsai
 Mr. and Mrs. W. R. (Rick) Van Bokkelen
 Drs. John C. Vandover and Preeti Dalawari
 Mr. Jim Vykopal and Ms. Christy Beckmann
 J.R. and Mia Walters
 Drs. B. Craig Weldon and Terri Monk
 Mr. Gary John Werner
 Linda and F. Dale Whitten
 Martin Wice
 Elaine Wichmer
 Nancy Enslin Wilson
 Laura Wirick
 Dr. Mark Wrighton and Ms. Risa Zwerling
 Mr. and Mrs. Douglas H. Yaeger
 Mr. George Yeh
 Kathryn Zigler
 Carl and Marjorie* Zimmerman
 Dr. and Mrs. Peter H. Zimmerman
 Anonymous (10)

Edith Grunwald
 Irene and Bob Gulovsen, in memory of William and Beatrice Feldhus
 Mr. Larry J. Gwin
 David E. Hall, in joyful memory of Ricky R. Hall
 Mr. and Mrs.* Edward A. Hamlin
 Mr.* and Mrs. Robert L. Harmon
 Mr.* and Mrs. Whitney R. Harris
 Charles Hasenjaeger
 Mr. Tom Hatchard
 Michael E. and Sherry L. Hazel
 Shirley A. Heiman
 Carolyn Henges and the Jay Henges Charitable Trust
 Christine Henry
 Mr. and Mrs. Paul O. Herrmann, III
 Milton Hieken* and Barbara Barenholtz
 Lois E. Himpel
 Gayla and Arthur Hoffman
 Ann E. Howard
 Ms. Jeannette R. Huey
 Jim* and Genya Human
 Diane M. Hurwitz
 Susan C. Hutchinson
 Marjorie M. Ivey
 Gayle P. W. Jackson
 Dr. Robert and Melissa Jensen
 Rosemary Jermann
 Marjorie Eddy Johnson
 Patricia J. Johnson
 Amy Kaiser
 Susan and Stuart Keck
 Jonathon and Linda Killmer
 Beverly W. Kinkade and Gary F. Sanders
 Mr. Richard Kusnierz and Ms. Kathryn A. Rapp
 Mr. Lawrence E. and Mrs. Hannah S. Langsam
 Karen and Mont Levy
 Kent A. Lewis
 Lynda L. Lieberman
 Mr. Joseph C. Lindell, Jr.
 Dr. and Mrs. David Lovell
 Dave Lucas
 Rita Luddon
 Kenneth R. Mares, PhD
 Dr. Phillip McDaniel and Mr. W. Michael Shirk
 Mr. Michael McGrath
 Dr.* and Mrs. Joseph McKinney
 Mrs. Mary M. Meredith
 James G. and Deborah B. Miali
 James J.* and Dina L. Michael
 Jonathan L. Miller
 Joseph A. Miller
 Mr. Mark D. Mittleman
 Joan and Kenneth* Musbach
 Dr. Cora E. Musial
 David C. Nischwitz
 John J. Oleski

Mr. Michael J. Opitz and Mr. Donald P. White
 Michael C. and Susan R.*
 Orlando
 Mary E. Ozee* and Linda O. Lewis
 Dorothy J. Palisch
 Mrs. Mary E. Pearson
 Dr. David and Marge* Perkins
 L. Susan Pletscher
 Dr. Mabel L. Purkerson
 Eric N. and Sarah Rainwater Ward
 Mrs. Harry E. Raybuck, Jr.
 Thomas R. Robertsen and Wiley E. Martin
 Larry and Jo Ross
 Dr. Mary Anne Rudloff
 Lt. Colonel Kathy and Major James Runk
 Mr. Michael E. Russo
 William C. Rynecki
 Steven F. Schankman Family
 Roger Schlueter
 Mr.* and Mrs. William D. Schneck
 Al and Betty Schneider
 Mrs. Ben Schneiderman
 Cliff Schoep
 Mrs. Lucy Schreiber
 Ruth and Eugene* Schwartz
 Deborah and Edward Schwarz
 Ray Simon and Mel Pashea
 Linda* and Stephen W. Skrainka
 Dr. Raymond G. Slavin
 Frances and Michael Slusher
 Charles G. Smith
 Dr.* and Mrs. Kenneth Smith, Jr.
 Mr. and Mrs. Todd S. Snyder
 Nancy and John Solodar
 Marie F. Speziale
 Mark H. Spurrier, M.D. and Karl A. Koesterer
 Bill and Karen Stebelski
 Teri Steinberg
 Mr. R. Charles Stevens
 Mrs. Ann Still
 Mary Strauss
 Rev. Mark M. Strothmann and Rev. Sharon K. Maddox
 Ann McFarland Sullins
 Ms. Margaret Taylor
 Bob Thompson
 Mrs. Julia Triplett
 Pamela M. Triplett and Kenneth B. Denson
 Nelson Figueroa* and Jeff Truesdell
 Russ and Barb Vanderbeek
 Mr. and Mrs.* Jan Ver Hagen
 Lesley Ann Waldheim
 Thomas C. and Joyce M. Walsh
 J.R. and Mia Walters
 Mr. Robert L. Riggs, Jr.*
 Kate Warne Riggs
 Dave and Bea* Waugh

Ms. Phoebe Dent Weil
 Mr. and Mrs. Joseph Weir
 Mr. and Mrs. Earl Wendt
 Mr. Gary John Werner
 Mr. Dale Whiteside
 Linda and F. Dale Whitten
 Mr. and Mrs.* Michael A. Wick
 Dr. and Mrs.* Patrick R. Wilson
 Sarah V. and Kendall M.* Winter
 Mrs. Marilyn J. Woerner
 Edward H. and Rosemary Young Fund of the St. Louis Community Foundation
 Libby Yunger
 Anonymous (12)

In Memory of Legacy Circle Members:

Dr. Grace B. Adams
 Mr. Stephen Adams
 Ms. Gladys H. Aguado
 Ms. Dorothea H. Allen
 Elaine F. Allen
 Mr. Edward Z. Andalaft
 Mr. and Mrs. Frederick S. Anheuser
 Arthur and Jeanne Ansehl
 Ann and Paul Arenberg
 Ms. Margaret M. Arnold
 Mr. Maurice D. Artstein
 Mr. Richard Ashburner
 Miss T. C. Atherton
 Ms. Marilyn A. Bacon Scott
 Mr. and Mrs Melvin C. Bahle
 Ms. Carole E. Bailey
 Mrs. Gordon Bamesberger
 Ms. Constance Baur
 Mr. J. Thomas Bear, Jr.
 Mr. and Mrs. Gene K. Beare
 Dr. Nora Beiswenger and Mr. John R. Norris
 Catherine B. Berges
 Mr. Donald H. Bergmann
 Ella M. Bettinger
 Mr. Andrew Bettman
 Mr. Lewis Bettman, III
 M. C. Beyerstedt
 Sarah Lee Boggs
 Lillian B. Boly
 Kathryn Smith Bowers
 Mr. Dudley A Bragdon, II
 Mrs. Julia K. Bramman
 Mrs. Virginia M. Briggs
 Mr. and Mrs. Ernest L. Brinner
 Mr. and Mrs. Robert A. Brod
 Ms. Mary A. Bruemmer
 Katherine "Kitten" Burg
 Robert Burg
 Mrs. Gaylord Burke
 Sue D. Burklund
 Vernice and Paul Cassimatis
 Miss Adelaide Cherbonnier
 Gilbert R. Cherrick, MD
 Audrey E. Claus
 Lucian R. Cohen Revocable Trust

Mr. and Mrs. Edson Cooke
 Ellen C. Cooley
 Ms. Wanda E. Cooper
 Joyce Corey, PhD
 Dr. Fred A. Coutts
 Eldon and Florine Cox
 Family Foundation
 Michael W. and Martha Cramer
 Marian Bettman Cronheim
 Dr. Margaret Crumpacker, MD
 Mrs. Dorothy M. Cuendet
 Mr. and Mrs. Henry P. Day
 Dorothy Doty
 Miss Irene L. Dulin
 Carolyn R. Duncan
 Joycelyn C. Duncan
 Shirley Gage Durfee
 Mr. James L. Eagan
 Mrs. Ernest A. Eddy, Jr.
 Mrs. Rosette Ellman
 Leroy and Peggy Erickson
 Essman Family
 Charitable Foundation
 Mr. and Mrs. David C. Farrell
 Ms. Mary P. Faust
 Kay Fernandez
 LeRoy Fink
 Mr. Joseph T. Finnigan
 Mr. Vernon W. Fischer
 Laura Brock Fisher and Robert Lee Fisher
 Earle K. Fleischmann
 Mr. Alfred Fleishman
 Dr. Norma Fletcher
 Hal and Doris Flowers
 Ms. Lucille E. Fuetterer
 Mr. and Mrs. John R. Galloway
 Mr. Gilbert Getz
 Ms. Emma M. Giger
 Dr. Sylvia Ginsparg
 Mrs. Marjorie R. Glass
 Ms. Dorothy E. Goebelt
 Esther Goff
 Mrs. Maxine Goldenhersh
 Mr. Samuel R. Goldstein
 Mrs. Sam I. Golman
 Miss Helene Gonska
 Mr. Stanley J. Goodman
 Barbara Grace
 Mrs. W. L. Hadley Griffin
 Margaret Blanke
 Grigg Foundation
 Mr. Eugene E. Guttin
 Paul O. Hagemann
 Orvid G. Halane Trust
 Ms. Catherine A. Haley
 Mr. Charles P. Hamill
 William C. and Audrey K. Hammann
 Mr. John M. Harney
 Jane Freund Harris
 Dr. Slayden Hunt Harris
 Mr. and Mrs. Harvard K. Hecker
 Miss Lucille A. B. Heimbürger
 Ms. Juanita G. Helmich

Legacy Circle

The St. Louis Symphony Orchestra gratefully acknowledges the following donors who have provided for the future of the SLSO through a bequest commitment or a life income gift (names current as of September 30, 2024). For more information about joining the Legacy Circle, please contact Jaclyn Stewart-Strothmann at 314-286-4190 or jaclyns@slso.org.

Legacy Circle Members:

Mr. Michael Abrams and Dr. Rita Numerof
 Gwen E. Adams
 Dr. Susan E. Adams
 Mr. Francis M. Austin, Jr. and Virginia V. Weldon, MD*
 Mr.* and Mrs. Richard L. Aversa
 Christy Beckmann and Jim Vykopal
 Stephen and Sandy Bell
 Barbara M. and Barry H. Beracha
 James G. and Catherine B.* Berges
 Dennis and Judy Berman
 Marie-Hélène Bernard
 Mr. Robert A. Bilzing
 Mr. David A. Blanton, III
 Dr. Michael Bleich

Mr.* and Mrs. Jack Bodine
 Ida Boehlow
 Dr. James Bollinger and Mrs. Jane Bollinger-Debnam
 Richard* Brasington, MD and Kathleen M. Ferrell
 Mr. and Mrs. James A. Braun
 Joan T. Briccetti
 Paul A. Brockland
 Anatole* and Jacqueline Browde
 Elsbeth Brugger and Gretchen Vander Meulen
 Phoebe and Spencer Burke
 Bill Burns, in memory of Margaret "Sally" Burns
 Deb and Jerry Callahan
 Mark Cereghino
 Rabbi Stephen & Dr. Steven Chicurel-Stein
 Dawn Christoffersen and Jared Minkoff

Theresa Ciccolella
 Mary K. Clucas
 Ann M. Corrigan
 Mr. Joseph E. Corrigan
 Mr. John E. Cox
 Dr. and Mrs. James P. Crane
 Thomas J. and Judith A. Crouch
 Ian* and Joanne Cruickshank
 Thomas W. and Mary Jo Cummins
 Mr. Timothy Cusick
 Mr. and Mrs. Thomas P. Danis
 Dr. and Mrs. Carlos C. Daughaday
 Ms. Diane E. DeBaets
 Ms. Monty Dixon
 Bill and Jane Doub
 Rita W. and William B.* Eisman, Jr.
 Beverly Brooke England

Sara and Darryl* Fabick
 Mr. Alan R. Fiddleman
 Ryan J. Finke and Genevieve T. Knab
 Felicia Foland and Kati Guerra*
 Sam and Marilyn* Fox
 Ms. Mary Jane Fredrickson
 Dr. and Mrs. Charles Furfine
 Mr.* and Mrs. Edmond A. B. Garesche, III
 Mrs. Judith Garfinkel
 Mr.* and Mrs. David P. Gast
 Mr.* and Mrs. Donald B. Gerber
 Deborah and Gary* Godwin
 Rabbi Jay B. Goldberg, in loving memory of Erika A. Goldberg
 Mardell Moeller Granger
 Mike and Marcie Grayson
 Elizabeth A. Greer
 Margaret Blanke
 Grigg Foundation

Mr. William G. Hengehold
Mr. and Mrs. Ralph A. Herzmark
Ms. Phyllis Heyssel
Ms. Alice L. Hillebrand
Mr. Miles A. Hinton
Mr. William M. Hissey
Mr. Robert F. Hites
Mr. and Mrs. Arthur K. Howell, Jr.
Edwin G. Hudspeth
Miss Dorothy M. Hyduke
Mr. and Mrs. Robert F. Hyland
George H. Hiram
Mrs. Robert R. Imse
Mr. Sanford Jaffe
Mrs. T. Frank James, Jr.
Charles and Catalina Jamieson
Veljko Jellech
Mr. Herman L. Joachim
Ms. Mildred Joeckel
Dr. Ann J. Johanson
Ms. Carolin Johnson
Mrs. Marianne H. Jones
Lillian Todd Juenger
Rosemarie Kalicak
Emil and Mary Karches
Ms. Mary L. Kilmer
Mary Janet Kinsella
Mrs. Rosemarie Kirchoefer
Engelbert and Barbara Knaus
Robert W. M. Kohlsdorf
Dr. and Mrs. W. R. Konneker
Mr. Alfred Korn
Mrs. Beatrice Kornblum
Mr. Michael S. Kramer
Mr. and Mrs. Jack E. Krueger
Mrs. Mary Lais
Mary and Oliver Langenberg
Barbara L. Lanman
Margaret S. Lanman
Sharon and Byron Lapin
Ms. Amy K. Lears
Mr. and Mrs. E. Desmond Lee
Ms. Mary J. Lee
Robert and Marilyn Leinberger
Ms. Nehoma Lerner
Karen T. Levine
Mr. and Mrs. L. Max Lippman, Jr.
Ms. Estelle A. Loeb
Lucy Lopata
Mrs. Charles W. Lorenz
Ms. Susan A. Lovelace

Paul and Ann Lux
Mrs. Frank Mader
Ms. Jane Mahon
Helen A. Mardorf
Ms. Carola Margraf
Margaret L. Marin
Malcolm W. Martin
Ms. Mildred L. Mattes
Patricia L. Mayhew
Mr. Enos McClure
Kathryn McCormick
Lorette E. Medart
Dr. and Mrs. Gerald Medoff
Mr. and Mrs. Edwin Meissner, Jr.
Dr. William D. Merwin
Mr. and Mrs. Arthur C. Meyers, Jr.
Mr. and Mrs. Jefferson L. Miller
Sarah Bryan Miller
Mrs. William Scott Miller
Ms. Maurine M. Miligan
Jacqueline L. Mines
Shirley A. Mittleman
Mr. Alfred F. Moeller, Jr.
Ms. Gertrude K. Mueller
Ms. Loretto Mullen
Frances C. Murdock
Mrs. Gladys H. Myles
Mrs. Norma Nelson
Mr. John F. Norwood
Richard L. O'Bosky
Mrs. Roland O'Bryen
Francis J. O'Keefe
Mrs. Henry E. Oppenheimer
Mrs. Jules B. Orabka
John R. Overall
Dr. Robert C. Packman
Ms. Margaret Pape
Mrs. Helen R. Persons
Mr. Thomas Pettigrew
Stella Cartwright Pettus
Ms. Eileen Pfeifer
Ms. Olga R. Plaisance
Frank J. Pollnow, Jr.
Mr. and Mrs. Philip B. Polster
Norman and
Josephine Potashnick
Mr. and Mrs. Ed Preston
Dr. Anne E. Price
Margot Prinz
Genevieve Radermacher
Mr. Richard A. Radtke

Mr. Joseph V. Ragni
Jean L. and Charles V.
Rainwater, III
Jane Crow Dillmann Reddy
Mr. and Mrs. Sigmund
M. Redelsheimer
Elizabeth R. Reinhardt
Mrs. Betty J. Richardson
Alice G. Rieder
Mr. and Mrs. Samuel
Rosenbloom
T. Marshall Rousseau
Carol Anita Sagner
Mr. Fred M. Saigh
Ms. Margaret Salomon
Mr. Randall Sanger
Mrs. Virginia Sassmanshausen
Dr. Robert W. Schaefer
Dr. Samuel E. Schechter
Ms. Aurelia G. Schlapp
Ms. Dorothy Schlensker
Mr. Robert J. Schlueter
Mr. Jon J. Schneeberger
Ms. Elizabeth Schneithorst
Victor and Mitzie Schroeder
Janet Schulz and Robert L.
Openlander
Catherine H. Schumann
Ms. Melba S. Seay
Ms. Carol Seligman
Pearl M. Seymour
Mr. Norman J. Shapiro
Ms. Catherine Shelton
Mr. and Mrs. Thomas W.
Shields
Mr. and Mrs. Edwin Simon
Dr. and Mrs. Richard G. Sisson
Mrs. Geraldine Epp Smith
Lee and Carl Smith
Ms. Margaret Smith
Mrs. Robert F. Smith
Mary E. Smitten
Ms. Virginia C. Sodemann
Richard and Irene Sokol
Ellen W. Spitz
Ms. Gladys C. Stamm
Audrey and John Steinfeld
Mr. Wesley Quayle Stelzriede
Mrs. Lorayn P. Strauss
Ms. Elvera Stuckenberg
Mr. and Mrs. Richard S.
Summers

Ms. Molly Sverdrup
Daniel Talonn
Yolanda N. Taylor
Evelyn Terrall
Ms. Julia W. Terry
Ms. Phyllis Tirmenstein
Ms. Marjorie M. Tooker
Mrs. Grace M. Tripp
Ms. Frances P. Troemel
Mr. and Mrs. H. Edwin Trusheim
Margaret Tumiami
Douglas B. Turner, Jr.
Dr. H. P. Venable
Ms. Florence S. Voelker
Eleonore von Kern Nelson
Mr. Ervin Walker
Mrs. Hoyt R. Wallace
Mrs. Martha M. Wallin
Mr. William Warmbold
Reverend R. Donald Weaver
Miss Grace Weber
Mr. Fred J. Wehrle, Jr.
Mrs. Michael Weigert
Mr. and Mrs. Robert S.
Weinstock
Mr. and Mrs. Ben H. Wells
Ms. Mary Elizabeth Wesley
Mr. Louis Westheimer
Ms. Doris B. Wheeler
Ms. Signe Whitelaw Myles
Carolyn L. Whitmore
David G. Wiegert
Mrs. Homer C. Wieser
Mrs. Harold L. Wilcke
Donna Wilkinson
Mr. Robert L. Williams
Patricia Williamson
Elizabeth E. Wilson
Harry B. Wilson
Mr. and Mrs. James E. Wilson
Mr. Louis P. Wingert, Jr.
Mr. Howard H. Witsma
Ms. Alice Wittkopf
Edmund Woodbury
Ms. Marion C. Wyers
Dr. Richard D. Yoder
Beth Zion Foundation
Mr. and Mrs. William A. Zukoski
Anonymous (23)

In Honor Of

Mary Balmer, Anne Marie Block, and Elaine Wichmer
Julie Ferrie

Christopher Bassett
Dr.* and Mrs. Kenneth Smith, Jr.

Marie-Hélène Bernard
David Hodges
Mr. and Mrs. Joel Shedlofsky

Harold Blatt's birthday
Andrea and Peter Van Cleve

Melissa Brooks
Dr.* and Mrs. Kenneth Smith, Jr.

Rev. Jason Bryles
Andy Waggoner

Maureen Byrne
Steven and Avigail Rosenzweig

Micaela Chyu and Youth Orchestra
Dr.* and Mrs. Kenneth Smith, Jr.

Nicholas B. Clifford
Charles and Andrea Miller

Charles and Barbara Cook
happy holidays
Paul and Judy Putzel

Joel Dauve
Victoria & Iñigo Iturri

Stéphane Denève – Carmina Burana concert
Dr.* and Mrs. Kenneth Smith, Jr.

Debbie Dillon
Mr. and Mrs. Larry Reimelt

Ms. Jelena Dirks and Mr. Aaron Sherman
Dr.* and Mrs. Kenneth Smith, Jr.

Dr. James Feigenbaum
Loren and Ken Ludmerer

Steven and Linda Finerty
Brian and Kristen Hogan

Terry and Marjorie Franc
happy holidays
Paul and Judy Putzel

Dr. Vicki Fraser's Foundation for Barnes Jewish Hospital honor
Loren and Ken Ludmerer

Sam and David Furst's anniversary
Hollie Smith

David and Alice Galt
Ellen Svenson

To Grandma - Merry Christmas, Love Morgan and Tyler
Hareth McNally

Dr. Maged Haikal's daughter's marriage
Drs. Sherman and Joan Silber

Elana Hammann and The Youth Orchestra
Anna and Scott Hammann

Jane Hense
Jennifer and Brett Moorehouse

Carli Howe my sweet wife
Jackson Howe

Michaela Hunt
Kat Newbold

Marjorie Myles Ivey
Nancy Schmidt and James White
Luci White

Wilson Jaroch
Fred and Carol Kramer

Lawrence Katzenstein's NAACP Hartman Axley Lifetime Service Award
Loren and Ken Ludmerer

David Kim
Christopher and Grace Mandigo

Eva Kozma
First Presbyterian Church

Cindy Lane's birthday
Dr. Joseph Lane

Mr. and Mrs. Don G. Lents' Harris Frank Community Service Award
Loren and Ken Ludmerer

Barry Mandel's birthday
Sally Rosenthal

Adam Maness
Dr.* and Mrs. Kenneth Smith, Jr.

Marcela Manjarrez's birthday
Patricia Galli
Marta Varga
Sara Weaver

Kevin McBeth
Brenda Stobbe

Stephen and Jane Mitchell
happy holidays
Paul and Judy Putzel

Robert O. Mottl
Martha Thierheimer

Jay L. Nouss, Jr.'s 70th birthday
Andrea and Peter Van Cleve

Julie Plax happy holidays
Paul and Judy Putzel

Hava Polinsky
Joseph and Beverly Schraibman

Tom Puch
Henry Puch and Barbara Enneking

Judy and Paul Putzel
happy holidays
Charles and Barbara Cook

Jonathan Randazzo
Dr.* and Mrs. Kenneth Smith, Jr.

Bjorn Ranheim
Dr.* and Mrs. Kenneth Smith, Jr.
Mrs. Nell Redhage

Mr. Charles Redd's 70th birthday
Lawrence Katzenstein and Dr. Cheryl Quinn
Ryan Easley

Jonathan Reycraft
Dr.* and Mrs. Kenneth Smith, Jr.

Ann Ruwitch and John Fox
Arnold happy holidays
Paul and Judy Putzel

Sammy and Joseph Ruwitch
happy holidays
Ann Ruwitch and John Fox Arnold
Paul and Judy Putzel

Jean Schneider and Bernie Tischler's marriage
Mrs. Diane Freyman

Erin Schreiber
Michael and Katherine Sanders
Eric and Linda Schreiber
Dr.* and Mrs. Kenneth Smith, Jr.

Steve and Janice Seele's salon event
Elizabeth Crosby

Leonard Slatkin's Concordia Seminary presentation
Mr. and Mrs. Joel Shedlofsky

Leonard Slatkin and the jazz series
Dr.* and Mrs. Kenneth Smith, Jr.

Marjorie Smith's 90th birthday
Mr. and Mrs. George B. Saunders

St. Louis Symphony Orchestra Library - Katie Klich, Henry Skolnick, Amanda Tallant
Elsbeth Brugger

St. Louis Symphony Orchestra
Neve Shalom

Amanda Stewart
Dr.* and Mrs. Kenneth Smith, Jr.

Kelsey Templeton
Elsbeth Brugger

Wedding anniversary of the Touhills
Harvey and Leanne Schneider

Shannon and Joseph Vaglio, Jr.'s wedding
Leo and Sandra Eckert

Virginia V. Weldon, MD and Mr. Francis M. Austin, Jr.
Mr. John A. Kramer, Jr. and Mr. Jon McBride

Ellen White happy holidays
Paul and Judy Putzel

Frank and Grace Yin
Greg Yin

In Memory Of

Edwin Abbett
William and Christina Hansen

**Charles C. Allen, Jr. and
Cynthia H. Allen**
Charles Allen and Lisa Schlesinger

Victoria and Roger Altvater
Echo Valley Foundation

Beverly J. Baron
Loren and Ken Ludmerer

Carl and Nancy Barthold
Thomas and Laurie Barthold

Marilyn Beabout
Frances Tietov and Elliot Elson

Terrence M. Beiter
Nancy Beiter
Tracy Gedris
William Hardebeck
Peckham Guyton Albers &
Viets, Inc.
Dr. Becky Shelton
Jess Usery
Max and Carol Waggoner

Becky Browne
Luise Hoffman

Judy Brust
Laura Wirick

Tom Burkemper
Steve and Avi Rosenzweig

Mark L. Burkhart
Lynn Burkhart

Nicholas Clifford
Caroline Foster
Katharine Smith

Nicholas Clifford, Sr.
Marcelo Rentz Ribeiro

Nancy Damelin
Steven and Avigail Rosenzweig

Karen Dirks
Robert and Marilyn Bennett
Elsbeth Brugger
Chris Carson and
Deborah Bloom
Dr. Peter Henderson
Marilyn Johnson
Lee Kessler
Eva Kozma
Jennifer Nitchman and
Nick del Grazia
Jean Schneider
Eliot Sherman

Tena McCoy Dorroh
Lawrence Dorroh

Fred Ehrstein
Kenneth Diekemper
Richard and Peggy Doyle
Keith Gaertner
Carrie Sanders
Kenneth and Emily Wilson

Rosemary Ehrstein
Maxim Jakovac

Larry Essmann
Rebecca Light

Debby Gordon
Loren and Ken Ludmerer

Dr. Martin Gordon
Loren and Ken Ludmerer

Orvid and Athie Halane
Richard and Sherilyn Berger

Dorothy Hill
Carolyn Hill

Billie Hoelscher
Emily Lovell

W.F. Samuel Hopmeier
Harvey and Leanne Schneider

Edith Houglund
Scott and Anna Hammann

Morris Jacob
Elsbeth Brugger
Lorraine Glass-Harris
Peter Henderson
Carolyn White

**Lesley Anne (Cherbonnier)
Knowles**
Dr. William Knowles McIntire

Eugene Kornblum's birthday
Carole Simon

Michael Kowalkowski
Henrik Kowalkowski

Bella Lagoviyer
Alex and Karen Boesch

Arthur Litz
Kenneth and Maxine Goldstein
Harvey and Leanne Schneider

Barbara Mahoney
Loren and Ken Ludmerer

Bobbie Marks
Charles and Karen Elbert

Eleanor Martin
Alice Martin

Loren Moceri
Kenneth and Maxine Goldstein

Carolyn Mulcahy
Evelyn Archer

Patricia O'Day
Edward O'Day

Julia Oyen-Keller
Gary and Jen Jensen
Phillip Tempel

Gwen Peiper
Marvin and Margaret Bleem

Jerry and Romaine Peterson
Jeri Peterson

Eric Polt
Laurie Nest

Martha Ruiz
Randall Bentele

Andrew V. Saigh
Susan Carpenter

Carl R. Scheske
Carolyn Scheske

Geraldine P. Schiller
Elaine Gernstein
Margie Talcoff

Dian Chandler Schock
Robert and Madeleine Cole
Emily Martens

John Sharockman
John Sharockman

Daniel Shea
Kathleen Williams

R. Lowell Smith
Phyllis Evans

Dr. Kenneth R. Smith, Jr.
William and Nancy Burchfield
Alan Fiddleman
Robert and Kathryn Fulstone
Michael and Emily Grady
Anne Hetlage
Arthur and Gayla Hoffman
Robert and Susan Hoffman
Judith King
Nicholas and Judith Kouchoukos
Don Kummer and
Ilissa Staadeker
Lawrence and Hannah Langsam
John McHugh and Becky Brown
Jim and Kelly Moore
Rena Murphy
David Nischwitz
Ann Sullins
The Executive Board of
the Symphony Volunteer
Association - Debbie Dillon,
Martha Duchild, Patty Kaplan,
Jim Moore, and Suzanne Seibel
Eliot Sherman
Jennifer Shifrin
Ann Sullins
Thomas and Cynthia Woolsey
Constance Zimpfer

Elisabeth Stern
Loraine Batch
Carol Gast
Ellen Sovern

Virginia Sue Taylor
Elsbeth Brugger
Steve Ehrlich
Karen Noss
Madelon Price
Ron Ramspott
Dennis Shaw
Sharon Silver
Holly Swift
Frances Tietov and Elliot Elson
Cyndi Woollard

Drew Thompson
Charles and Lisa Kircher
S.J. Braddock

Selden Y. Trimble, IV
Selden Trimble

Doris Halbert Wallace
Hoyt Wallace

Virginia V. Weldon, MD
Felicia Foland
Frank Hamsher and
Peggy Guest
Kimberly Perry
Jennifer T. Shifrin

Robert Lee "Bob" Williams
Elaine Wichmer

Wilma B. Wilson
Carol Wilson

Dr. Dolores Jean Paskar Wolff
Thomas and Merry Dahms

Edwin Wolfgram
Tom Barkman
Maxine Buhr
Brian Elsesser
Stephen Layton
Julie Lazaroff
Barbara Rocarek
Bruce and Lily Seymour
Michael Shipley
John Sweet
JoAnn and Russell Treptow
Loretta Treptow
Weirick Family Fund
James and Barbara Willock
Howard and Dorothy Wolfgram
Joyce Wolfgram

Institutional Support

\$100,000 and above



Edward Jones



Crawford Taylor Foundation
Enterprise Holdings
Margaret Blanke Grigg
Foundation
MacCarthy Foundation
William R. Orthwein, Jr.
and Laura Rand Orthwein
Foundation
Pershing Charitable Trust
The Saigh Foundation
Tynewald Foundation
The Whitaker Foundation

\$50,000 to \$99,999



E. Reuben and Gladys Flora
Grant Charitable Trust
Mary Ranken and Ettie A.
Jordan Charitable Foundation

\$25,000 to \$49,999

Ameren
Aon
Argent Capital Management
Gertrude and William A.
Bernoudy Foundation
BSI Constructors
JCA Charitable Foundation
William T. Kemper Foundation
The Kennedy Family &
Fraiche Wine Group
The Thomas A. Kooyumjian
Family Foundation
Kuhn Foundation
National Endowment for the Arts
Ed & H. Pillsbury Foundation
Michael Staenberg and the
Staenberg Family Foundation
Thompson Coburn LLP
Edward H. and Rosemary
Young Fund of the St. Louis
Community Foundation

\$10,000 to \$24,999

American Direct Marketing
Resources, LLC
Commerce Bank
Drury Hotels
Edison Family Foundation
Edward Chase Garvey
Memorial Foundation
Employees Community Fund
of Boeing St. Louis
Kaldi's Coffee
Kranzberg Arts Foundation
Frank Leta Automotive Family
Lodging Hospitality
Management
Mercer
OPA Foundation
Reinsurance Group of America
St. Louis Trust Company
Washington University
Physicians
Harlene and Marvin
Wool Foundation
Suzanne Feld Zalk
Charitable Trust

\$5,000 to \$9,999

Benefit Bump
G.A., Jr. and Kathryn M. Buder
Charitable Foundation
Caravus
Aaron Copland Fund for Music
Eddie's Southtown Donuts
Rubin and Gloria Feldman
Family Educational Institute
The Fletcher Jones Foundation

Gateway Metro Federal
Credit Union
Graybar Foundation
Hogan Transportation
Companies
KPMG, LLC
John L. Messmore Fund of
the St. Louis Community
Foundation
Moneta Group Charitable
Foundation
Northern Trust
Wipfli

\$2,500 to \$4,999

Brookfield Properties dba
Plaza Frontenac
ESCO Technologies Foundation
Frank A. and Alpha H. Ruf Fund

\$1,500 to \$2,499

GadellNet
Harris-Newman Fund of
Women's Auxiliary Foundation
for Jewish Aged, a supporting
foundation of Jewish
Federation of St. Louis
Harvey Kornblum Foundation
George K. and Marjorie
McCarthy Robins Fund of
the St. Louis Community
Foundation
St. Louis Community College
Symphony Lecture Series

In Memoriam

We honor the members of our board and advisory council who passed away this year. They supported the SLSO through their leadership, dedication, and generosity.



Virginia Weldon

Virginia V. Weldon

A trailblazer in the field of pediatric medicine and science, Dr. Virginia "Ginny" Weldon was elected to the SLSO Board in 1992 and served as Chair from 2000 to 2005. Her fundraising efforts put the SLSO on the path of financial stability, leading us into an era of long-term sustainability. Weldon was also instrumental in securing the SLSO's artistic future, attracting David Robertson to serve as the SLSO's 12th Music Director. After her Board Chair tenure, Weldon was named an Honorary Trustee, and she remained engaged as a concertgoer and advisor.



Bob Williams

Robert L. Williams

A dedicated employee of American General Life Insurance for his entire career, Robert Lee "Bob" Williams was a staunch supporter of the SLSO, serving on the Advisory Council for a number of years.



Gene Kornblum

Eugene Kornblum

As president of St. Louis Music Inc., Eugene "Gene" Kornblum grew his family's business into one of the country's premier musical instrument companies. Kornblum devoted himself to furthering the arts in St. Louis and was an active member of the SLSO's Board of Trustees.

Music for All: The Campaign for the St. Louis Symphony Orchestra Honor Roll

The St. Louis Symphony Orchestra gratefully honors our donors for their remarkable leadership and generosity.

Visionaries

Emily Rauh Pulitzer
Crawford Taylor Foundation

Grand Benefactors

The Berges Family Foundation
Amy Kaiser
Rex and Jeanne Sinquefield
Mr. Howard H. Witsma*

Major Benefactors

Anonymous
The Bellwether Foundation, Inc.
Edward Jones
The Carolyn and Jay Henges Charitable Trust
William T. Kemper Foundation
Dr. and Mrs. W. R. Konneker*
The People of Missouri
Mr.* and Mrs. Michael Neidorff
The Eric P. & Evelyn E. Newman Foundation
Pershing Charitable Trust
Ms. Phoebe Dent Weil

Benefactors

Barbara M. and Barry H. Beracha
Lilian B. Boly*
The Steve And Linda Finerty Family Foundation
Nancy E. and Walter J. Galvin Interco Charitable Trust
Lawrence Katzenstein and Dr. Cheryl Quinn
Dr. and Mrs. William S. Knowles*
Nicholas and Judith Kouchoukos
Lawrence and Hannah Langsam
Karen and Mont Levy
Loren and Ken Ludmerer
Richard Ludmerer
Sarah Bryan Miller*
Andrew and Lori O'Brien
Penny Pennington and Michael Fidler
The Saigh Foundation
Ray Simon and Mel Pashea
Mark and Sudie Throdahl

Leaders

Anonymous (2)
Ameren Corporation
Mr. Francis M. Austin, Jr. and Virginia V. Weldon, MD*
Mr. and Mrs. W. Randolph Baker
Gertrude and William A. Bernoudy Foundation
Mr. David A. Blanton, III
BSI Constructors
Mr. and Mrs. Paul R. Cahn
Rabbi Stephen & Dr. Steven Chicurel-Stein
Kathleen Clucas
Mr. and Mrs. Thomas P. Danis
Mr.* and Mrs. Leo Drey
Mr. and Mrs. Norman L. Eaker
Mr. and Mrs. David C. Farrell*
Alison and John H. Ferring
Deborah and Gary* Godwin
David and Jennifer Grossman
Mr.* and Mrs. Sidney Grossman, Jr.
Skip and Karen Grossman
Harvard & Patricia Hecker Charitable Trust
Jeannette R. Huey
Ms. Dorothy J. Kelley*
Dr. Stuart A. Kornfeld
Nancy and Ken Kranzberg
Stephen and Kelly Mackin
Mr. and Mrs. Edwin B. Meissner Jr.*
Isabelle and Jean-Paul Montupet
Dr. Robert C. Packman*
Louis W. Riethmann, Jr. Foundation
Allison W. Roberts
John R. Roberts
Nancy and Don Ross
Neal and Jayne Schroeder
Steve and Janice Seele
Mr.* and Mrs. Walter G. Shifrin
Mary E. Smitten*
Linda Lewin Stark
Kate Warne Riggs
Dan and Sarah Wessel
Mr.* and Mrs. Orrin S. Wightman, III

Patrons

Anonymous (2)
Elaine F. Allen*
The Baldwin Family Fund
Ms. Constance Baur*
Dr. Nora Beiswenger* and Mr. John R. Norris*
Pam Belloli and Dave Shimek
Marie-Hélène Bernard and Douglas Copeland
Phoebe and Spencer Burke
Anne Carman
William and Lucy Conley
Joseph E. Corrigan
Todd and Debbie Dillon
John, Barb, and Ginna Doyle
Ellen and Henry Dubinsky
Carolyn R. Duncan*
Mr. and Mrs. Kevin R. Farrell
Mr. and Mrs. James G. Forsyth, III
George H. Hiram*
Norman and Susan Gilbert
Brad and Debbie Goss
David and Jill Grace
Mike and Marcie Grayson
Darin B. Groll
Bruce and Nedra Hecker
Robert O.* and Anne W. Hetlage
David and Susan Hutchinson
Molly Hyland and Curt Ittner
Joanne and Joel Iskiwitch
Marjorie M. Ivey
John and Tammy Jennings
Patrice and Jeffrey Kaplan
Ward and Carol Klein
Eugene Kornblum*
Ned* and Sally Lemkemeier
The Reverend Joseph Charles Lindell, Jr.
Drs. Dan and Susan Luedke
Paul and Ann Lux*
Mr. James Mann and Ms. Janet Nentwig Schoedinger*
Mr. John McHugh and Ms. Becky Brown
Jane* and Kent McNeil
Dr. and Mrs. Gerald Medoff*
Dr. William D. Merwin*
Deborah Eldridge Miali
Jaqueline L. Mines*

Mark and Sherry Moschner
Douglas R. Myles*
Janet Schulz and Robert L. Openlander*
Dorothy J. Palisch
David and Adrienne Piston
Philip and Harriet Polster
Mr. and Mrs. Gerald Potthoff
Susan Pribble
Dr. Mabel L. Purkerson
Paul and Judy Putzel
Mrs. Harry E. Raybuck, Jr.
Mr.* and Mrs. Jerry E. Ritter
Beth and Jay Rogers
Steven and Avi Rosenzweig
Joseph Rousseau*
Ann R. Ruwitch and John Fox Arnold
Thomas and Katherine Ryan
Steve and Laura Savis
Michael and Susan Scully
Charles and Suzanne Seibel
Martha Senior*
Rick and Carol Short
Drs. Sherman and Joan Silber
Dr. and Mrs. Thomas M. Siler
Sherry Sissac
Dr.* and Mrs. Kenneth Smith, Jr.
Nora Stern
Mary Strauss
Dr. Donald M. Suggs
Ann McFarland Sullins
Ms. Phyllis Tirmenstein*
John and Jodi Tvrdik
Ben and Susan Uchitelle
Jim* and Lois Urnes
U.S. Bank Foundation
Andrea and Peter Van Cleve
Susan Veidt
Eleonore von Kern Nelson*
Carolyn L. Whitmore*
Edmund Woodbury*
Dr. and Mrs. Frank Yin
Libby Yunger

Friends

Anonymous (5)
Timothy and Patricia* Anderson
Joseph and Linda Apicello
Steven M. Arenberg
Jack and Anne Bader
Stephen and Sandy Bell
Holly and Marc Bernstein
Sam Bertolet and Helen Ziercher
Joan T. Bricetti
Stephen and Margaret Brunkhorst
Drs. Michael and Elizabeth Brunt
David and Debbie Caplin
Mr. John W. Carr and Ms. Kay Kaiser
Mr. and Mrs. Louis D. Cohen
Scott and Ameer Colvin
John and Carol Commerford
Mr. and Mrs. Charles J. Cook
Mike and Sue Darcy
Rita G. Diekemper
Dr. and Mrs. Carlos C. Daughaday
John and Mary Easley
Ryan C. Easley
Kimberly A. Ehrman
Elsperman Family
Mr.* and Mrs. John E. Evans, III
Sara and Darryl* Fabick
Mr. and Mrs. William F. Forsyth
Gerry E. Frankenfild
Bonnie Gibbs
Julie and Ron Gibbs
Mr. Mark and Dr. Caroline Gilje
Bruce and Kathryn Gordon
Mardell Moeller Granger
Paula E. and Michael L. Gross
Melinda and Doug Groves
Irene and Bob Gulovsen
Mr. and Mrs. Peter W. Gunther
David and Angie Hagee
Harvey and Judy Harris
Christine Henry
Dr. Cheryl R. Herman
Lois E. Himpel
Joseph and Bette Hirsch
Philo Holcomb
Janet Hyde
Dr. Gayle P. W. Jackson and Dr.* Frederick T. Kraus
Mrs. Stacey C. Kelley
Steve and Nancy Kidwell
Steven King
Dr. and Mrs. Michael Koebel
Mr. and Mrs. Alex Krupski
Anna and David Leavey
Judith Weiss Levy

Drs. Dan and Susan Luedke
Dr. Carl and Lynn Lyss
Nancy Williams and Matthew Mancini
Marylen Mann and Frank Jacobs
Kenneth R. Mares, PhD
Brenda K. Melson
Dr. Charles J. Metz
Anna M. Moll
Willard Moseley and LaVerne Riebold
Robert and Melissa* Mullgardt
Dr. Cora E. Musial
Dr. Melanie Newbill
Dr. Henry and Marcia Ollinger
Andrew S. Oster, MD
Adrienne Warren Patton
Mark and Susan Pfaff
Ruth W. Rangel
John and Susan Rava
Rodger and Paula Riney
Jane M. and Bruce P. Robert
John and Virginia Rowe
Lt. Colonel Kathy and Major James Runk
Mr. and Mrs. George B. Saunders
William and Marjorie Schuchat
Suzy Seldin
Alex Shapiro and Raymond Berger
Mr. Kenneth Simons
Dr. Raymond G. Slavin
Edward Smith and Sarah Duffy
Richard and Irene Sokol*
Lara Rachlin Steinel
Mr. and Mrs.* R. Charles Stevens
Tegner M. Stokes
Mr. and Mrs. Warren G. Sullivan
Mr. and Mrs. Richard S. Summers*
Mrs. Margie Talcoff
Bob Thompson
Dr. Sherida and Dr. Douglas Tollefsen
Mr. and Mrs. Fred K. Tompkins
Dr. Gary and Mrs. Phyllis Traub
John and Barbara Uhlemann
Dreanna and John Vallina
Mr. Russell Vanderbeek
Drs. John C. Vandover and Preeti Dalawari
Dr. John L. Visconti
Mr. and Mrs. James von der Heydt
Drs. B. Craig Weldon and Terri Monk
Connie Wepfer
Dr.* and Mrs. S. William Whitson
Mrs. Emily A. Williams*
Richard A. Wilt
Dr. and Mrs. Myles A. Yanta
Carl and Marjorie* Zimmerman

*Deceased
Gifts as of August 30, 2024.
Includes gifts over \$1000.

St. Louis Symphony Orchestra 144th Season, 2023/2024

Stéphane Denève
The Joseph and Emily Rauh Pulitzer Music Director

Kevin McBeth
Director of the St. Louis Symphony IN UNISON Chorus

Leonard Slatkin
Conductor Laureate

First Violins

David Halen
Concertmaster, Eloise and Oscar Johnson, Jr. Chair

Erin Schreiber
Associate Concertmaster, Louis D. Beaumont Chair

Celeste Golden Andrews
Second Associate Concertmaster

Hannah Ji
Assistant Concertmaster

*Justice Joseph H. and Maxine Goldenhersh Chair**

Ann Fink

Jessica Cheng Hellwege
Margaret B. Grigg Chair

Emily Ho

Joo Kim

Melody Lee

Xiaoxiao Qiang

Angie Smart
Mary and Oliver Langenberg Chair

Weilu Zhang

Jessie Chen**

Kyle Lombard**

Marin Osawa**

Second Violins

Alison Harney
Principal, Dr. Frederick Eno Woodruff Chair

Kristin Ahlstrom
Associate Principal, Virginia V. Weldon, M.D. Chair, Mabel Dorn Reeder Honorary Chair

Eva Kozma
Assistant Principal

Andrea Jarrett

Nicolae Bica

Janet Carpenter

Lisa Chong

Ling Ling Guan

Asako Kuboki

Seul Lee

Nathan Lowry

Shawn Weil

Siyu Zhang

Violas

Beth Guterman Chu
Principal, Ben H. and Katherine G. Wells Chair

Alejandro Valdepeñas
Associate Principal

Jonathan Chu
Assistant Principal

Michael Casimir

Andrew François

Susan Gordon

Chris Tantillo

Shannon Farrell Williams

Xi Zhang

Javier Otalora**

Davis Perez**

Cellos

Daniel Lee
Principal, Frank Y. and Katherine G. Gladney Chair

Melissa Brooks
Associate Principal, Ruth and Bernard Fischlowitz Chair

David Kim
Assistant Principal

Elizabeth Chung

James Czyzewski

Jennifer Humphreys

Alvin McCall

Bjorn Ranheim

Yin Xiong***

Double Basses

Underwritten in part by a generous gift from Dr. Jeanne and Rex Sinquefeld

Erik Harris
Principal, Henry Loew Chair

Aleck Belcher
Associate Principal

Brendan Fitzgerald
Assistant Principal

David DeRiso

Sarah Hogan Kaiser

Ronald Moberly

Flutes

Matthew Roitstein
Principal, Herbert C. and Estelle Claus Chair

Andrea Kaplan
Associate Principal

Jennifer Nitchman

Ann Choomack

Piccolo

Ann Choomack

Oboes

Jelena Dirks
Principal, Morton D. May Chair

Philip Ross
Associate Principal

Xiomara Mass

Cally Banham

English Horn

Cally Banham

Clarinets

Scott Andrews
Principal, Walter Susskind Chair

Diana Haskell***
Associate Principal, Wilfred and Ann Lee Konneker Chair

Tzuying Huang

Ryan Toher**

E-Flat Clarinet*

Ryan Toher**

Bass Clarinet

Tzuying Huang

Bassoons

Andrew Cuneo
Principal, Molly Sverdrup Chair

Andrew Gott
Associate Principal

Julia Paine

Contrabassoon*

Horns

Roger Kaza
Principal, W.L. Hadley and Phoebe P. Griffin Chair

Thomas Jöstlein
Associate Principal

Blaine Dodson

Tod Bowermaster

Julie Thayer

Victoria Knudtson

Trumpets

Steven Franklin
Principal, Symphony Volunteer Association Chair

*Associate Principal**

Michael Walk
David J. Hyslop Chair

Omri Barak**

Trombones

Jonathan Randazzo
Principal, Mr. and Mrs. William R. Orthwein, Jr. Chair

Amanda Stewart
Associate Principal

Jonathan Reycraft

Bass Trombone

Christopher Bassett**

Tuba

*Principal**
Lesley A. Waldheim Chair

Timpani

Shannon Wood
Principal, Symphony Volunteer Association Chair

Kevin Ritenauer
Associate Principal, Paul A. and Ann S. Lux Chair

Percussion

William James
Principal, St. Louis Post-Dispatch Foundation Chair

Alan Stewart
Associate Principal, Alyn and Marlyn Essman Chair

Kevin Ritenauer

Harp

Allegra Lilly***
Principal, Elizabeth Eliot Mallinckrodt Chair

Keyboard

Peter Henderson
Principal, Florence G. and Morton J. May Chair

Music Library

Katie Klich
Librarian

Henry Skolnick
Associate Librarian

Amanda Tallant
Assistant Librarian

*Chair vacant

**Replacement

***Leave of Absence

St. Louis Symphony Chorus 144th Season, 2023/2024

Leon Burke, III
Assistant Director
Gail Hintz
Manager and Accompanist

Timothy Anderson
Nicholas D. Bashaw
Annemarie Bethel-Pelton

Maureen Bierhals
Jerry Bolain
Joy Boland

William Borland
Michael Bouman
Richard F. Boyd

Robyn Brandon
Kyrstan Brantley
Daniel Brodsky

Elise Brubaker
Maya Bryant
Ashley E. Budde

Catherine A. Burge
Leon Burke, III
Rachel Buttram

Cherstin Byers
Leslie Caplan
Victoria Carmichael

Mark P. Cereghino

Rhonda Collins Coates
David Cox
Derek Dahlke

Kelly Daniel-Decker
Laurel Ellison Dantas
Mary C. Donald

Elizabeth Ducey-Moss
Jeil Mitchell Evans
Ladd Faszold

Alan Freed
Mark Freiman
Lea Luecking Frost

Amy Telford Garcés
Ousmane Gaye
Johnny Gillings

Megan E. Glass
Justino Gordón-LeChevalié
James Haessig

Susan H. Hagen
Carlea Halverson
Ja'Quis Hardin

Michelle Harry
Jonathan Heaney
Anthony Heinemann

Nancy J. Helmich
Ellen Henschen
Carole Hughes

Heather Humphrey
Matthew Jellinek
Kerry Jenkins

Janice Johnson
Preston Jordan
James Kalkbrenner

Margaret Milligan Kerr
Patricia Kofron
Elena Korpalski

Christina Kruger
Paul Kunnath
Patricia Lacoss-Arnold

Charles Lancaster
William Larson
Gina Malone

Patrick C. Mattia
Emese Mattingly
Charles McCall

Elizabeth McKinney
Scott Meidroth
Haley Miller

Elizabeth-Lee E. Musch
Emily Mae Nelson
Hannah Nelson

Megan Nguyen
Duane L. Olson
Nadiana Ortiz

Matt Pentecost

Brian Pezza
David Pierce
Sarah Price

Amy Prince
Shelly Ragan
Kate Randazzo

Grace Reberg
Robert Reed
Valerie Christy Reichert

Kate Reimann
Greg Riddle
Joy E. Rikli

Alex Roesler
Greta Rosenstock
Terree Rowbottom

Nathan Tulloch Ruggles
Paul N. Runion
Mark Saunders

Mark V. Scharff
Leann Schuering
Victoria Siddell

Charles G. Smith
Matthew Stansfield
Adam Stefo

David Stephens
James Stevens
Sean Stewart

Alyssa Strauss
Laura Swearingen
Heather Butler Taylor

Nora Justak Teipen
Stephanie Tennill
Natanja Tomich

Philip Touchette
Cortney Towns
Pamela M. Triplett

David R. Truman
Greg Upchurch
Robert Valentine

Kaamya Varagur
Samantha Wagner
Nancy Maxwell Walther

Diane Watson
Nicole Weiss
Lacy Wilder

Kat Wilkinson
Paula N. Wohldmann
Tristan Wood

Susan Donahue Yates
Danielle Yilmaz
Carl Scott Zimmermann

Diane Smoot
Charles Stancil
Bridget Stegall

Wynton Stuart
Tamaja Tally
Karen Thomas-Stuart

Sharon Thurman
Beverly Versey-Smith
Kwamina Walker-Williams

Kelly Ward
Gracie Ward
Diana West

Michele Sue Williams
Hannah Wozniak

** Charter Member
^ Young Artist

St. Louis Symphony IN UNISON Chorus

Kevin McBeth
Director

Beth Enloe Fritz
Assistant Director

Joseph Welch
Accompanist

Michelle Byrd
Manager

Tiffany Alexander
Steven Allen Jr.

Armando Asebedo
Glenda Bastain
Tom Baynham

Robert Beckles
Alison Bell
Angelic Berry

De-Rance Blaylock
Pamela Bolden
Candice Boyd

Valencia Branch
Patricia Brown

Denise Brunson-Harris
Michelle Byrd
Rochelle Calhoun

Dillon Carl^
Beverly Charisse**
Jaylen Davis

Reginald Davis
Linda Davner**
Janet Davis

Charita Dones
Elaine Dowdle
Carole Dula-Bell

Lisha Ellis
Beth Enloe Fritz
Alayna Epps^

Bekah Ford^
Maggie Gann
Ousmane Gaye

Ruth Gilliam**
Johnny Gillings Jr.
Elsa Gordon-Whitfield

Gregory Green
Deborah Grupe
Leslie Hanlin

Ja'Quis Hardin^
Carol Henley
Natalie Hill

Veda Hill
Lawrence Hudson-Lewis
Carole Hughes**

Don Hutcherson
Kristin Jacobs
Tammy Jennings

Alexandar Johnson^
Lisa Johnson
Stanley Johnson

Barrie Jones**
Carmen Jones
Tericida Jones**

Jennifer Kelley
Jacob Krznar
Brenda Lane

Julie Lynch
Nadia Maddex^
Tiffany McClenton

Vickie Minter
Mary Moorehead
Harry Moppins Jr.

Cathie Muschany
Tai Oney
Diane J. Peal**

Harry A. Penelton III
Eric Pitts
Althelia Powell-Thomas**

Anthony Randle
Adrian Rice
Veronica Rice^

Kathleen Schroeder
Ta'janette Sconyers
Christopher Scott

Austin Shariff^
Teresia A. Simmons
Denise Sleet

Diane Smoot
Charles Stancil
Bridget Stegall

Wynton Stuart
Tamaja Tally
Karen Thomas-Stuart

Sharon Thurman
Beverly Versey-Smith
Kwamina Walker-Williams

Kelly Ward
Gracie Ward
Diana West

Michele Sue Williams
Hannah Wozniak

** Charter Member
^ Young Artist

St. Louis Symphony Youth Orchestra 144th Season, 2023/2024

First Violins

Ayman Amerin
Co-Concertmaster

Micaela Chyu
Co-Concertmaster

Sophia Heaton
Assistant Concertmaster

Angel Ahn

Anya Akhmadullina

Isabella Davis

Klaus Jöstlein

Grace Li

Charles McGrath

Kaya McNurlen

Aiden Moon

Katherine Nguyen

Samuel Wenger-Stickel

Yiding (Adam) Ye

Second Violins

Eric Chen
Co-Principal

Asher Koh
Co-Principal

Hayden Baker
Assistant Principal

Zoe Baldwin

Yosef Granillo

Elsa Heaton

Brandon Hu

Y. Elizabeth Hung

G. Schmiedeke

Gregory Shao

Alexander Tung

Essence Williams

Eric Chang
Alternate

Joshua De Lay
Alternate

Sophie Hughes
Alternate

Journey Mohn
Alternate

Sarah Mu
Alternate

Charis Shing
Alternate

Wayne Yue
Alternate

Violas

Delia Zacks
Co-Principal

Ava O'Bryan
Co-Principal

Tarini Karnati

Ethan Liu

Michelle Lu

Mallory Mihm

Hannah Moon

Joy Shin

Lillian Smith

Jessica Wheatley

Macey Heimburger
Alternate

Victor Humphrey
Alternate

Aaron Wolz
Alternate

Cellos

Rachel Li
Co-Principal

Justin Wright
Co-Principal

Taochi Margaret Leung
Assistant Principal

Tyler He

Hannah Mathew

Alexander Roesler

Steven Shaw

Andrew Su

Brody Van Wave

Ellie Chen
Alternate

Abby Deeter
Alternate

Noah Lipe
Alternate

Double Basses

W. Gabriel Gibert
Co-Principal

Erik Oswald
Co-Principal

Eric Mao

Keegan Marshall

Timothy McLaughlin-Heil

Magdalyn Thomas

Flutes

Sarah Liao

Madison Morse

Tina Wang

Rachel Chung
Alternate

Haley Parks
Alternate

Oboes

Alice Liu

Ivy Wang

Macey Hood
Alternate

Matthew Awad
Alternate

Clarinets

Samuel Caudell

Matthew Kim

Jayden Liu

Kate Mueller
Alternate

Luan Nguyen
Alternate

Bass Clarinets

Chris Taylor

Riley Cannon
Alternate

Bassoons

Alex Chen

Elizabeth Myers

Charles Randall

Sutherland Allen
Alternate

Horns

Hannah Almos

Gavin John

Thomas McGrath

Shiloh Roash

Sean Roche

Ezekiel Laesch
Alternate

Trumpets

Ariana Coan

Chris Hopwood

Carson Smejkal

Trombones

Daniel Kent

Ezra Leslie

Julian Mitchell

Althea Althausser
Alternate

Breanna Mayberry
Alternate

Bass Trombones

Joseph Viviano

Tuba

Zach Hardee

Percussion

Lucas Brown

Norah Murphy

Luke Nowak

Lily Cooper
Alternate

Amelia Drake
Alternate

Harps

Greta Hodes

Amelia Schwartz
Alternate

Keyboard Instruments

James Decker

Bethany Lai
Alternate

Administration

Executive

Marie-Hélène Bernard
President and Chief Executive Officer

Jessica Bailey
Executive Assistant

Matthew Stansfield
Chief of Staff

Artistic and Operations

Paul Pietrowski
Chief Operating Officer

Chris Aman
Artistic Operations Assistant

Margaret Bailey
Senior Director of Production and Operations

Ron Bolte, Jr.
Assistant Stage Manager (Sound)

Eliza Caperton
Artistic Coordinator

Nigel DeLuca
Assistant Stage Manager (Lighting)

Gail Hintz
Symphony Chorus Manager

Franklin Horvath
Stage Manager

Ian Kivler
Director of Artistic Planning

Audrey Kwong
Director of Orchestra Operations

Kyle Pyke
Audio Recording Engineer

Adam Sheppard
Stagehand

Alana Szeles
Production Manager

Andrew Williams
Interim Director of Orchestral Personnel

Education and Community Partnerships

Maureen Byrne
Vice President, Education and Community Programs

Michelle Byrd
Manager, IN UNISON Programs

Alayna Epps
IN UNISON Arts Administration Fellow

Joseph Hendricks
Peer to Peer Leader

Jessica Ingraham
Senior Director of Education

Tai Oney
Manager, Inclusion & Learning

Laura Reinert
Education Programs Administrator

Sarah Ruddy
Education Programs Manager

Samantha Sachtleben
Youth Orchestra Manager

Marketing, Communications, and Audience Experience

Unitey Kull
Chief Marketing and Communications Officer

Aliyah Blackburn
Creative Services Manager

Bryan Brake
Box Office Manager

Lesley Chaney
Marketing Analyst

Eric Dundon
Public Relations Director

Troy Gährs
Ticket Programs Manager

Daniel Glen
Director of Creative Services

Justino Gordón-LeChevalié
Communications & Publications Coordinator

Zachary Johnson
Director of Hospitality and Audience Experience

Allison Lambacher
Associate Director of Digital Engagement

Samantha Lyons
Project Manager & Editor

Ida McCall
Content Director

Hannah Reffett
Manager of Marketing and Audience Development

Susan Roberts
Manager of Group Sales and Partnerships

Adam Stefo
Associate Director of Box Office and Preferred Services

Danielle Stewart
Director of Marketing and Audience Development

Leanne Telger
Digital Marketing Coordinator

Philanthropy

Alex Shapiro
Chief Philanthropy Officer

Summer Baer
Philanthropy Coordinator

Mary Balmer
Associate, Philanthropy

Lexi Becker
Manager, Grants

Andrea Biske
Manager, Volunteer Programs

Anne Marie Block
Coordinator, Philanthropy Operations

Rochelle Calhoun
Manager, Corporate Partnerships

Annie Daum
Philanthropy Database Manager

Joe Drexelius
Director, Individual Philanthropy/Annual Fund

Laura Dwyer
Manager, Volunteer Programs

Erin Estopare
Senior Director, Major Gifts and Planned Giving

Julie Gibbons
Manager, Events and Stewardship

Richard Kranes-Rutz
Associate Vice President, Philanthropy

Kristin Lamprecht
Senior Director, Campaign and Stewardship

Danielle Madrid
Senior Director, Institutional Philanthropy

Jaclyn Stewart-Strothmann
Senior Director, Major Gifts and Planned Giving

Elaine Wichmer
Director, Major Gifts and Planned Giving

Finance and Administration

Steven Rosenzweig
Chief Financial Officer

Jay Accola
Assistant Controller

Sarah Anderson
Hiring Coordinator

Mitch AuBuchon
Network Support Technician

Joel Bischoff
Maintenance Technician

Leon Chiang
Financial Planning Analyst

Heather Collins
Payroll and Accounting Associate

Allison Friedman
Human Resources Director

Jeff Jaeger
Controller

Sara Koehler
Human Resources and Benefits Specialist

Bob Olimpio
Director of Information Technology

Tina Polette
Accounts Payable Manager

Cynthia Schon
Director of Facilities

Katie Sheldon
Database/CRM Specialist

Consultants

John Easley
Campaign Consultant

Anna Kuwabara
Powell Hall Project Relocation Consultant

Anna Leavey
Project Manager, Powell Hall

Mary Ann Makee
Hospitality Consultant

Nikki Scandalios
Communications Consultant

Christopher Stark
Curator, Live at the Pulitzer



s|so

**St. Louis Symphony
Orchestra**

Stéphane Denève : Music Director

“The SLSO replenishes my soul,
just magnificent.

– SLSO patron

314-533-2500 | slo.org