



ST. LOUIS  
SYMPHONY  
ORCHESTRA

STÉPHANE DENÈVE, MUSIC DIRECTOR

ALL  
TOGETHER  
NOW

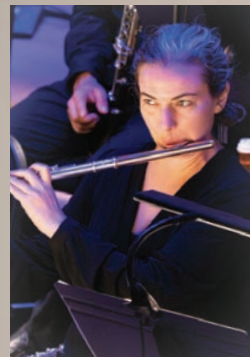
26  
/ 27

147th Season

Group Guide

“Music is the shortest path  
from one heart to another.”

—Stéphane Denève, Music Director



Whether you're planning a corporate event, school trip, or social gathering, SLSO group packages make it easy to enjoy amazing music together in a spectacular venue.

Groups of ten or more receive savings of up to 20%, plus no ticket fees, tailored seating options, and personalized support.

We'll help you design an event that puts your group at the heart of it all.

# YOUR GROUP. YOUR CONCERT.

With daytime and evening concerts and an array of genres and experiences, there's an SLSO concert for every group. We'll help you find the perfect fit.

## Friday Morning Concerts

Ideal for school groups, senior centers, and leisure travel groups, Friday morning classical concerts feature heart-stirring music by the SLSO and celebrated guest artists.

## Lunch and Learns

School groups are invited to book an immersive classical concert experience, featuring Teacher Guides, Pre-Concert Conversations, and lunches with musician Q&As.

## Sunday Afternoon Concerts

Sunday matinees offer a blend of elegance and ease for travel itineraries, senior groups, and anyone wanting to elevate a special group outing.

## Group Subscriptions

Does your group attend the symphony throughout the season? A Compose Your Own subscription of any 6+ concerts gives you even more savings and lets you design a package just right for you.

## Happy Hour Concerts

Designed to get the conversation going, Playlist: Symphony Happy Hour concerts welcome young professionals, corporate groups, and anyone looking for fresh and fun takes on classical music.

## Coming Soon

New concerts are added all season. Look forward to more Specials, chamber music, Concerts for Kids, and Powell Hall Presents—a new series featuring a variety of musical acts.



# HOLIDAY CONCERTS

Make plans now to host your group's winter celebration with us as the SLSO performs the soundtrack to the holidays.



## IN UNISON Christmas

Dec 10–11

Thu 7:30pm  
Fri 7:30pm

Kevin McBeth, conductor  
Jenifer Lewis, vocals  
St. Louis Symphony IN UNISON Chorus

Supported by Bayer Fund

## Mercy Holiday Celebration

Dec 17–20

Thu 7:30pm  
Fri 10:30am  
Fri 7:30pm  
Sat 2:00pm  
Sat 7:30pm  
Sun 2:00pm

Erin Freeman, conductor  
St. Louis Symphony Chorus

Presented by Mercy+

## Ana Gasteyer's Sugar & Booze Holiday Spectacular

Dec 22

Tue 7:30pm

Ana Gasteyer, vocals

## New Year's Eve Celebration

Dec 31

Thu 7:30pm

Samuel Hollister, conductor

# SPECIALS

Your group can look forward to extraordinary musical experiences where genres meet, artists collaborate, and the SLSO's artistry shines.

## A Salute to America featuring the US Naval Academy Glee Club

Nov 20–21

Fri 7:30pm  
Sat 7:30pm

John Morris Russell, conductor

## Lift Every Voice Black History Month Celebration

Feb 19

Fri 7:30pm

Kevin McBeth, conductor; Isaac Cates, vocals  
St. Louis Symphony IN UNISON Chorus

Supported by Bayer Fund

## Powell Hall Presents Jazz at Lincoln Center Orchestra with Wynton Marsalis

Mar 10

Wed 7:30pm

Jazz at Lincoln Center Orchestra  
Wynton Marsalis, trumpet and artistic director

The SLSO does not perform at this concert.



Jazz at Lincoln Center Orchestra

# FILMS WITH LIVE ORCHESTRA

Treat your group to their favorite films and characters on the big screen as the SLSO performs iconic scores live.



## Harry Potter and the Chamber of Secrets™ in Concert

Sep 18–20

Fri 7:00pm  
Sat 7:00pm  
Sun 2:00pm

John Williams *Harry Potter and the Chamber of Secrets*

## Edward Scissorhands in Concert

Oct 23–25

Fri 7:00pm  
Sat 7:00pm  
Sun 2:00pm

Danny Elfman *Edward Scissorhands*

## The Muppet Christmas Carol in Concert

Dec 12–13

Sat 7:00pm  
Sun 2:00pm  
Sun 7:00pm

Miles Goodman  
*The Muppet Christmas Carol*

## One Piece in Concert Jan 2–3

Kohei Tanaka  
*One Piece Music Symphony*

Sat 7:00pm  
Sun 2:00pm

## Hook in Concert

Jan 22–24

Samuel Hollister, conductor  
John Williams *Hook*

Fri 7:00pm  
Sat 2:00pm  
Sun 2:00pm

## Star Wars: A New Hope in Concert

Mar 5–7

John Williams *Star Wars: A New Hope*

Fri 7:00pm  
Sat 7:00pm  
Sun 2:00pm

## National Geographic Secrets of the Whales in Concert

Apr 23–24

Raphaëlle Thibaut *Secrets of the Whales*

Fri 10:30am  
Fri 7:00pm  
Sat 2:00pm

HARRY POTTER All characters and elements © & ™ Warner Bros. Entertainment Inc. Publishing Rights © JKR. EDWARD SCISSORHANDS, THE MUPPET CHRISTMAS CAROL, STAR WARS, and SECRETS OF THE WHALES presentations licensed by Disney Concerts © All rights reserved. ONE PIECE © Eiichiro Oda / Shueisha, Toei Animation HOOK © 2026 Sony Music Entertainment. All Rights Reserved.

# CLASSICAL CONCERTS

Experience the magic of composers both familiar and new, whose music expresses a stunning array of human emotion.

## SEPTEMBER

### Opening Weekend Italian Splendor

Sep 26–27

Sat 7:30pm  
Sun 3:00pm

Stéphane Denève, conductor  
Yefim Bronfman, piano

Hector Berlioz *Roman Carnival Overture*  
Franz Liszt Piano Concerto No. 2  
Andrea Tarrodi *Liguria*  
Ottorino Respighi *Pines of Rome*

### Mozart and Schumann Scenes from the Rhine

Oct 16–17

Fri 10:30am  
Sat 7:30pm

Kristiina Poska, conductor  
Marie-Ange Nguci, piano

Ülo Krigul *Proteus Pulse* (US premiere)  
W. A. Mozart Piano Concerto No. 21  
Robert Schumann Symphony No. 3, “Rhenish”

### Playlist Beethoven's Sixth

Oct 28

Wed 6:30pm

Stéphane Denève, conductor

Presented by the William T. Kemper Foundation



Stéphane Denève

### Beethoven's Pastoral Reflections of Home

Oct 30–31

Fri 10:30am  
Sat 7:30pm

Stéphane Denève, conductor  
Julia Bullock, soprano

George Walker *Folksongs for Orchestra*  
Samuel Barber *Knoxville: Summer of 1915*  
Ludwig van Beethoven Symphony No. 6, “Pastoral”

Presented by the Whitaker Foundation



Julia Bullock

## OCTOBER

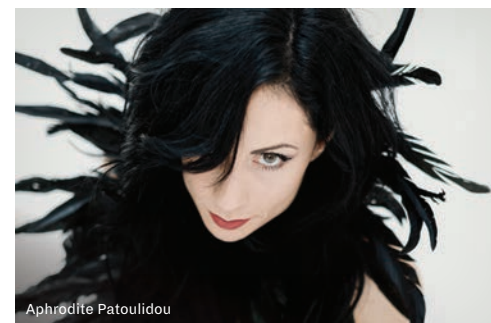
### Debussy's La Mer Stories in Sound

Oct 2 & 4

Fri 7:30pm  
Sun 3:00pm

Dalia Stasevska, conductor  
Aphrodite Patoulidou, soprano and nyckelharpa

Anna Meredith *Nautilus*  
Jean Sibelius *Scene with Cranes*  
Luciano Berio *Folk Songs*  
Aphrodite Patoulidou *Improvisation*  
Jean Sibelius *Luonnotar*  
Claude Debussy *La Mer*



Aphrodite Patoulidou

## NOVEMBER

### Rachmaninoff and Tchaikovsky Passion and Fate

Nov 6–8

Fri 7:30pm  
Sat 7:30pm  
Sun 3:00pm

Stéphane Denève, conductor  
Daniil Trifonov, piano

Michael Tilson Thomas *Agnegram*  
Sergei Rachmaninoff Piano Concerto No. 1  
Pyotr Ilyich Tchaikovsky Symphony No. 6

“One of the world’s greatest symphony orchestras.”

— Forbes

## Shostakovich's Eighth Beauty in Darkness

Nov 14–15

Sat 7:30pm  
Sun 3:00pm

David Afkham, conductor  
St. Louis Symphony Chorus; Erin Freeman, director

Felix Mendelssohn *Psalm 114*  
(When Israel out of Egypt Came)  
Igor Stravinsky *Symphony of Psalms*  
Dmitri Shostakovich *Symphony No. 8*

## Pictures at an Exhibition A Lyrical Tour

Nov 28–29

Sat 7:30pm  
Sun 3:00pm

John Storgårds, conductor; Himari, violin

Sergei Rachmaninoff *Isle of the Dead*  
Alexander Glazunov *Violin Concerto*  
Modest Mussorgsky/orch. Maurice Ravel  
*Pictures at an Exhibition*



Himari

# DECEMBER

## Dvořák's Eighth Bohemian Dreams

Dec 4–5

Fri 10:30am  
Sat 7:30pm

Dinis Sousa, conductor  
Jeremy Denk, piano

Kajia Saariaho *Lumière et Pesanteur* (Light and Gravity)  
Béla Bartók *Piano Concerto No. 2*  
Antonin Dvořák *Symphony No. 8*

# JANUARY

## Brahms' Third Fierce Longing

Jan 8–10

Fri 10:30am  
Sat 7:30pm  
Sun 3:00pm

Stéphane Denève, conductor  
James Ehnes, violin

Detlev Glanert *Vexierbild*. (Hidden Image.)  
(SLSO co-commission)  
Max Bruch *Violin Concerto No. 1*  
Johannes Brahms *Symphony No. 3*



Stéphane Denève and James Ehnes

## Rachmaninoff's Symphonic Dances Living Portraits

Jan 16–17

Sat 7:30pm  
Sun 3:00pm

Paolo Bortolameolli, conductor; Charles Yang, violin

Miguel Farias *Retratos Australes* (Southern Portraits)  
Kris Bowers *For A Younger Self* (Violin Concerto)  
Sergei Rachmaninoff *Symphonic Dances*

Presented by the Whitaker Foundation



Charles Yang

## Playlist Pictures at an Exhibition

Jan 20

Wed 6:30pm

Samuel Hollister, conductor

Presented by the William T. Kemper Foundation

## Salomé and Elektra Legendary Women

Jan 29–30

Fri 10:30am  
Sat 7:30pm

Anja Bihlmaier, conductor  
Yeol Eum Son, piano

Mel Bonis *Salomé* from *Trois femmes de légende*  
Ludwig van Beethoven *Piano Concerto No. 1*  
Richard Strauss/arr. Manfred Honeck & Tomás Illé  
*Elektra* *Symphonic Suite*

# FEBRUARY

## Prokofiev and Connesson Myth and Mischief

Feb 6–7

Sat 7:30pm  
Sun 3:00pm

Stéphane Denève, conductor; Johannes Moser, cello

Camille Saint-Saëns *Danse macabre*  
Guillaume Connesson *Cello Concerto*  
Sergei Prokofiev *Selections from Waltz Suite*  
Sergei Prokofiev *Scythian Suite*

## Ravel and Poulenc Charm and Wonder

Feb 12–13

Fri 7:30pm  
Sat 7:30pm

Stéphane Denève, conductor  
Isabel Leonard, mezzo-soprano  
St. Louis Symphony Chorus; Erin Freeman, director  
St. Louis Children's Choirs  
Dr. Alyson Moore, artistic director

Francis Poulenc *Gloria*  
Maurice Ravel *L'enfant et les sortilèges*  
(The Child and the Spells)

## Bruckner's Fourth The Romantic

Feb 26–27

Fri 10:30am  
Sat 7:30pm

David Danzmayr, conductor  
Andrew Cuneo, bassoon

Kevin Puts *Bassoon Concerto* (SLSO co-commission)  
Anton Bruckner *Symphony No. 4*

# MARCH

## Marsalis' Fifth A Jazz Symphony

Mar 12–14

Fri 7:30pm  
Sat 7:30pm  
Sun 3:00pm

Teddy Abrams, conductor  
Jazz at Lincoln Center Orchestra

Aaron Copland *Our Town*  
John Adams *Frenzy: a short symphony*  
Wynton Marsalis *Symphony No. 5, "Liberty"*  
(SLSO co-commission)



Wynton Marsalis

## Haydn and Ortiz Resistance and Revolution

Mar 20–21

Sat 7:30pm  
Sun 3:00pm

Carlos Miguel Prieto, conductor  
St. Louis Symphony Chorus  
Erin Freeman, director

Gabriela Ortiz *Revolución diamantina* (Glitter Revolution)  
Joseph Haydn *Missa in Angustiis* (Mass for Troubled Times)

# APRIL

## Shostakovich and Sibelius Power and Drama

Apr 3–4

Sat 7:30pm  
Sun 3:00pm

Stéphane Denève, conductor  
Nikolaj Szeps-Znaider, violin

Jean Sibelius *Violin Concerto*  
Dmitri Shostakovich *Symphony No. 10*

## Bernstein and Copland American Rhapsody

Apr 9–11

Fri 10:30am  
Sat 7:30pm  
Sun 3:00pm

Stéphane Denève, conductor  
Scott Andrews, clarinet; Erin Schreiber, violin

Carlos Simon "Wake Up!" *Concerto for Orchestra*  
Aaron Copland *Clarinet Concerto*  
Christopher Stark *Violin Concerto "Vesper Flights"*  
(World Premiere/SLSO commission)  
Leonard Bernstein *Symphonic Dances*  
from *West Side Story*

Presented by the Whitaker Foundation

## Brahms and Vaughan Williams Tenderness and Turmoil

Apr 16 & 18

Fri 7:30pm  
Sun 3:00pm

Leonard Slatkin, conductor; Olga Kern, piano

Ralph Vaughan Williams *Fantasia on Greensleeves*  
Ralph Vaughan Williams *Symphony No. 6*  
Johannes Brahms *Piano Concerto No. 1*

## Playlist Debussy's La Mer

Apr 21

Wed 6:30pm

Samuel Hollister, conductor

Presented by the William T. Kemper Foundation

## Bartók and Kodály Mosaics in Motion

Apr 30–May 1

Fri 10:30am  
Sat 7:30pm

Domingo Hindoyan, conductor  
Pacho Flores, trumpet

Zoltán Kodály *Dances of Galánta*  
Roberto Sierra *Salseando*  
Béla Bartók *Concerto for Orchestra*



Domingo Hindoyan

# MAY

## Mahler's Third The World in Symphony

May 7 & 9

Fri 7:30pm  
Sun 3:00pm

Stéphane Denève, conductor  
Tamara Mumford, mezzo-soprano  
Women of the St. Louis Symphony Chorus

Erin Freeman, director  
St. Louis Children's Choirs  
Dr. Alyson Moore, artistic director

Gustav Mahler *Symphony No. 3*



St. Louis Symphony Chorus

Coffee Concert

**“A concert hall  
worth a fanfare.”**

— *The New York Times*

**To purchase tickets,  
contact Susan Roberts**

**Manager, Groups Sales and  
Partnerships**

**314-286-4155 or [groups@slo.org](mailto:groups@slo.org)**

A group sales professional with more than 20 years of experience, Susan looks forward to working with you to create meaningful events tailored to your group's needs.



Seat maps, parking,  
shuttles & more  
[slo.org/groups](https://slo.org/groups)

## GROUP BENEFITS

### Discounts

Save up to 20% off single ticket prices.

### Personalized Service

Includes seat selection, concert suggestions, and dining and parking recommendations.

### Priority Seating

Early-bird access to the best seating availability. Reservations can be held for up to 30 days without payments, allowing time to promote your event and gather responses.

### Student Rates

Student tickets as low as \$15 for orchestral performances and up to 20% off for special events.

### No Ticketing Fees

Groups save even more. Some special program fees may apply.

### Complimentary Tickets

Provided for chaperones and tour operators based on group category, number of purchased tickets, and availability.

## ENHANCE YOUR EXPERIENCE

Give your group a truly unforgettable experience with the SLSO's wide range of add-ons, including:

- Behind-the-scenes building tours for select performances
- Gatherings in grand reception spaces
- Engaging conversations with the SLSO's talented musicians
- Catered or boxed meals

### Share the Power of Music

Community support is vital to ensuring the SLSO's artistic excellence, innovation, and community engagement. Share your love of the orchestra as a corporate or individual donor and enjoy benefits designed to deepen your knowledge and engagement with the SLSO. Learn more at [slo.org/support](https://slo.org/support).



**ST. LOUIS  
SYMPHONY  
ORCHESTRA**

STÉPHANE DENÈVE, MUSIC DIRECTOR

718 N. Grand Blvd.  
St. Louis, MO 63103

Non Profit  
US Postage  
**PAID**  
SLSO



26 / 27

147th Season

**Book your  
group today.**

**Groups save up to 20%**



[slo.org/groups](https://slo.org/groups)  
**314-286-4155**

Groups save! [groups@slo.org](mailto:groups@slo.org)